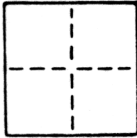


CORNER RECORD

COUNTY OF SACRAMENTO T. _____ R. _____ MERIDIAN _____ CALIFORNIA

CORNER TYPE: GOV'T. CORNER MEANDER RANCHO CONTROL OTHER

CORNER IDENTIFICATION — DATE OF VISIT AUGUST, 1986



S.W., N.W. & N.E. CORNERS OF LOT 24,
SOUTH CURTIS OAKS SUBDIVISION NO. 3
BOOK 18 OF MAPS, MAP NO. 64

CORNER — LEFT AS FOUND FOUND AND TAGGED REESTABLISHED OBLITERATED CORNER REBUILT

PHYSICAL DESCRIPTION OF CORNER FOUND; EVIDENCE AND METHOD USED TO IDENTIFY OR REESTABLISH

CORNERS REESTABLISHED PER PLAT OF
SOUTH CURTIS OAKS SUBDIVISION NO. 3

PHYSICAL DESCRIPTION OF MONUMENTS REBUILT OR PERPETUATED

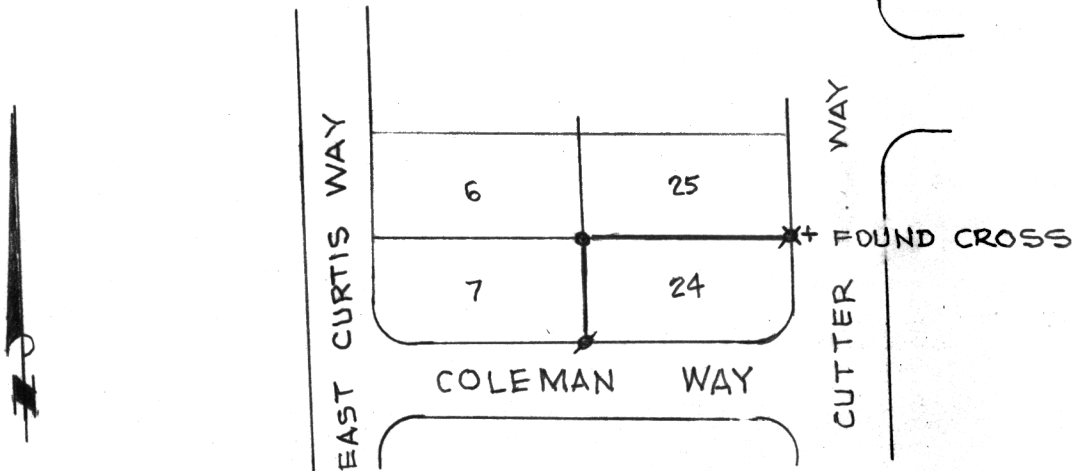
SEE SKETCH

CALIFORNIA COORDINATE SYSTEM ORDER: FIRST SECOND THIRD

STATIONS USED: NGS (USC & GS) STATE COUNTY OTHER STATION _____ STATION _____

ZONE _____ ELEVATION _____ NORTHINGS (Y) _____ EASTINGS (X) _____

SKETCH: (Include reference tie or witness points, remarks and topo of area)



- ✕ SET 5/8" REBAR TAGGED LS 2457
- SET LEAD PLUG & TAG STAMPED LS 2457
- SET 1/4" O.D. IRON PIPE TAGGED LS 2457



SURVEYOR'S CERTIFICATE

THIS CORNER RECORD WAS PREPARED BY ME OR UNDER MY DIRECTION IN CONFORMANCE WITH THE LAND SURVEYORS ACT

SEPTEMBER 19 1986

SIGNED: Timothy S. Train

L.S. or R.C.E. No.: LS 2457

COUNTY SURVEYOR'S CERTIFICATE

THE CORNER RECORD WAS RECEIVED NOV 25, 1986

AND EXAMINED AND FILED DEC 15, 1986

BY: D Parker

TITLE: Supervising Eng Tech

DOCUMENT No. 99

STATEMENT ON BACK OF SHEET YES NO