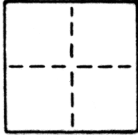


CORNER RECORD

COUNTY OF SACRAMENTO T. _____ R. _____ MERIDIAN CALIFORNIA
 CORNER TYPE: GOV'T. CORNER MEANDER RANCHO CONTROL OTHER
 CORNER IDENTIFICATION — DATE OF VISIT JUNE 1986



N.W. & S.W. CORNERS OF LOT 74
 SOUTH CURTIS OAKS SUBDIVISION NO. 2
 BOOK 17 OF MAPS, MAP NO. 3

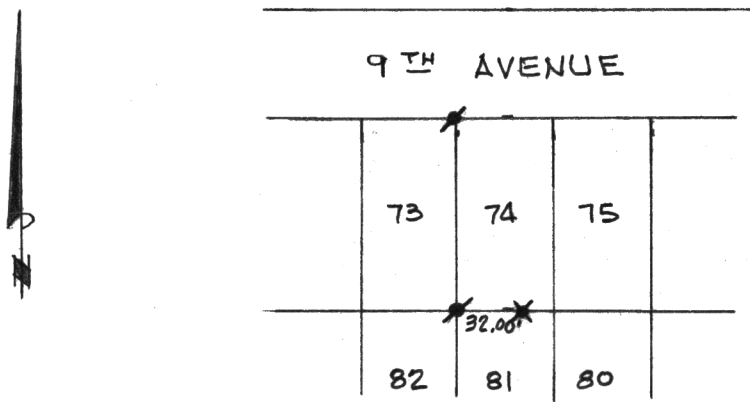
CORNER — LEFT AS FOUND FOUND AND TAGGED REESTABLISHED OBLITERATED CORNER REBUILT
 PHYSICAL DESCRIPTION OF CORNER FOUND; EVIDENCE AND METHOD USED TO IDENTIFY OR REESTABLISH

CORNERS ESTABLISHED PER PLAT OF SOUTH
 CURTIS OAKS SUBDIVISION NO. 2

PHYSICAL DESCRIPTION OF MONUMENTS REBUILT OR PERPETUATED
 SEE SKETCH

CALIFORNIA COORDINATE SYSTEM ORDER: FIRST SECOND THIRD
 STATIONS USED: NGS (USC & GS) STATE COUNTY OTHER STATION _____ STATION _____
 ZONE _____ ELEVATION _____ NORTHINGS (Y) _____ EASTINGS (X) _____

SKETCH: (Include reference tie or witness point:, remarks and topo of area)



★ SET 1/4" O.D. IRON PIPE TAGGED LS 2457
 ★ SET 5/8" REBAR NOT TAGGED, WITNESS POINT.



SURVEYOR'S CERTIFICATE
 THIS CORNER RECORD WAS PREPARED BY ME OR UNDER MY
 DIRECTION IN CONFORMANCE WITH THE LAND SURVEYORS ACT
 ON SEPTEMBER 23 1986
 SIGNED: Timothy S. Trahan
 L.S. or R.C.E. No.: LS 2457

COUNTY SURVEYOR'S CERTIFICATE
 THE CORNER RECORD WAS RECEIVED NOV 25 1986
 AND EXAMINED AND FILED DEC 19 1986
 BY: D. PARKER
 TITLE: SUPERVISING ENG. TECH
 DOCUMENT No. 98
 STATEMENT ON BACK OF SHEET YES NO