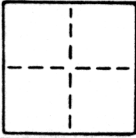


CORNER RECORD

COUNTY OF SACRAMENTO T. _____ R. _____ MERIDIAN CALIFORNIA

CORNER TYPE: GOV'T. CORNER MEANDER RANCHO CONTROL OTHER

CORNER IDENTIFICATION - DATE OF VISIT AUGUST 1986



N.W. & S.W. CORNERS OF LOT 60 & S.E. CORNER LOT 61
RIO PARK
BOOK 25 OF MAPS, MAP NO. 11

CORNER - LEFT AS FOUND FOUND AND TAGGED REESTABLISHED OBLITERATED CORNER REBUILT

PHYSICAL DESCRIPTION OF CORNER FOUND; EVIDENCE AND METHOD USED TO IDENTIFY OR REESTABLISH

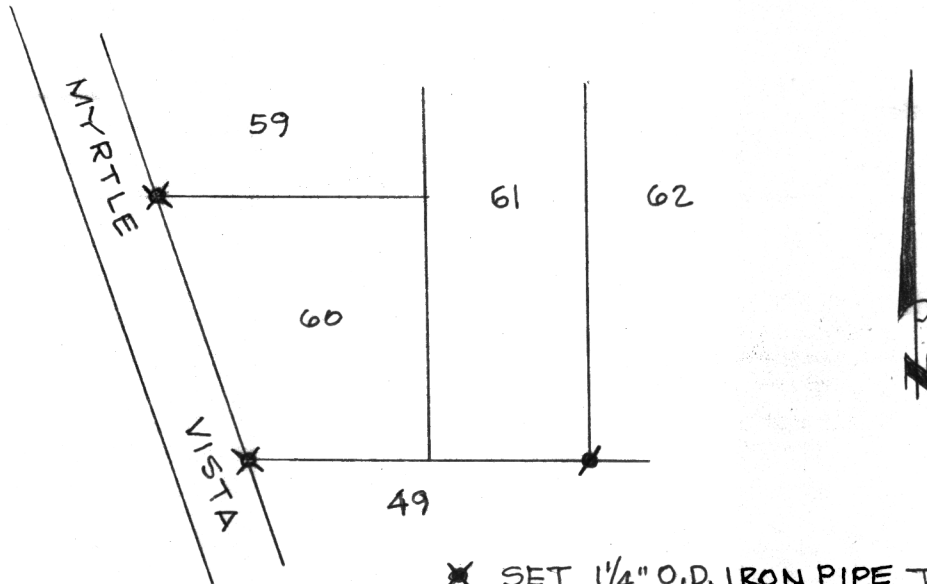
CORNERS REESTABLISHED PER PLAT OF RIO PARK

PHYSICAL DESCRIPTION OF MONUMENTS REBUILT OR PERPETUATED

SEE SKETCH

CALIFORNIA COORDINATE SYSTEM ORDER: FIRST SECOND THIRD
 STATIONS USED: NGS (USC & GS) STATE COUNTY OTHER STATION _____ STATION _____
 ZONE _____ ELEVATION _____ NORTHINGS (Y) _____ EASTINGS (X) _____

SKETCH: (Include reference tie or witness points, remarks and topo of area)



- ✱ SET 1/4" O.D. IRON PIPE TAGGED LS 2457
- ✱ SET 5/8" REBAR TAGGED LS 2457



SURVEYOR'S CERTIFICATE
 THIS CORNER RECORD WAS PREPARED BY ME OR UNDER MY DIRECTION IN CONFORMANCE WITH THE LAND SURVEYORS ACT ON SEPTEMBER 19 1986
 SIGNED: Timothy S. Trautman
 L.S. or R.C.E. No.: LS 2457

COUNTY SURVEYOR'S CERTIFICATE
 THE CORNER RECORD WAS RECEIVED NOV. 25 1986
 AND EXAMINED AND FILED DEC 19 1986
 BY: D. PARKER
 TITLE: SUPERVISING ENG. TBCA

DOCUMENT No. 96

STATEMENT ON BACK OF SHEET

YES NO

SEAL