

# CORNER RECORD

Document Number

959

City of \_\_\_\_\_ County of SACRAMENTO, California

Brief Legal Description PARCEL "B" 70 PM 8, SACRAMENTO COUNTY RECORDS

### CORNER TYPE

### COORDINATES(Optional)


Government Corner  Control   
 Meander  Property   
 Rancho  Other

Date of Survey \_\_\_\_\_

N. \_\_\_\_\_  
 E. \_\_\_\_\_  
 Zone \_\_\_\_\_ NAD27  NAD83   
 NAD83 Epoch \_\_\_\_\_  
 Elavation \_\_\_\_\_  
 Vert. Datum: NGVD29  NAV88   
 Meas. Units: Metric  Imperial

Corner - Left as found  Found and tagged  Established  Reestablished  Rebuilt

Identification and type of corner found: Evidence used to identify or procedure used to establish or reestablish the corner:  
SEE ATTACHED EXHIBIT MAP

A description of the physical condition of the monument as found and as set or reset:

SEE ATTACHED EXHIBIT MAP

### SURVEYOR'S STATEMENT

This Corner Record was prepared by me or under my direction in conformance with the Land Surveyors Act on January 20, 2003.

Signed [Signature] P.L.S. or R.C.E. Number RC E 28217

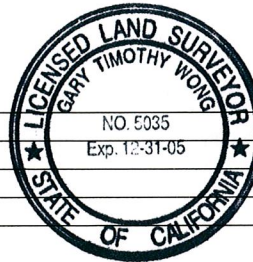
### COUNTY SURVEYOR'S STATEMENT

This Corner Record was received JULY 24, 2003 and examined and filed JULY 24, 2003.

Signed [Signature] P.L.S. or R.C.E. Number 5035

Title ASSOCIATE LAND SURVEYOR

County Surveyor's Comment:



NORTH  
AREA WEST ENGINEERS, INC.

SCALE: 1" = 50'

LEGEND

- ✱ FD. MON. AS NOTED
- ⊕ SET 5/8" REBAR AND CAP RCE 28217

MINNESOTA AVE.

FD. 1 1/4" IP  
PER 70 PM 8  
LS 2217

FD. 3/4" IP  
PER 70 PM 8

S89°15'00"E 217.43'

112.00'

PARCEL A

111.99'

S89°15'00"E 217.07'

FD. 5/8 REBAR  
CAPPED RCE 28217  
PER CORNER RECORD, DOC. #701

70 PM 8

PARCEL B

S00°16'21"E 488.87'

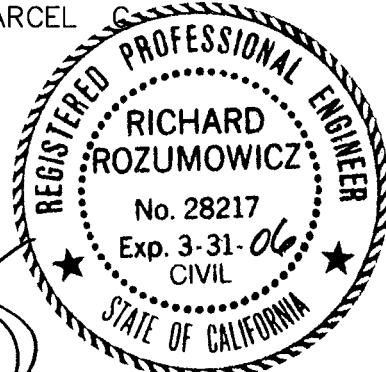
152.87'

S00°05'22"E 486.54'

150.54'

N89°51'42"W 216.57'

PARCEL C



224.00'

FD. 3/8" IRON PIN  
PER 70 PM 8  
© WINDING WAY

N89°51'42"W 215.85'

FD. 1/2" REBAR  
PER 70 PM 8  
NO TAG

S00°16'21"E 488.87'

AREA

WEST ENGINEERS, INC.

7478 SANDALWOOD DRIVE, SUITE 500  
CITRUS HEIGHTS, CA 95621  
(916) 725-5551 - FAX (916) 725-5808  
CIVIL ENGINEERING - PLANNING - SURVEYING

EXHIBIT MAP  
CORNER RECORD  
FOR PARCEL "B", 70 PM 8

COUNTY OF SACRAMENTO STATE OF CALIFORNIA

SCALE 1"=50'

JAN, 2003

SHEET

1 OF 1

02031 CR