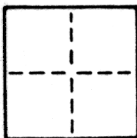


CORNER RECORD

COUNTY OF SACRAMENTO T. _____ R. _____ MERIDIAN _____ CALIFORNIA
 CORNER TYPE: GOVT. CORNER MEANDER RANCHO CONTROL OTHER
 CORNER IDENTIFICATION — DATE OF VISIT OCTOBER 19 85



*N.W. & S.W. CORNERS OF LOT 3, BLOCK 7
 NORTH SACRAMENTO SUBDIVISION NO. 8
 BOOK 13 OF MAPS, MAP NO. 49*

CORNER — LEFT AS FOUND FOUND AND TAGGED REESTABLISHED OBLITERATED CORNER REBUILT

PHYSICAL DESCRIPTION OF CORNER FOUND; EVIDENCE AND METHOD USED TO IDENTIFY OR REESTABLISH

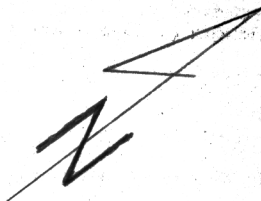
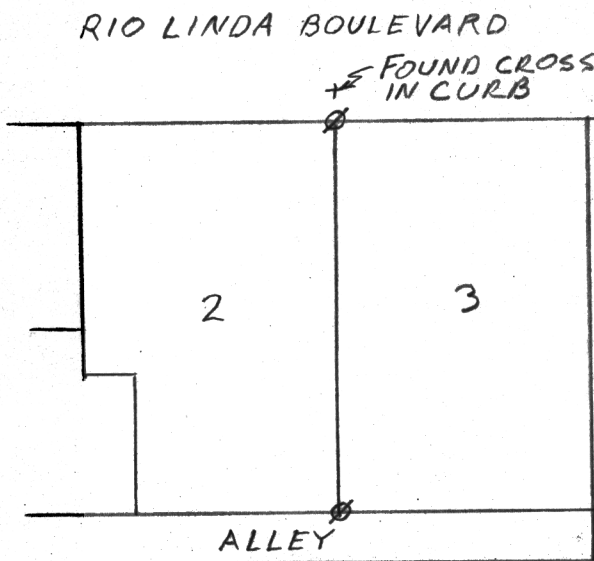
*CORNERS REESTABLISHED PER PLAT OF NORTH
 SACRAMENTO SUBDIVISION NO. 8*

PHYSICAL DESCRIPTION OF MONUMENTS REBUILT OR PERPETUATED

SEE SKETCH

CALIFORNIA COORDINATE SYSTEM ORDER: FIRST SECOND THIRD
 STATIONS USED: NGS (USC & GS) STATE COUNTY OTHER STATION _____ STATION _____
 ZONE _____ ELEVATION _____ NORTHINGS (Y) _____ EASTINGS (X) _____

SKETCH: (Include reference tie or witness points, remarks and topo of area)



*Ø SET 1 1/4" O.D. IRON PIPE TAGGED
 L.S. 2457*



SURVEYOR'S CERTIFICATE

THIS CORNER RECORD WAS PREPARED BY ME OR UNDER MY DIRECTION IN CONFORMANCE WITH THE LAND SURVEYORS ACT
NOVEMBER 21 19 86

SIGNED: Jimmy S. Travis
 L.S. or R.C.E. No.: L.S. 2457

SEAL

COUNTY SURVEYOR'S CERTIFICATE

THE CORNER RECORD WAS RECEIVED NOV 25 19 86
 AND EXAMINED AND FILED DEC 19 19 86
 BY: D. Parker

TITLE: Supervising Eng Techn
 DOCUMENT No. 95

STATEMENT ON BACK OF SHEET

YES NO