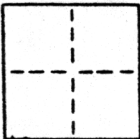


CORNER RECORD

COUNTY OF SACRAMENTO T. 9N. R. 6E. MOUNT DIABLO MERIDIAN CALIFORNIA

CORNER TYPE: GOV'T. CORNER MEANDER RANCHO CONTROL OTHER PROPERTY CORNER

CORNER IDENTIFICATION - DATE OF VISIT _____ 19____



WINDING WAY ESTATES #1 LOT 43

CORNER - LEFT AS FOUND FOUND AND TAGGED REESTABLISHED OBLITERATED CORNER REBUILT

PHYSICAL DESCRIPTION OF CORNER FOUND: EVIDENCE AND METHOD USED TO IDENTIFY OR REESTABLISH
FOUND 3/4" IRON PIPES IN STREET CENTERLINES OF
WINDING WAY ESTATES UNIT NO.1 (54 B.M. 31)

PHYSICAL DESCRIPTION OF MONUMENTS REBUILT OR PERPETUATED
SET 3/4" REBAR AT S.W. CORNER OF LOT 43 AND CHISLE
MARK IN THE BACK OF SIDEWALK AT THE S.E. CORNER OF
LOT 43

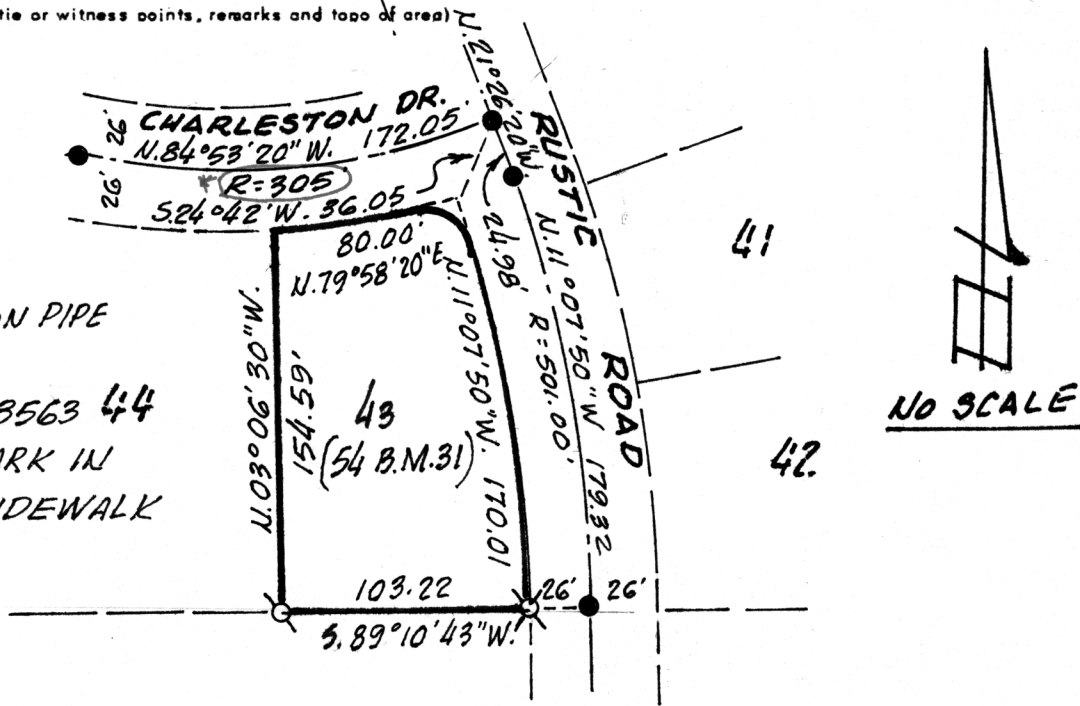
CALIFORNIA COORDINATE SYSTEM ORDER: FIRST SECOND THIRD
 STATIONS USED: NGS (USC & GS) STATE COUNTY OTHER STATION _____ STATION _____
 ZONE _____ ELEVATION _____ NORTHINGS (Y) _____ EASTINGS (X) _____

SKETCH: (Include reference tie or witness points, remarks and topo of area)

* R-306'
(54 B.M. 31)

LEGEND

- FOUND 3/4" IRON PIPE
- ⊗ SET 3/4" REBAR
TAGGED L.S. 3563 44
- ⊗ SET CHISLE MARK IN
BACK OF SIDEWALK



NO SCALE

SURVEYOR'S CERTIFICATE

THIS CORNER RECORD WAS PREPARED BY ME OR UNDER MY DIRECTION IN CONFORMANCE WITH THE LAND SURVEYORS ACT

OCTOBER 28 19 86

SIGNED: Lloyd C. Parker

C.E. No.: L.S. 3563

SEAL

COUNTY SURVEYOR'S CERTIFICATE

THIS CORNER RECORD WAS RECEIVED 11/14 1986
 AND EXAMINED AND FILED 11/17 1986

BY: D PARKER

TITLE: SUPERVISOR CIV. TECH

DOCUMENT No. 93

STATEMENT ON BACK OF SHEET

YES NO

