

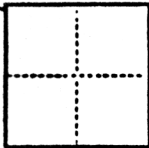
CORNER RECORD

POR. SECTION 9

COUNTY OF SACRAMENTO T. 9 NORTH R. 6 EAST M.D.B. & MERIDIAN CALIFORNIA

CORNER TYPE: GOVT. CORNER MEANDER RANCHO CONTROL OTHER

CORNER IDENTIFICATION — DATE OF VISIT JUNE 19, 1986



A survey of a portion of the San Juan Rancho, and described on that certain Record of Survey filed in Book 27 of Surveys at Page 11, Sacramento County Records as bordering a portion of Parcel "B", and designated as "General Electric Denison TR."

CORNER — LEFT AS FOUND FOUND AND TAGGED REESTABLISHED OBLITERATED CORNER REBUILT

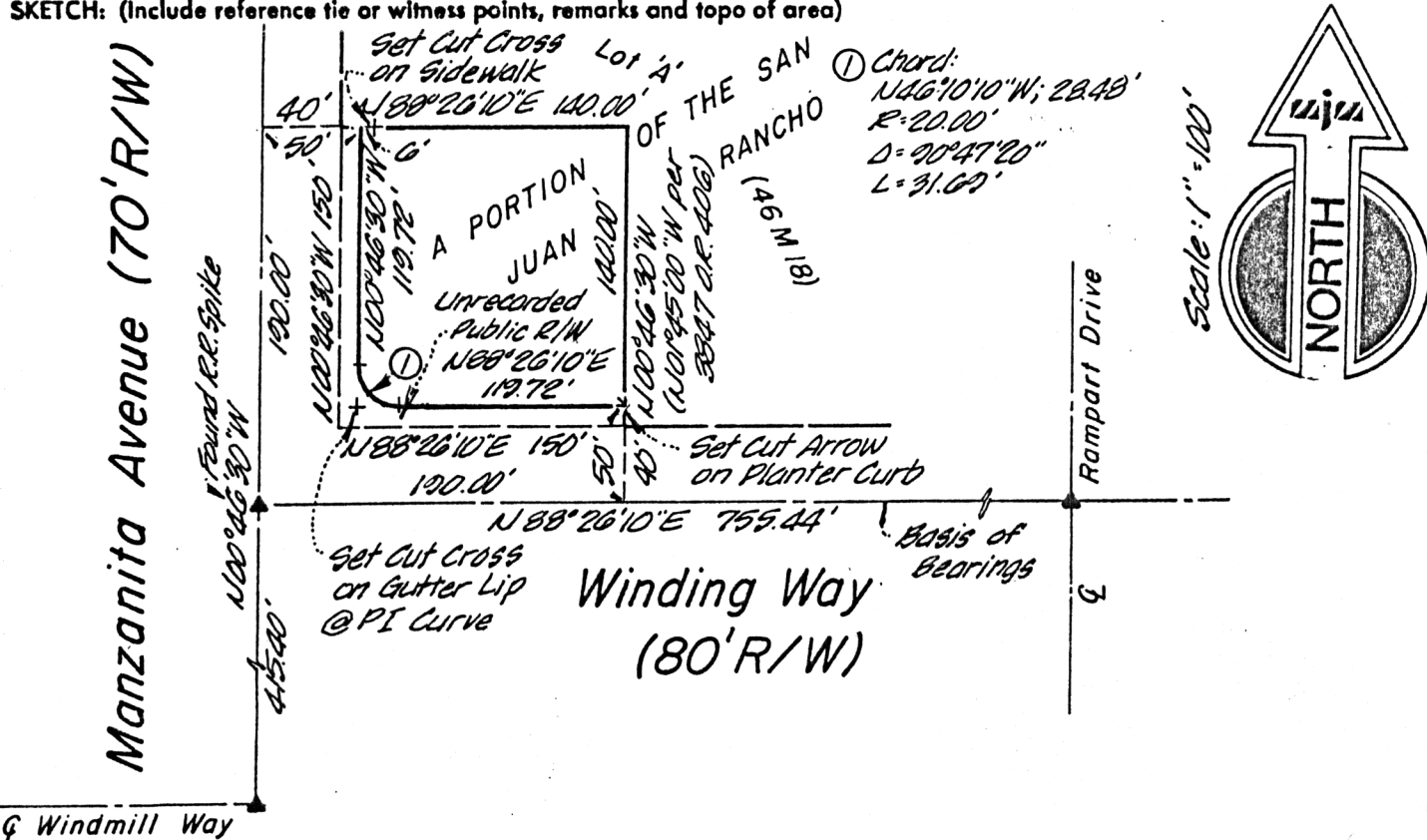
PHYSICAL DESCRIPTION OF CORNER FOUND, EVIDENCE AND METHOD USED TO IDENTIFY OR REESTABLISH

Found County railroad spikes at the centerline intersections of Winding Way and Manzanita Avenue, Manzanita Avenue and Windmill Way, and Winding Way and Rampart Drive. (No known record information.)

PHYSICAL DESCRIPTION OF MONUMENTS REBUILT OR PERPETUATED

Set cut cross at Northwest property corner on sidewalk.
 Set cut cross at point of intersection of a tangent curve (radius=20') on gutter lip on the Southwest corner of the property, at the intersection of Manzanita Avenue and Winding Way.
 Set cut arrow at Southeast property corner on planter curb.
 Nothing set at Northeast corner due to field conditions. (Encroaching wall)

SKETCH: (Include reference tie or witness points, remarks and topo of area)



SURVEYOR'S CERTIFICATE

THIS CORNER RECORD WAS PREPARED BY ME OR UNDER MY DIRECTION IN CONFORMANCE WITH THE LAND SURVEYORS ACT ON AUGUST 19, 1986

SIGNED: [Signature]

L.S. or R.C.E. No. 4804



COUNTY SURVEYOR'S CERTIFICATE

THE CORNER RECORD WAS RECEIVED AUG 25, 1986 AND EXAMINED AND FILED AUG 26, 1986

BY: D. PARKER

TITLE: SUPERVISOR ENG. TECH

DOCUMENT No. 91

STATEMENT ON BACK OF SHEET