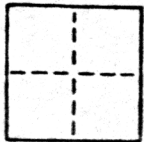


CORNER RECORD

COUNTY OF SACRAMENTO T. _____ R. _____ MDDEM MERIDIAN CALIFORNIA

CORNER TYPE: GOVT. CORNER MEANDER RANCHO CONTROL OTHER

CORNER IDENTIFICATION — DATE OF VISIT _____ 19____



NW 1/4 SECTION 62, RANCHO DGR PASO
LOT 1297, "ARDEN MANOR UNIT NO. 6" — 32 BM 36

CORNER — LEFT AS FOUND FOUND AND TAGGED REESTABLISHED OBLITERATED CORNER REBUILT

PHYSICAL DESCRIPTION OF CORNER FOUND; EVIDENCE AND METHOD USED TO IDENTIFY OR REESTABLISH

SEE SKETCH BELOW.

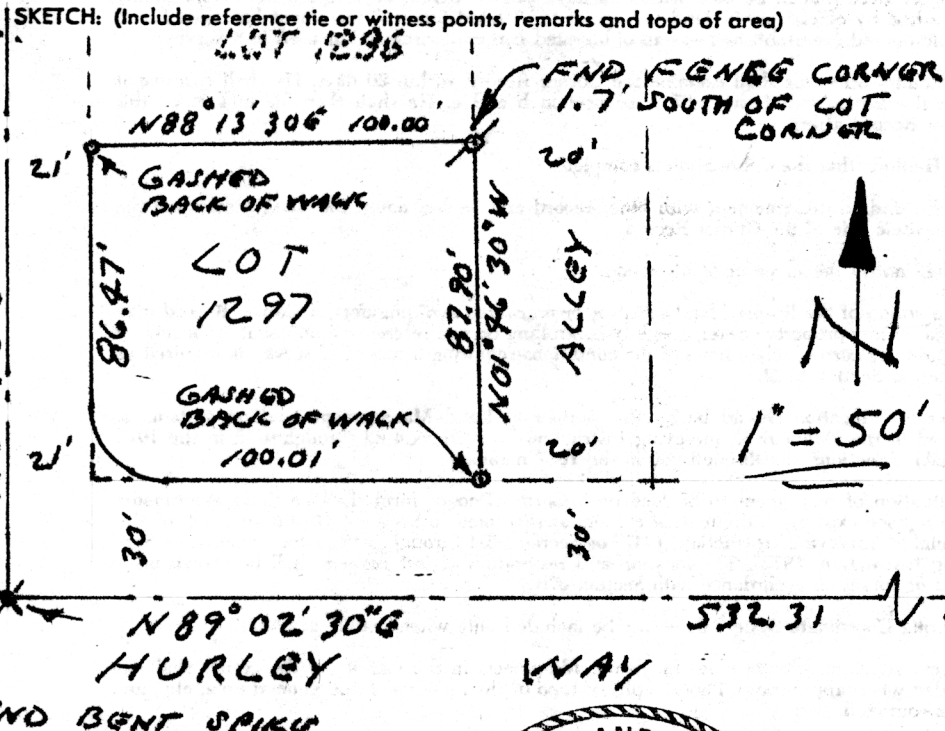
PHYSICAL DESCRIPTION OF MONUMENTS REBUILT OR PERPETUATED

SET 1/2" REBAR CAPPED LS 4715

CALIFORNIA COORDINATE SYSTEM ORDER: FIRST SECOND THIRD
STATIONS USED: NGS (USC & GS) STATE COUNTY OTHER STATION _____
ZONE _____ ELEVATION _____ NORTHINGS (Y) _____ EASTINGS (X) _____

SKETCH: (Include reference tie or witness points, remarks and topo of area)

MONUMENTS
FND - USED
SPLIT OF
STREET

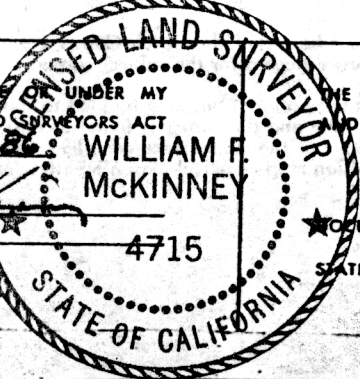


LEGEND
 * FND MONUMENT AS SHOWN
 ○ SET 1/2" REBAR CAPPED LS 4715

MORSE AVE.
FND CO. SPIKE & WASHER

SURVEYOR'S CERTIFICATE

THIS CORNER RECORD WAS PREPARED BY ME UNDER MY DIRECTION IN CONFORMANCE WITH THE LAND SURVEYORS ACT ON AUGUST 4 1986
 SIGNED: William F. McKinney
 L.S. or R.C.E. No.: LS 4715



COUNTY SURVEYOR'S CERTIFICATE

THE CORNER RECORD WAS RECEIVED 8-7 1986
 AND EXAMINED AND FILED 8-7 1986
 BY: D. PARKER
 TITLE: SUPERVISING ENG. TECH
 DOCUMENT No. 87

STATEMENT ON BACK OF SHEET

YES NO