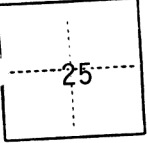


# CORNER RECORD

COUNTY OF Sacramento T. 10N R. 6E M.D.M.        MERIDIAN CALIFORNIA  
 CORNER TYPE: GOVT. CORNER  MEANDER  RANCHO  CONTROL  OTHER  Property Corner  
 CORNER IDENTIFICATION — DATE OF VISIT July 19 86



*SUNRISE EAST #1 LOT 5*

CORNER — LEFT AS FOUND  FOUND AND TAGGED  REESTABLISHED OBLITERATED CORNER  REBUILT

PHYSICAL DESCRIPTION OF CORNER FOUND; EVIDENCE AND METHOD USED TO IDENTIFY OR REESTABLISH

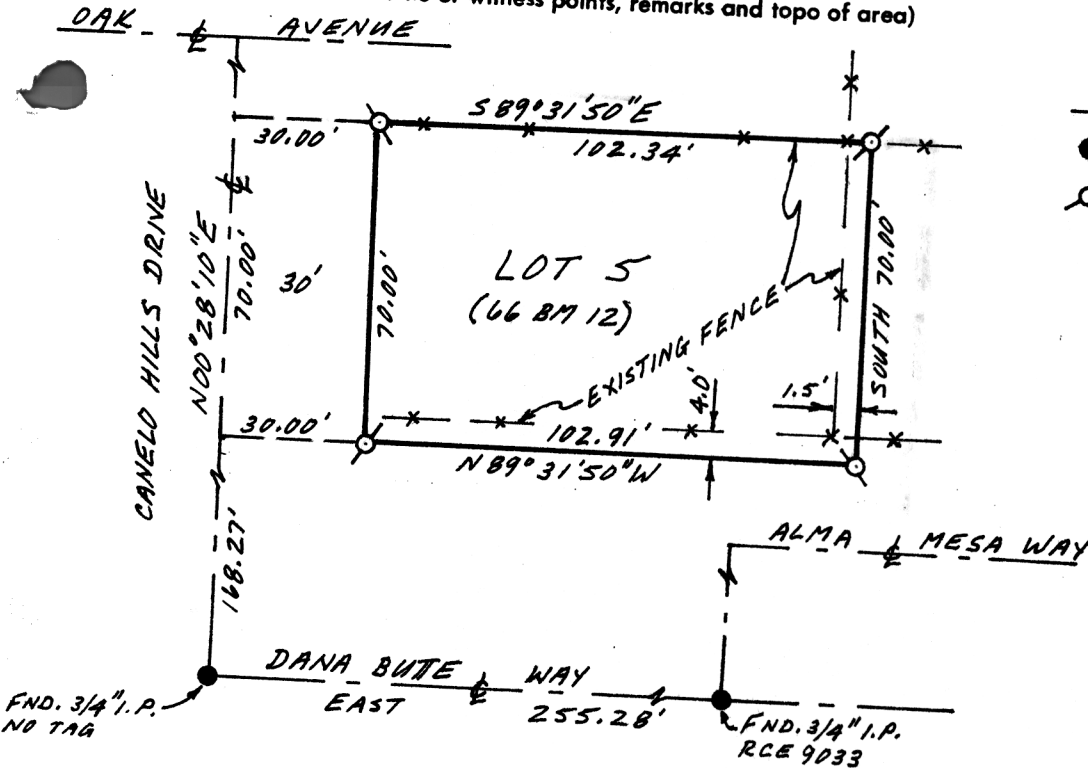
Found 3/4" I.P. RCE9033 at Dana Butte Way and Alma Mesa Way.  
 Found 3/4" I.P. at Dana Butte Way and Canelo Hills Drive.

PHYSICAL DESCRIPTION OF MONUMENTS REBUILT OR PERPETUATED

Set 3/4" rebar at the corners of Lot 5 as shown on 66 BM 12.

COORDINATE SYSTEM ORDER: FIRST  SECOND  THIRD  STATION        EASTINGS (X)       

SKETCH: (Include reference tie or witness points, remarks and topo of area)



LEGEND

- FOUND AS NOTED
- ⊗ SET 3/4" REBAR, TAGGED LS3563



**SURVEYOR'S CERTIFICATE**

THIS CORNER RECORD WAS PREPARED BY ME OR UNDER MY DIRECTION IN CONFORMANCE WITH THE LAND SURVEYORS ACT ON July 19 86

SIGNED Lloyd C. Parker

L.S. or R.C.E. No.: LS 3563



SEAL

# 860097

**COUNTY SURVEYOR'S CERTIFICATE**

THE CORNER RECORD WAS RECEIVED July 22 19 86 AND EXAMINED AND FILED July 25 19 86

BY: O. PARKER

TITLE: SUPERVISOR ENG. TECH

DOCUMENT No. 83

STATEMENT ON BACK OF SHEET

YES  NO