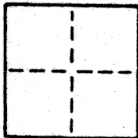


**CORNER RECORD**

COUNTY OF SACRAMENTO T. \_\_\_\_\_ R. \_\_\_\_\_ MERIDIAN \_\_\_\_\_ CALIFORNIA

CORNER TYPE: GOVT. CORNER  MEANDER  RANCHO  CONTROL  OTHER

CORNER IDENTIFICATION — DATE OF VISIT \_\_\_\_\_ 19\_\_\_\_



PORTION OF SEC. 10 RANCHO DEL PASO  
 APN 226-138-01 LOTS 1&2 ROBLA ACRES

CORNER — LEFT AS FOUND  FOUND AND TAGGED  REESTABLISHED OBLITERATED CORNER  REBUILT

PHYSICAL DESCRIPTION OF CORNER FOUND; EVIDENCE AND METHOD USED TO IDENTIFY OR REESTABLISH

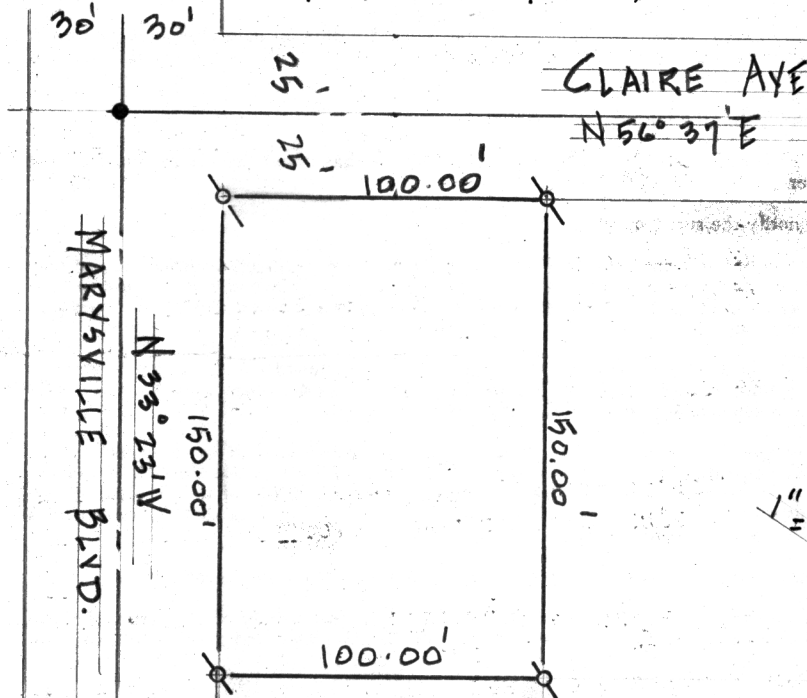
• END 3/4" IRON PIN (NO TAG)

PHYSICAL DESCRIPTION OF MONUMENTS REBUILT OR PERPETUATED

o SET 1" IRON PIPE TAGGED RCE 15949

CALIFORNIA COORDINATE SYSTEM ORDER: FIRST  SECOND  THIRD   
 STATIONS USED: NGS (USC & GS)  STATE  COUNTY  OTHER  STATION \_\_\_\_\_ STATION \_\_\_\_\_  
 ZONE \_\_\_\_\_ ELEVATION \_\_\_\_\_ NORTHINGS (Y) \_\_\_\_\_ EASTINGS (X) \_\_\_\_\_

SKETCH: (Include reference tie or witness points, remarks and topo of area)



**SURVEYOR'S CERTIFICATE**

THIS CORNER RECORD WAS PREPARED BY ME OR UNDER MY DIRECTION IN CONFORMANCE WITH THE LAND SURVEYORS ACT ON 11 APRIL 1986

SIGNED: L. J. Oliveira

E.S. of R.C.E. No. RCE 15949

SEAL

**COUNTY SURVEYOR'S CERTIFICATE**

THE CORNER RECORD WAS RECEIVED June 13, 1986 AND EXAMINED AND FILED June 16, 1986

BY: D PARKER

TITLE: Supervising Eng. tech.

DOCUMENT No. 76

STATEMENT ON BACK OF SHEET

YES  NO