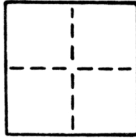


# CORNER RECORD

COUNTY OF SACRAMENTO T. BN R. SE MT. DIABLO MERIDIAN CALIFORNIA

CORNER TYPE: GOVT. CORNER  MEANDER  RANCHO  CONTROL  OTHER

CORNER IDENTIFICATION — DATE OF VISIT MAY 19, 1986



REESTABLISHED S.W. COR. & N.W. COR.  
LOT 102, MCKINLEY BOULEVARD TRACT NO. 2 (BK. 20 OF MAPS, NO. 1)

CORNER — LEFT AS FOUND  FOUND AND TAGGED  REESTABLISHED OBLITERATED CORNER  REBUILT

PHYSICAL DESCRIPTION OF CORNER FOUND; EVIDENCE AND METHOD USED TO IDENTIFY OR REESTABLISH

FOUND AND/OR SET STREET & POINTS.  
SEE SKETCH BELOW.

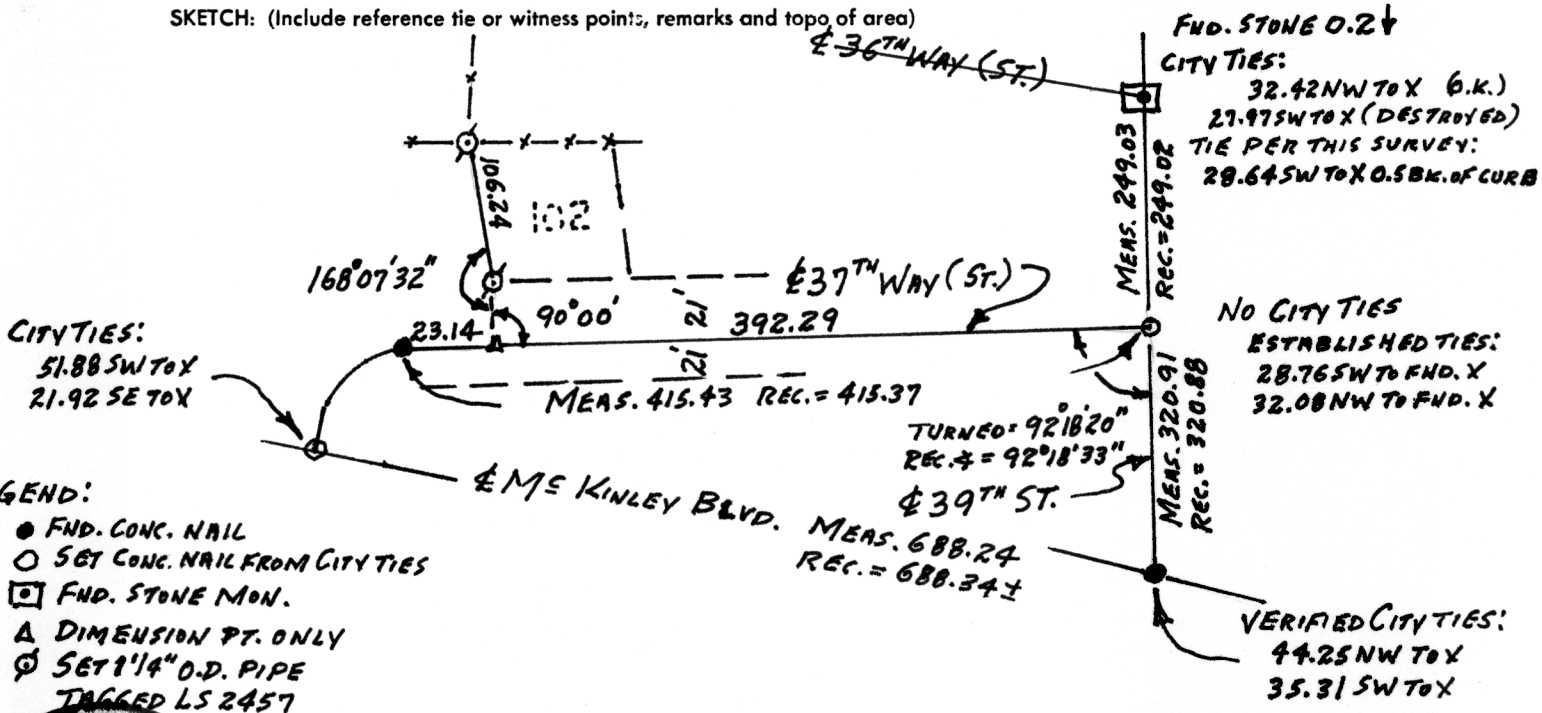
PHYSICAL DESCRIPTION OF MONUMENTS REBUILT OR PERPETUATED

SET 1 1/4" O.D. IRON PIPES TAGGED LS 2457  
AT S.W. COR. & AT N.W. COR. OF LOT 102.

FIELD BK. 197, PG. 29

CALIFORNIA COORDINATE SYSTEM ORDER: FIRST  SECOND  THIRD   
STATIONS USED: NGS (USC & GS)  STATE  COUNTY  OTHER  STATION \_\_\_\_\_ STATION \_\_\_\_\_  
ZONE \_\_\_\_\_ ELEVATION \_\_\_\_\_ NORTHINGS (Y) \_\_\_\_\_ EASTINGS (X) \_\_\_\_\_

SKETCH: (Include reference tie or witness points, remarks and topo of area)



- LEGEND:**
- FND. CONC. NAIL
  - SET CONC. NAIL FROM CITY TIES
  - FND. STONE MON.
  - Δ DIMENSION PT. ONLY
  - ⊙ SET 1 1/4" O.D. PIPE TAGGED LS 2457



**SURVEYOR'S CERTIFICATE**  
THIS CORNER RECORD WAS PREPARED BY ME OR UNDER MY DIRECTION IN CONFORMANCE WITH THE LAND SURVEYORS ACT  
MAY 20, 1986  
SIGNED: Timothy S. Parker  
R.C.E. No.: L.S. 2457

**COUNTY SURVEYOR'S CERTIFICATE**  
THE CORNER RECORD WAS RECEIVED MAY 22, 1986  
AND EXAMINED AND FILED MAY 22, 1986  
BY: D. PARKER  
TITLE: SUPERVISING ENG. TECH  
DOCUMENT No. 73  
STATEMENT ON BACK OF SHEET

YES  NO