

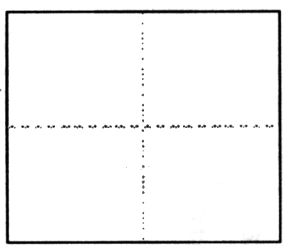
**CORNER RECORD**

Document Number 722

City of \_\_\_\_\_

County of Sacramento, California

Chief Legal Description: Intersection of 8<sup>th</sup> Street and Albemarle Avenue, Hampton Manor



**CORNER TYPE**

**COORDINATES**

Government Corner ( )	Control ( )	N. _____
Meander ( )	Property (X)	E. _____
Rancho ( )	Other ( )	Zone _____ Datum _____
Date of Survey <u>June 27, 2001</u>		Elev. _____

Corner- Left as found ( ) Found and tagged ( ) Established ( ) Reestablished (X) Rebuilt ( )

Identification and type of corner found: Evidence used to identify or procedure used to establish or reestablish the corner:

On June 27, 2001, found 5/8" Rebar at the intersection of 8<sup>th</sup> Street and Albemarle Avenue as per 132BM7. Rebar was referenced before construction. See County of Sacramento Field Notes Vol. A-225.

A description of the physical condition of the monument as found and as set or reset:

On July 30, 2002, set 2" Brass Disc in monument well from references, stamped "Sacramento Co. Dept. of Public Works."

**SURVEYOR'S STATEMENT**

This Corner Record was prepared by me or under my direction in conformance with  
The Land Surveyors' Act on July 30 2002  
Signed William M Carmack L.S. or R.C.E. Number 5887



**COUNTY SURVEYOR'S STATEMENT**

This corner Record was received Oct 11, 2002 and examined and filed Oct 21, 2002  
Signed Gary Timothy Wong Title Assoc. Land Surveyor

County Surveyor's Comment \_\_\_\_\_



70°F

6/27/01

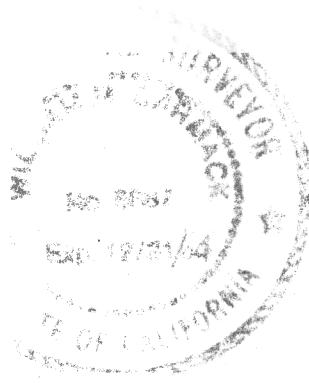
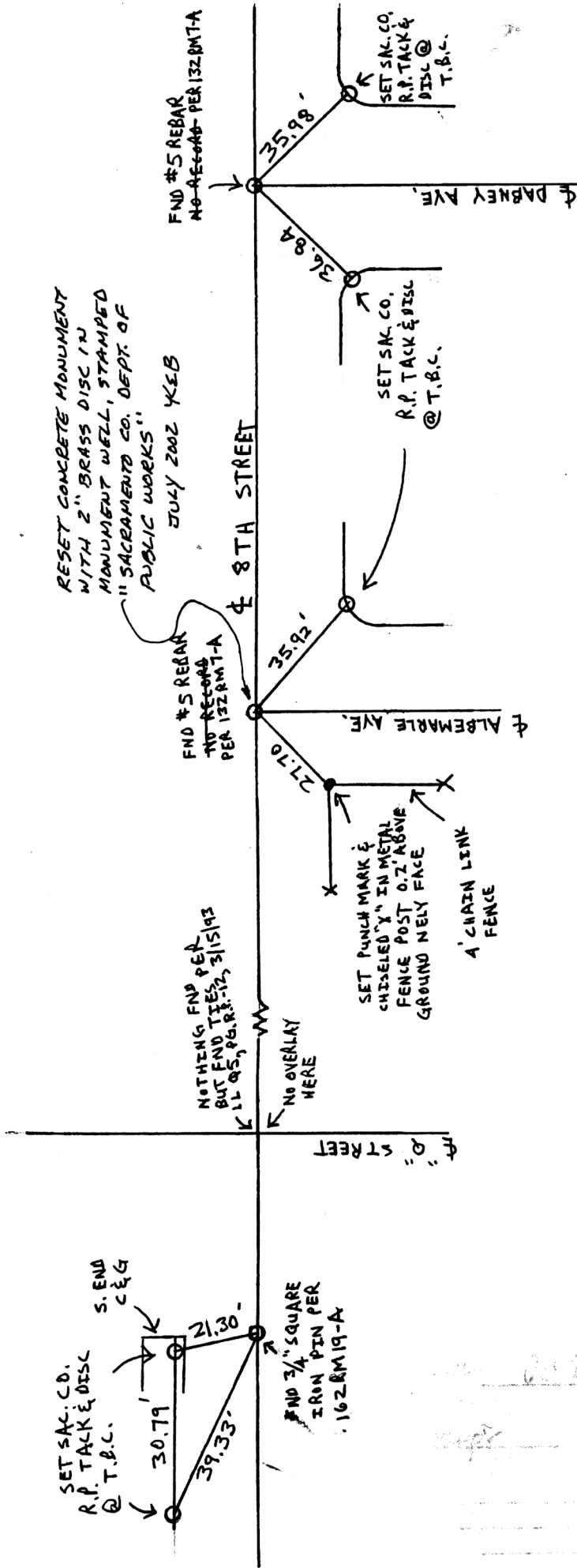
R.P.-2 OF 4

T. BEALE  
D. BEAN  
R. HAYES

A.C. OVERLAY - CONTRACT # 3570

8 TH STREET

\* ALL DISTANCES THIS SET R.P. NOTES CHAINED FLAT  
WITH NO CORRECTIONS MADE FOR TEMPERATURE



A 225