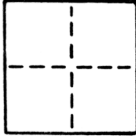


CORNER RECORD

COUNTY OF SACRAMENTO T. 7N R. 4E MT. DIABLO MERIDIAN CALIFORNIA
 CORNER TYPE: GOV'T. CORNER MEANDER RANCHO CONTROL OTHER
 CORNER IDENTIFICATION - DATE OF VISIT MAY 8, 1986



REESTABLISHED S.W. COR. & S.E. COR.
LOT 253, CARELLA GARDENS No. 3 (BK. 49 OF MAPS, No. 27)

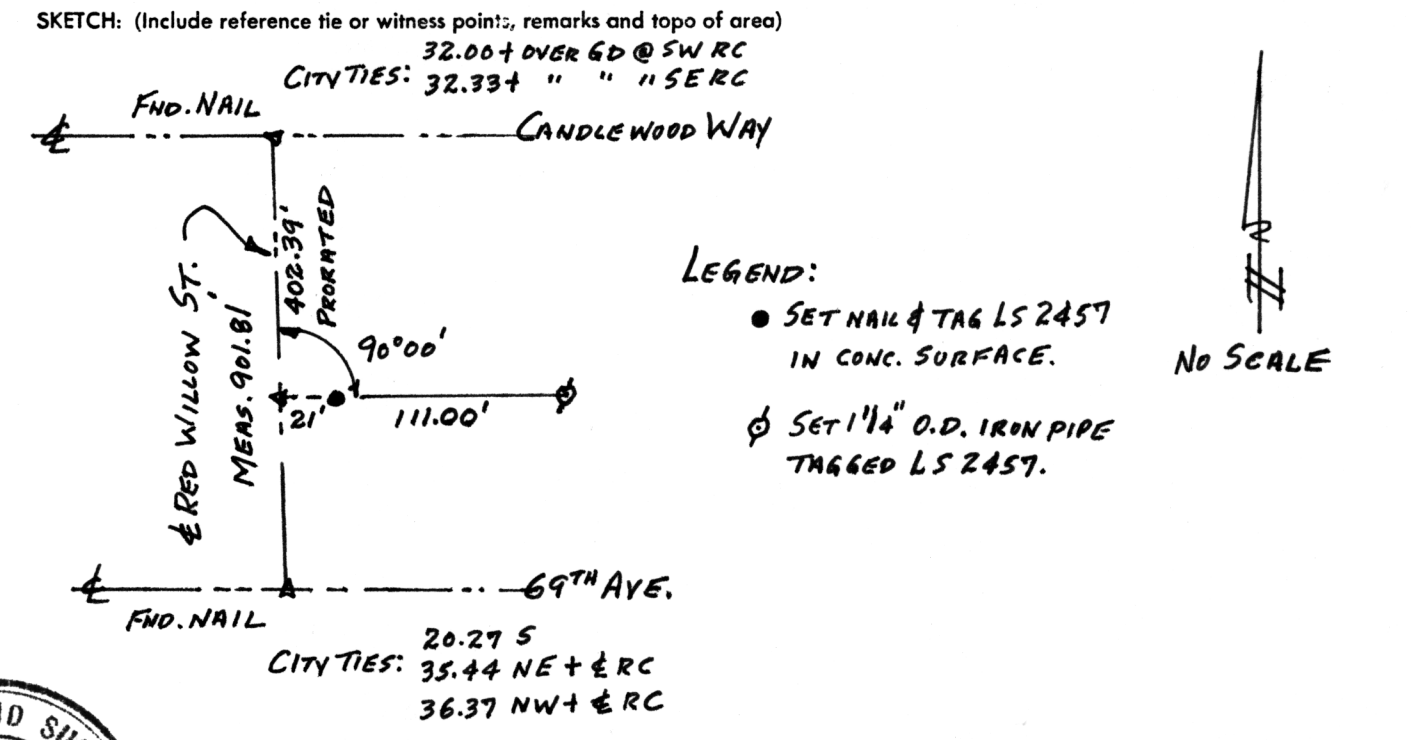
CORNER - LEFT AS FOUND FOUND AND TAGGED REESTABLISHED OBLITERATED CORNER REBUILT

PHYSICAL DESCRIPTION OF CORNER FOUND; EVIDENCE AND METHOD USED TO IDENTIFY OR REESTABLISH
FND. CONC. NAIL @ INTX. CANDLEWOOD WAY & RED WILLOW ST. (VERIFIED CITY SWING TIES TO SAME)
 " " " **RED WILLOW ST. & 69TH AVE.** " " "

PHYSICAL DESCRIPTION OF MONUMENTS REBUILT OR PERPETUATED
SET NAIL & TAG LS 2457 IN CONC. SURFACE @ S.W. COR. LOT 253.
SET 1 1/4" O.D. IRON PIPE TAGGED LS 2457 @ S.E. COR. LOT 253.

FIELD BK. 176A, PG. 76

CALIFORNIA COORDINATE SYSTEM ORDER: FIRST SECOND THIRD
 STATIONS USED: NGS (USC & GS) STATE COUNTY OTHER STATION _____ STATION _____
 ZONE _____ ELEVATION _____ NORTHINGS (Y) _____ EASTINGS (X) _____



LEGEND:

- SET NAIL & TAG LS 2457 IN CONC. SURFACE.
- ⊕ SET 1 1/4" O.D. IRON PIPE TAGGED LS 2457.

NO SCALE



SURVEYOR'S CERTIFICATE
 THIS CORNER RECORD WAS PREPARED BY ME OR UNDER MY DIRECTION IN CONFORMANCE WITH THE LAND SURVEYORS ACT OF MAY 8, 1986
 SIGNED: Timothy S. Tamm
 R.C.E. No.: LS 2457

COUNTY SURVEYOR'S CERTIFICATE
 THE CORNER RECORD WAS RECEIVED 5-22 1986
 AND EXAMINED AND FILED 5-22 1986
 BY: D. PARKER
 TITLE: SUPERVISING ENG. TECH
 DOCUMENT No. 72

STATEMENT ON BACK OF SHEET YES NO