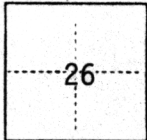


# CORNER RECORD

COUNTY OF Sacramento T. 10N R. 7E MDM MERIDIAN CALIFORNIA  
 CORNER TYPE: GOV'T. CORNER  MEANDER  RANCHO  CONTROL  OTHER  Property Corner  
 CORNER IDENTIFICATION — DATE OF VISIT May 19 86



## VALLEY PINES #6 - LOT 23

CORNER — LEFT AS FOUND  FOUND AND TAGGED  REESTABLISHED OBLITERATED CORNER  REBUILT

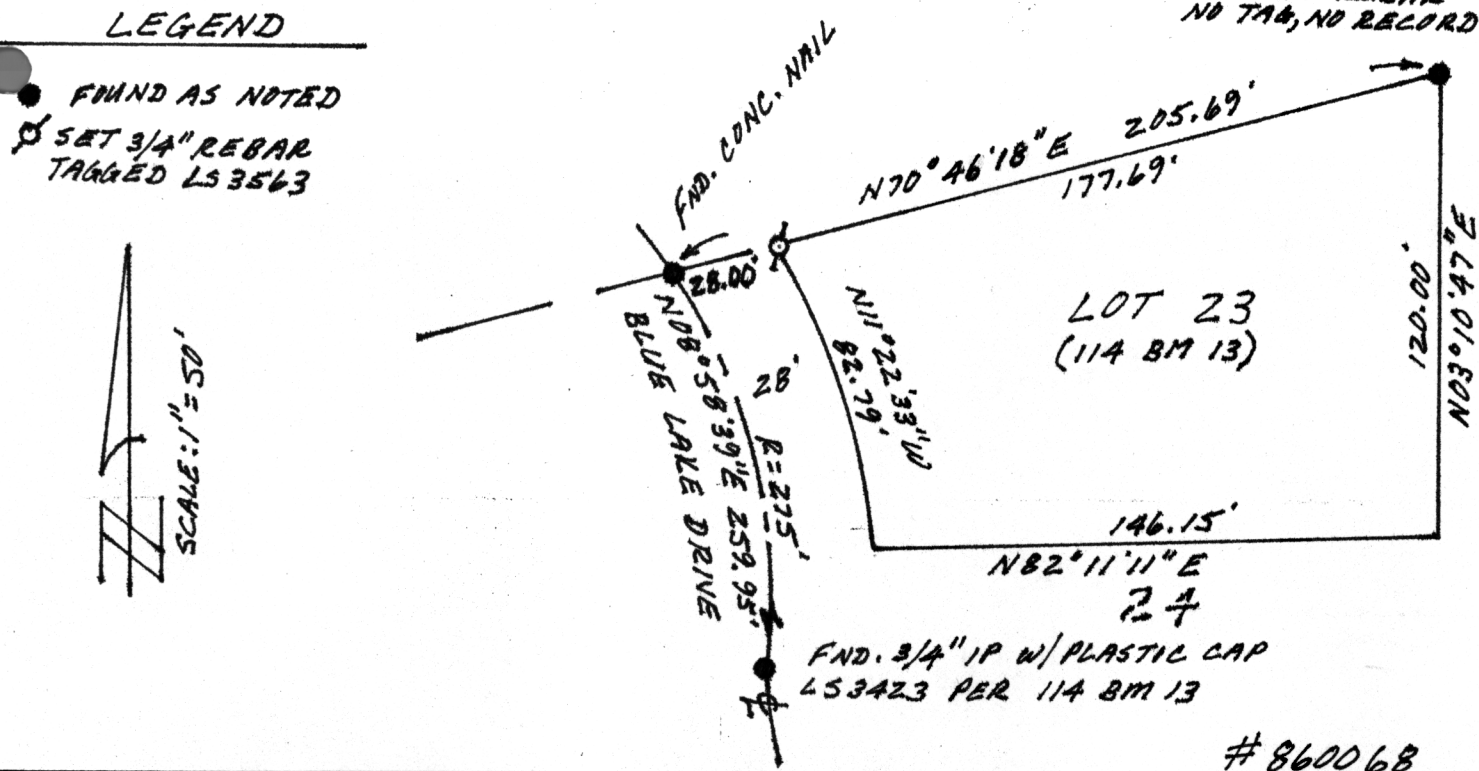
**PHYSICAL DESCRIPTION OF CORNER FOUND; EVIDENCE AND METHOD USED TO IDENTIFY OR REESTABLISH**

Found 5/8" rebar, no tag, no record at NE corner Lot 23. Found concrete nail in centerline Blue Lake Drive at subdivision boundary. Found 3/4" IP with plastic cap stamped LS 3423 at the PRC of Blue Lake Drive per 114 BM 13.

**PHYSICAL DESCRIPTION OF MONUMENTS REBUILT OR PERPETUATED**

Set 3/4" rebar at the NW corner of Lot 23 on the 28' R/W line as shown on 114 BM 13.

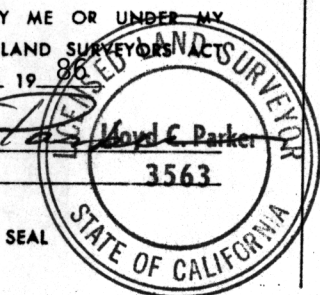
SKETCH: (Include reference tie or witness points, remarks and topo of area)



**SURVEYOR'S CERTIFICATE**

THIS CORNER RECORD WAS PREPARED BY ME OR UNDER MY DIRECTION IN CONFORMANCE WITH THE LAND SURVEYORS ACT  
 \_\_\_\_\_ May 19 86

SIGNED: David T. Parker David C. Parker  
 L.S. or R.C.E. No.: LS 3563 3563



**COUNTY SURVEYOR'S CERTIFICATE**

THE CORNER RECORD WAS RECEIVED 5-15 19 86  
 AND EXAMINED AND FILED 5-16 19 86

BY: D. PARKER  
 TITLE: SUPERVISING ENGINEERING TECH

DOCUMENT No. 70

STATEMENT ON BACK OF SHEET

YES  NO