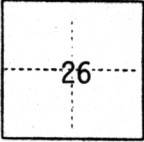


CORNER RECORD

COUNTY OF Sacramento T. 10N R. 6E MDM MERIDIAN CALIFORNIA
 CORNER TYPE: GOV'T. CORNER MEANDER RANCHO CONTROL OTHER Property Corners
 CORNER IDENTIFICATION — DATE OF VISIT May 1986



DUDLEY MEADOWS - LOT 44

CORNER — LEFT AS FOUND FOUND AND TAGGED REESTABLISHED OBLITERATED CORNER REBUILT

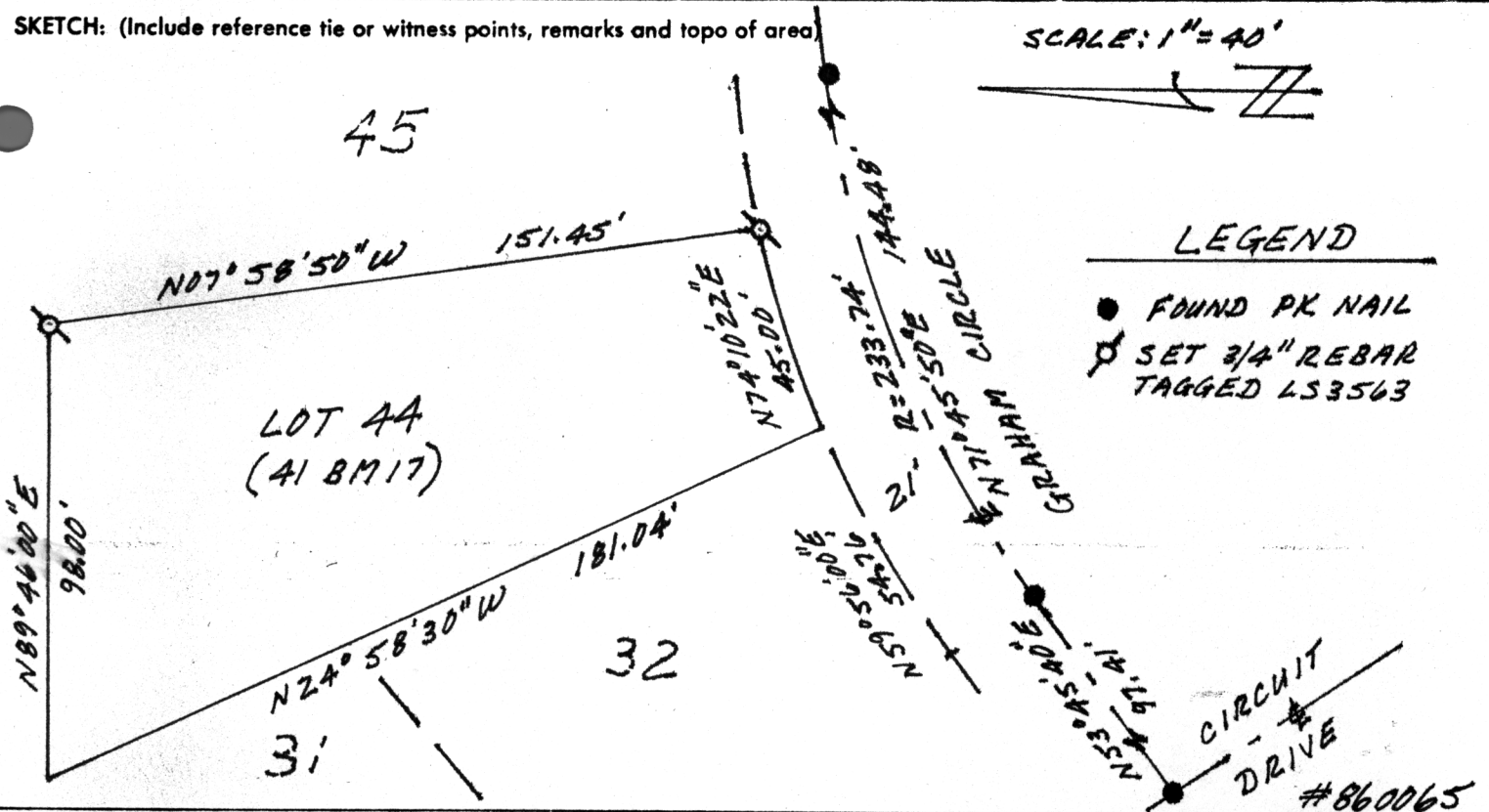
PHYSICAL DESCRIPTION OF CORNER FOUND; EVIDENCE AND METHOD USED TO IDENTIFY OR REESTABLISH

Found Pk nails along Graham Drive at the EC, BC and Circuit Drive

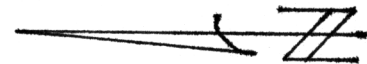
PHYSICAL DESCRIPTION OF MONUMENTS REBUILT OR PERPETUATED

Set 3/4" rebar tagged L.S. 3563 at the SE and NE Corners of Lot 44 as shown on 41 BM 17.

SKETCH: (Include reference tie or witness points, remarks and topo of area)



SCALE: 1" = 40'



LEGEND

- FOUND PK NAIL
- ⊗ SET 3/4" REBAR TAGGED L.S. 3563

SURVEYOR'S CERTIFICATE

THIS CORNER RECORD WAS PREPARED BY ME OR UNDER MY DIRECTION IN CONFORMANCE WITH THE LAND SURVEYORS ACT ON May 1986

SIGNED: Lloyd C. Parker

L.S. or R.C.E. No.: L.S. 3563



SEAL

COUNTY SURVEYOR'S CERTIFICATE

THE CORNER RECORD WAS RECEIVED 5-15 1986 AND EXAMINED AND FILED 5-16 1986

BY: D. PARKER

TITLE: SUPERVISOR ENGINEERING TECH

DOCUMENT No. 69

STATEMENT ON BACK OF SHEET

YES NO