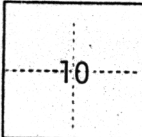


# CORNER RECORD

COUNTY OF Sacramento  Section 10  Rancho Del Paso  MERCIDIAN CALIFORNIA

CORNER TYPE: GOV'T. CORNER  MEANDER  RANCHO  CONTROL  OTHER  Property Corners

CORNER IDENTIFICATION — DATE OF VISIT May 1986



## ACME ACRES - LOT 89

CORNER — LEFT AS FOUND  FOUND AND TAGGED  REESTABLISHED OBLITERATED CORNER  REBUILT

PHYSICAL DESCRIPTION OF CORNER FOUND; EVIDENCE AND METHOD USED TO IDENTIFY OR REESTABLISH

Found PK nail at the intersections of Ada Lane and Rood Ave.; Rood Ave. and Acme Ave.; and Acme Ave. and Vinci Ave.

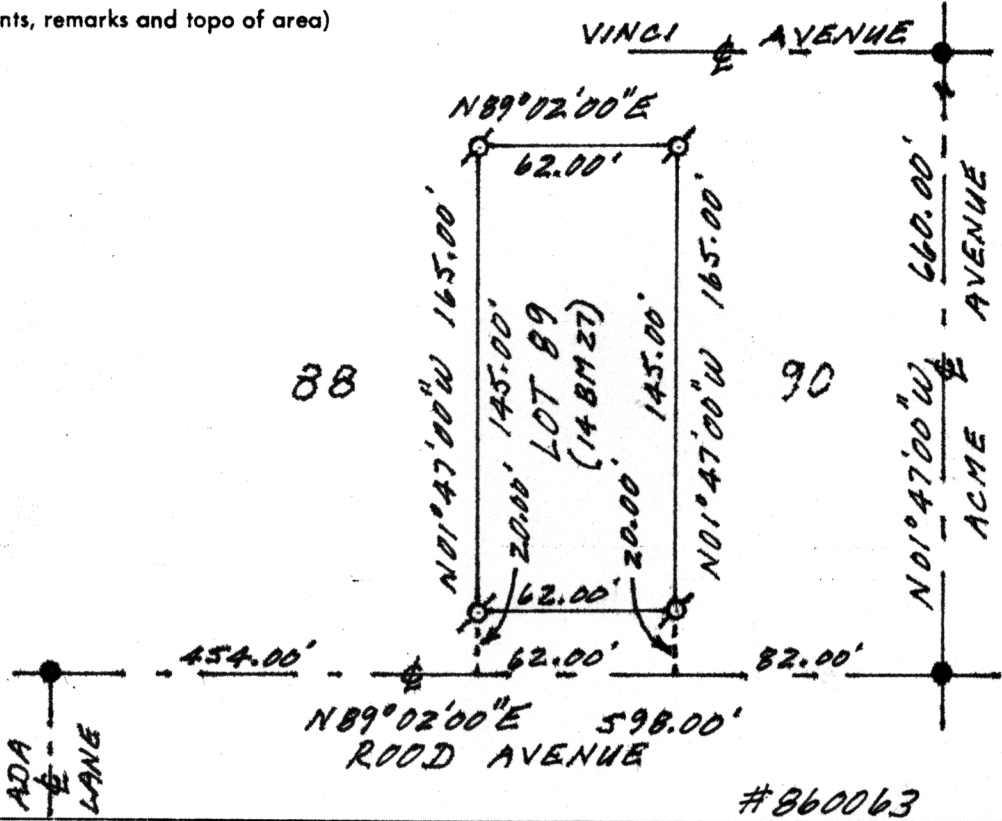
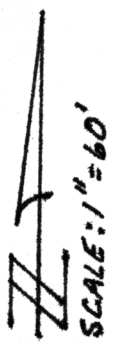
PHYSICAL DESCRIPTION OF MONUMENTS REBUILT OR PERPETUATED

Set 3/4" rebar tagged LS 3563 at the SE and SW corners on the 20' R/W line and at the NE and NW corners of Lot 89 as shown on 14 BM 27.

SKETCH: (Include reference tie or witness points, remarks and topo of area)

### LEGEND

- FOUND PK NAIL
- ⊕ SET 3/4" REBAR TAGGED LS 3563



#### SURVEYOR'S CERTIFICATE

THIS CORNER RECORD WAS PREPARED BY ME OR UNDER MY SECTION IN CONFORMANCE WITH THE LAND SURVEYORS ACT  
 May 1986  
 SIGNED: Lloyd C. Parker  
 L.S. or R.C.E. No.: LS-3563  
 3563  
 STATE OF CALIFORNIA

#### COUNTY SURVEYOR'S CERTIFICATE

THE CORNER RECORD WAS RECEIVED 5-15 1986  
 AND EXAMINED AND FILED 5-16 1986  
 BY: D. PARKER  
 TITLE: SUPERVISING ENGINEERING TECH  
 DOCUMENT No. 68  
 STATEMENT ON BACK OF SHEET YES  NO