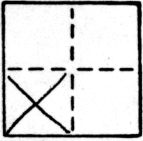


# CORNER RECORD

COUNTY OF SACRAMENTO T. 9 N. R. 6 E. MT. DIABLO MERIDIAN CALIFORNIA  
 CORNER TYPE: GOVT. CORNER  MEANDER  RANCHO  CONTROL  OTHER  SUBDIVISION BOUNDARY  
 CORNER IDENTIFICATION — DATE OF VISIT FEB. 25, 19 86



LOT 7 SAN JUAN HTS #1

CORNER — LEFT AS FOUND  FOUND AND TAGGED  REESTABLISHED OBLITERATED CORNER  REBUILT

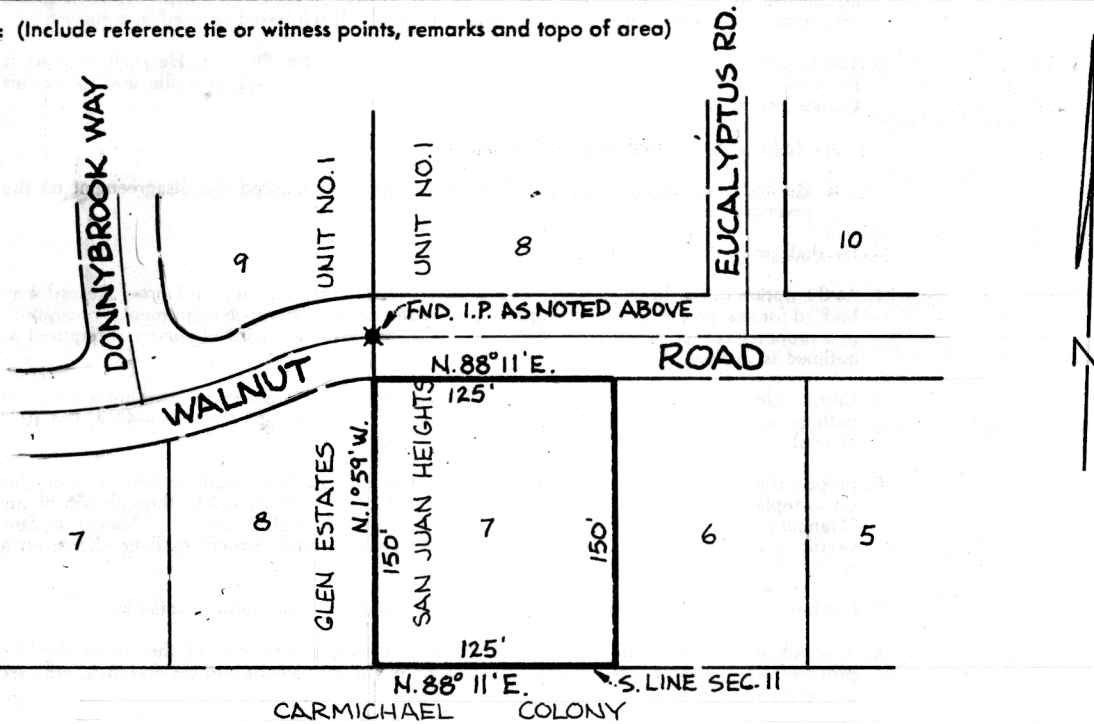
PHYSICAL DESCRIPTION OF CORNER FOUND; EVIDENCE AND METHOD USED TO IDENTIFY OR REESTABLISH

3/4" DIA. IRON PIPE ACCEPTED AS CENTERLINE OF WALNUT RD. ON  
THE EAST LINE OF GLEN ESTATES UNIT NO. 1, SAID LINE BEING COMMON  
TO THE WEST LINE OF SAN JUAN HEIGHTS UNIT NO. 1      27 BM6

PHYSICAL DESCRIPTION OF MONUMENTS REBUILT OR PERPETUATED

CALIFORNIA COORDINATE SYSTEM ORDER: FIRST  SECOND  THIRD   
 STATIONS USED: NGS (USC & GS)  STATE  COUNTY  OTHER  STATION \_\_\_\_\_ STATION \_\_\_\_\_  
 ZONE \_\_\_\_\_ ELEVATION \_\_\_\_\_ NORTHINGS (Y) \_\_\_\_\_ EASTINGS (X) \_\_\_\_\_

SKETCH: (Include reference tie or witness points, remarks and topo of area)



**SURVEYOR'S CERTIFICATE**

THIS CORNER RECORD WAS PREPARED BY ME OR UNDER MY DIRECTION IN CONFORMANCE WITH THE LAND SURVEYORS ACT ON MARCH 3, 19 86

SIGNED: Steve A. Gardner  
 L.S. or R.C.E. No.: L.S. 5123

SEAL

**COUNTY SURVEYOR'S CERTIFICATE**

THE CORNER RECORD WAS RECEIVED MAR 7, 19 86 AND EXAMINED AND FILED MAR 11, 19 86

BY: [Signature]  
 TITLE: Supervising Engineering Prof  
 DOCUMENT No. 63

STATEMENT ON BACK OF SHEET

YES  NO