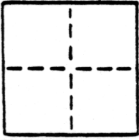


# CORNER RECORD

COUNTY OF Sacramento T. 9 N. R. 7 E. M. 0. MERIDIAN CALIFORNIA  
 CORNER TYPE: GOVT. CORNER  MEANDER  RANCHO  CONTROL  OTHER   
 CORNER IDENTIFICATION — DATE OF VISIT Oct. 11 & Nov. 23 1985



CORNERS OF LOT 16 "SLEEPY HOLLOW" 128/18 & 128/18a

CORNER — LEFT AS FOUND  FOUND AND TAGGED  REESTABLISHED OBLITERATED CORNER  REBUILT

**PHYSICAL DESCRIPTION OF CORNER FOUND; EVIDENCE AND METHOD USED TO IDENTIFY OR REESTABLISH**

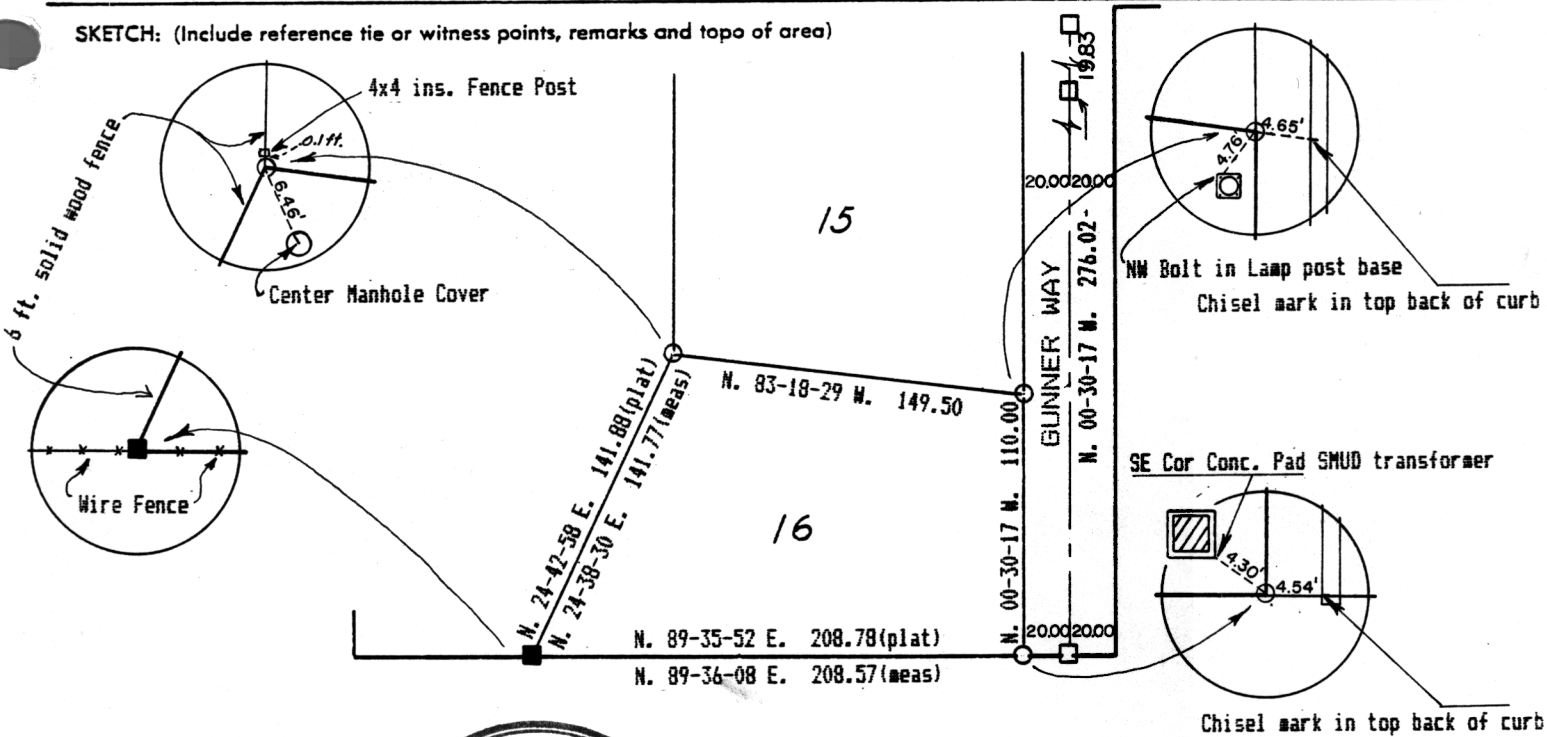
- Found 1 in. iron pipes, flush with pavement, centerline Gunner Way, with brass tag in top marked "RCE 14512". All 3 monuments found in correct relation to each other, and chisel marks found in top back of curb, per plat "Sleepy Hollow" and used to control re-establishment of NW, NE and SE corners of lot 16.
- Found 5/8 in. steel rebar, projecting 4 ins. above ground, with brass washer marked "RCE 14512" attached, approx. 0.2 ft. from 4x4 ins. wood fence post. This monument found to be N. 84-53 E., 0.21 ft. from calculated position. This difference is not considered to be a material discrepancy. Fence construction possibly disturbed monument location.

**PHYSICAL DESCRIPTION OF MONUMENTS REBUILT OR PERPETUATED**

- Set 1/2 in. nominal rebar, 24 ins. long, 4-6 ins. below current ground surface, with yellow plastic cap akd. "WAHL LS 5551".

CALIFORNIA COORDINATE SYSTEM ORDER: FIRST  SECOND  THIRD   
 STATIONS USED: NGS (USC & GS)  STATE  COUNTY  OTHER  STATION \_\_\_\_\_  
 ZONE \_\_\_\_\_ ELEVATION \_\_\_\_\_ NORTHINGS (Y) \_\_\_\_\_ EASTINGS (X) \_\_\_\_\_

SKETCH: (Include reference tie or witness points, remarks and topo of area)



**SURVEYOR'S CERTIFICATE**  
 THIS CORNER RECORD WAS PREPARED BY MELOR UNDER MY DIRECTION IN CONFORMANCE WITH THE LAND SURVEYORS ACT ON January 25 1986  
 SIGNED: Jerry L. Wahl No. 5551  
 L.S. or R.C.E. No.: LS 5551



**COUNTY SURVEYOR'S CERTIFICATE**  
 THE CORNER RECORD WAS RECEIVED FEB 21 1986 AND EXAMINED AND FIXED FEB 24 1986  
 BY: David Smith  
 TITLE: Supervising Engineering Tech  
 DOCUMENT No. 62

STATEMENT ON BACK OF SHEET

YES  NO