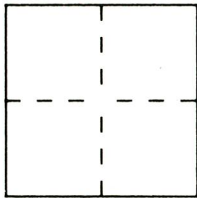


CORNER RECORD

Document Number 619

City of _____ County of SACRAMENTO, California

Brief Legal Description PARCEL 2. 62 P.M. 10 & PARCEL B. 33 PM 19



CORNER TYPE

Government Corner Control
 Meander Property
 Rancho Other
 Date of Survey NOVEMBER, 2000

COORDINATES (Optional)

N. N/A
 E. _____
 Zone _____ Datum _____
 Elev. _____

Corner — Left as found Found and tagged Established Reestablished Rebuilt

Identification and type of corner found: Evidence used to identify or procedure used to establish or reestablish the corner:

REESTABLISHED FROM RECORD DATA AND FOUND MONUMENTS AS SHOWN ON THE ABOVE NAMED MAP.
SEE SKETCH ON BACK SIDE OF THIS DOCUMENT FOR PHYSICAL DESCRIPTION OF MONUMENTS FOUND AND SET.

A description of the physical condition of the monument as found and as set or reset: _____

- FOUND 1/2" REBAR. TAGGED L.S. 5318
- FOUND 3/4" IRON PIPE. NO TAG
- DIMENSION POINT NOTHING FOUND NOTHING SET.
- ♂ SET 5/8" REBAR W/PLASTIC CAP R.C.E. 15949

SURVEYOR'S STATEMENT

This Corner Record was prepared by me or under my direction in conformance with the Land Surveyors' Act on NOVEMBER, 9 2000

Signed L. J. Oliveira L.S. or R.C.E. Number R.C.E. 15949

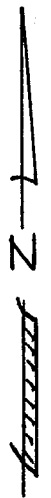


COUNTY SURVEYOR'S STATEMENT

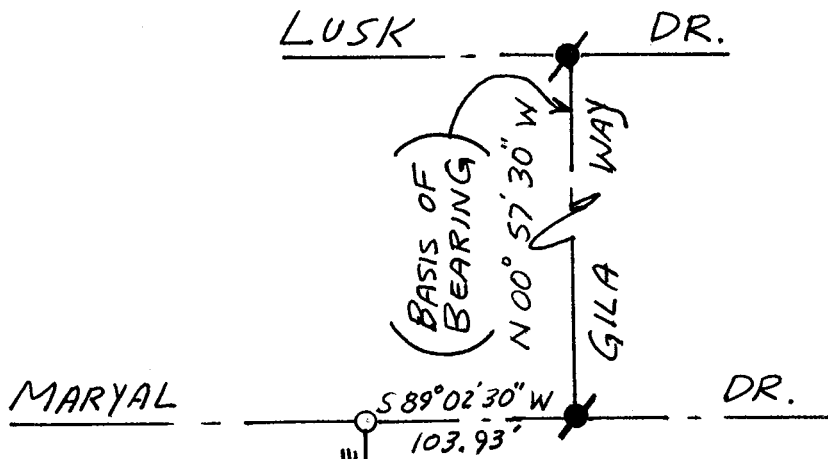
This Corner Record was received NOVEMBER 27, 2000 and examined and filed NOVEMBER 27, 2000

Signed Paul Parker Title Supervisor - Map Checking

County Surveyor's Comment _____



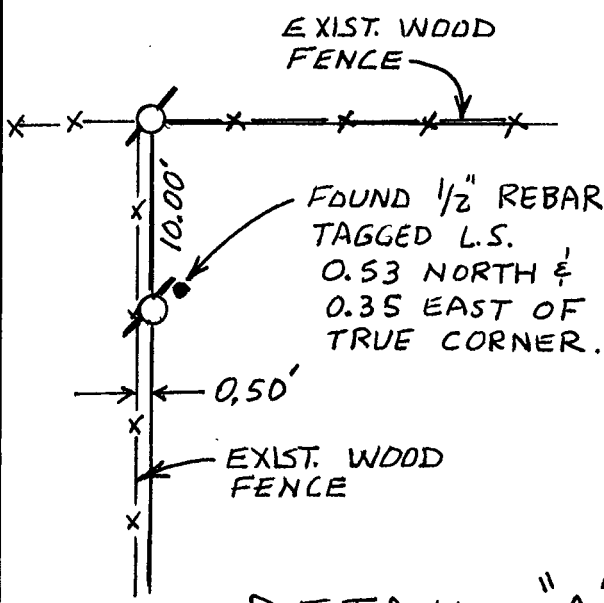
SCALE
1" = 100'



SEE DETAIL "A"

PARCEL "B"
33 P.M. 19

PARCEL 2
62 P.M. 10



DETAIL "A"
1" = 10'

