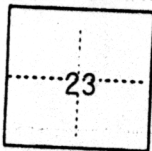


# CORNER RECORD

COUNTY OF Sacramento T. 10N R. 6E MDM MERIDIAN CALIFORNIA  
 CORNER TYPE: GOV'T. CORNER  MEANDER  RANCHO  CONTROL  OTHER  Property Corners  
 CORNER IDENTIFICATION — DATE OF VISIT November 22, 1985



LOT 118 CITRUS HEIGHTS ADDN. # 5

CORNER — LEFT AS FOUND  FOUND AND TAGGED  REESTABLISHED OBLITERATED CORNER  REBUILT

PHYSICAL DESCRIPTION OF CORNER FOUND; EVIDENCE AND METHOD USED TO IDENTIFY OR REESTABLISH

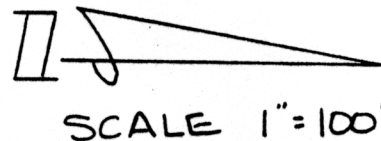
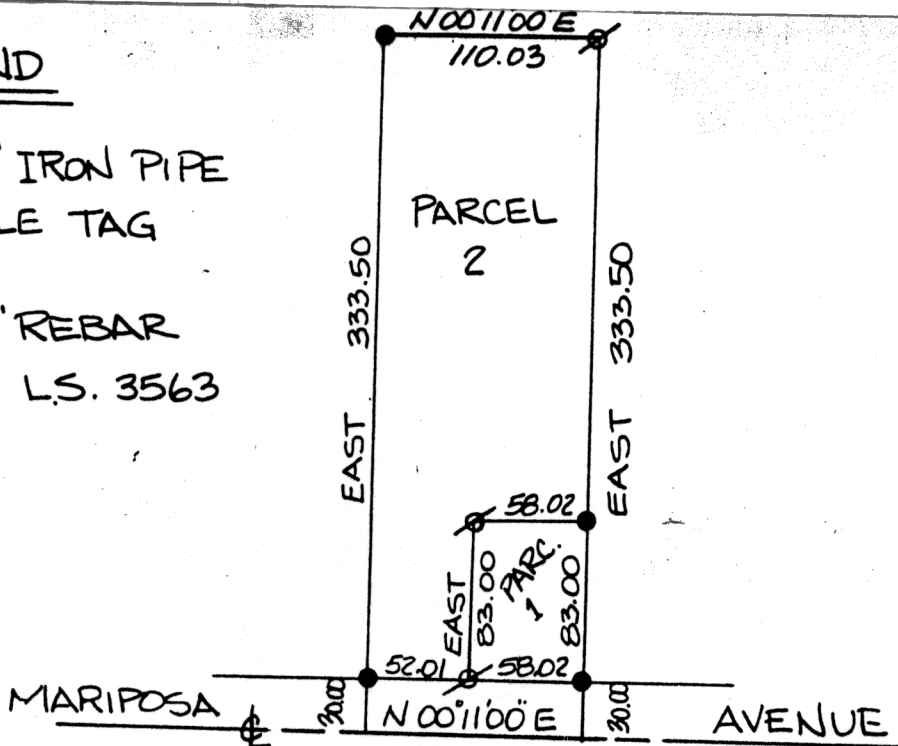
Found 3/4" iron pipe, illegible tag at the SE & SW corners of Parcel 2 and at the NE & NW corners of parcel 1 per Record of Survey 22 OS 32

PHYSICAL DESCRIPTION OF MONUMENTS REBUILT OR PERPETUATED

Set 3/4" rebar tagged LS 3563 at the NW corner of Parcel 2 and at the SW corner and SE corner at the east R/W line of Mariposa Avenue of Parcel 1 per Record of Survey 22 OS 32

## LEGEND

- Fd. 3/4" IRON PIPE  
ILLEGIBLE TAG
- ⊗ SET 3/4" REBAR  
TAGGED L.S. 3563

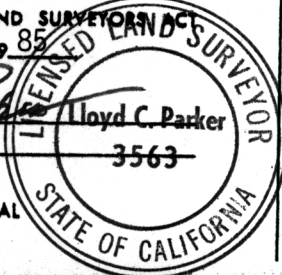


#5147

### SURVEYOR'S CERTIFICATE

THIS CORNER RECORD WAS PREPARED BY ME OR UNDER MY DIRECTION IN CONFORMANCE WITH THE LAND SURVEYING ACT  
 November 1985

SIGNED: Lloyd C. Parker  
 L.S. or R.C.E. No.: LS 3563



### COUNTY SURVEYOR'S CERTIFICATE

THE CORNER RECORD WAS RECEIVED Nov 27, 1985  
 AND EXAMINED AND FILED Dec 3, 1985

BY: L. Parker  
 TITLE: Surveying Engineering Tech

DOCUMENT No. 58

STATEMENT ON BACK OF SHEET

YES  NO