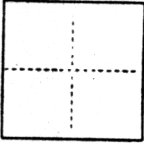


# CORNER RECORD

COUNTY OF Sacramento XX Section 18 XX Ranch Del Paso XXXXXX CALIFORNIA

CORNER TYPE: GOV'T. CORNER  MEANDER  RANCHO  CONTROL  OTHER  Property Corner  
 CORNER IDENTIFICATION — DATE OF VISIT \_\_\_\_\_ 19\_\_\_\_



CORNER — LEFT AS FOUND  FOUND AND TAGGED  REESTABLISHED OBLITERATED CORNER  REBUILT

PHYSICAL DESCRIPTION OF CORNER FOUND; EVIDENCE AND METHOD USED TO IDENTIFY OR REESTABLISH

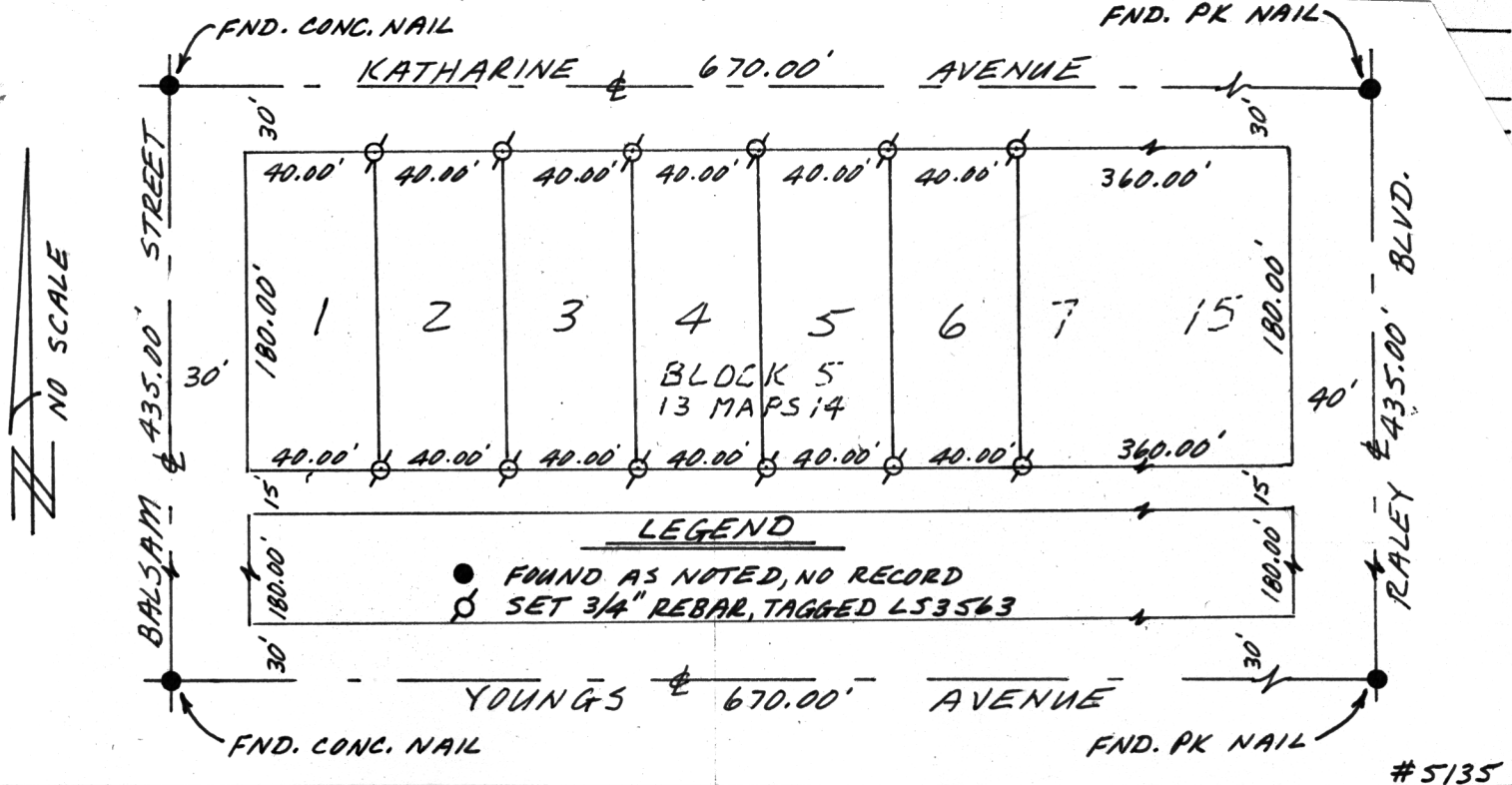
Found nails at street intersections, as noted in sketch, for corners of blocks 5 as shown on 13 maps 14.

YOUNGS HEIGHTS

PHYSICAL DESCRIPTION OF MONUMENTS REBUILT OR PERPETUATED

Set 3/4" Rebar, tagged LS3563, at corners of lots 1 thru 6, block 5, 13 Maps 14.

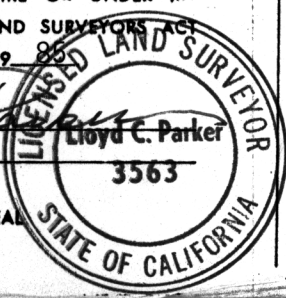
SKETCH: (Include reference tie or witness points, remarks and topo of area)



**SURVEYOR'S CERTIFICATE**

THIS CORNER RECORD WAS PREPARED BY ME OR UNDER MY DIRECTION IN CONFORMANCE WITH THE LAND SURVEYORS ACT  
 October 31 19 85

SIGNED: Lloyd C. Parker  
 L.S. or R.C.E. No.: LS3563



**COUNTY SURVEYOR'S CERTIFICATE**

THE CORNER RECORD WAS RECEIVED 11-5 19 85  
 AND EXAMINED AND FILED 11-5 19 85

BY: Barker  
 TITLE: Supervising Eng Seal

DOCUMENT No. 56

STATEMENT ON BACK OF SHEET

YES  NO