

Document Number 529

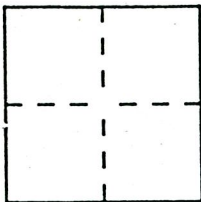
CORNER RECORD

Assessor Parcel Number _____

City of _____

County of SACRAMENTO, California

Brief Legal Description ALIGNMENT OF NEELY WAY, MATHER BLVD., MACREADY AVE AS SHOWN ON RECORD OF SURVEY FILED IN BOOK 5'S AT PAGE 27, SACRAMENTO COUNTY RECORDER



CORNER TYPE

Government Corner Control
 Meander Property
 Rancho Other
 Date of Survey _____

COORDINATES (Optional)

N. _____
 E. _____
 Zone _____ Datum _____
 Elev. _____

Corner — Left as found Found and tagged Established Reestablished Rebuilt

Identification and type of corner found: Evidence used to identify or procedure used to establish or reestablish the corner: MONUMENTS SET PER 55 RS 27 ALONG THE ALIGNMENT OF NEELY WAY, MACREADY AVENUE, AND MATHER BOULEVARD WERE TIED OUT PRIOR TO ROAD CONSTRUCTION. CERTAIN OF THOSE MONUMENT HAVE BEEN REESTABLISHED AS SHOWN.

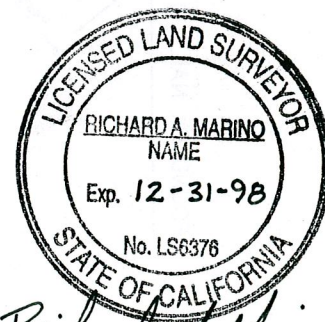
A description of the physical condition of the monument as found and as set or reset: ORIGINAL MONUMENT AT STA 10+00 NEELY WAY REMAINS IN GOOD CONDITION. ALL OTHERS WITHIN ALIGNMENT HAVE BEEN DESTROYED. REPLACED THOSE SHOWN WITH 2" Ø BRASS DISK IN WELL MONUMENT STAMPED "L.S. 6376"

SURVEYOR'S STATEMENT

This Corner Record was prepared by me or under my direction in conformance with the Land Surveyors' Act on NOVEMBER 15 1998.

Signed Richard A. Marino L.S. or R.C.E. Number 6376

Expiration Date 12/31/98



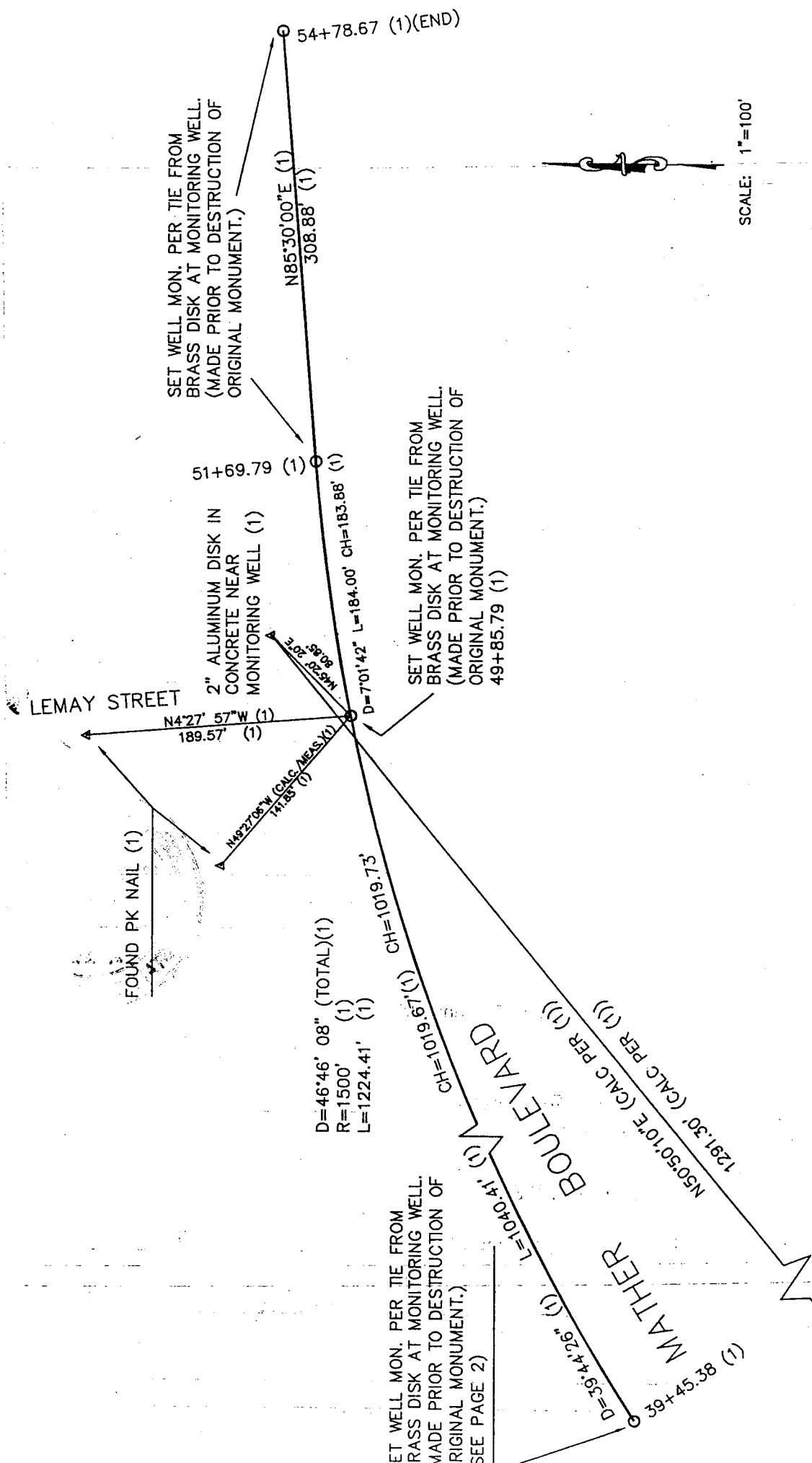
Richard A. Marino

COUNTY SURVEYOR'S STATEMENT

This Corner Record was received NOVEMBER 25, 1998 and examined and filed NOVEMBER 29, 1998.

Signed [Signature] For the County Surveyor

County Surveyor's Comment _____



- LEGEND:**
- O SET BRASS DISK IN MONUMENT WELL STAMPED L.S. 6376.
 - A FOUND MONUMENT AS NOTED.
 - (1) REFERENCE PER BOOK 55 OF SURVEYS AT PAGE 27, OFFICIAL RECORDS OF SACRAMENTO COUNTY.

2" ALUMINUM DISK IN CONCRETE NEAR MONITORING WELL (1)

SET WELL MON. PER TIE FROM BRASS DISK AT MONITORING WELL. MADE PRIOR TO DESTRUCTION OF ORIGINAL MONUMENT. SEE PAGE 2)