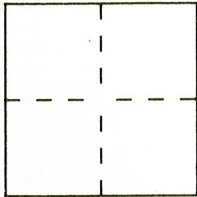


CORNER RECORD

Document Number 519

City of _____ County of SACRAMENTO, California

Brief Legal Description PARCEL B 82 P.M. 17



CORNER TYPE

COORDINATES
(Optional)

Government Corner Control
Meander Property
Rancho Other
Date of Survey JULY 8 1998

N. _____
E. _____
Zone _____ Datum _____
Elev. _____

Corner — Left as found Found and tagged Established Reestablished Rebuilt

Identification and type of corner found: Evidence used to identify or procedure used to establish or reestablish the corner:

SEE DIAGRAM ON PAGE 2

A description of the physical condition of the monument as found and as set or reset:

SEE DIAGRAM ON PAGE 2

SURVEYOR'S STATEMENT

This Corner Record was prepared by me or under my direction in conformance with the Land Surveyors' Act on AUGUST 8 19 98.

Signed Christopher R. Russell L.S. or R.C.E. Number 5696

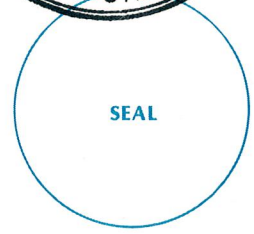


COUNTY SURVEYOR'S STATEMENT

This Corner Record was received AUGUST 11, 19 98 and examined

and filed AUGUST 11, 19 98.

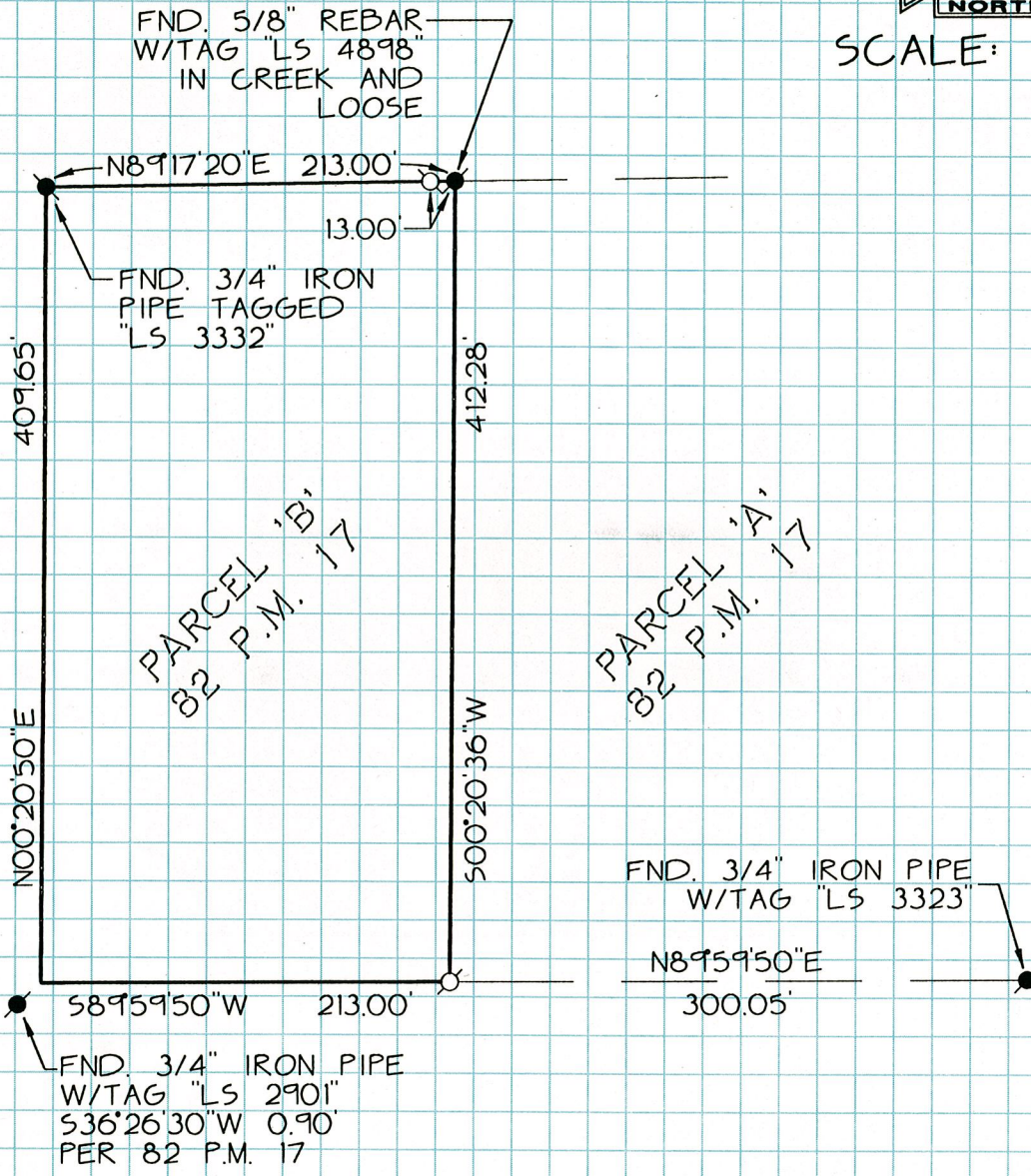
Signed Steve Parker Title Supervisor - Map Checking



County Surveyor's Comment _____



SCALE: 1"=100'



LEGEND

- FND. MONUMENT AS NOTED.....*
- SET 5/8" REBAR WITH
CAP "L.S. 5696".....o

JOB NO. 1016-00-566