

CORNER RECORD

COUNTY OF Sacramento T. Rancho Del Paso MERIDIAN CALIFORNIA

CORNER TYPE: GOV'T. CORNER MEANDER RANCHO CONTROL OTHER

CORNER IDENTIFICATION — DATE OF VISIT September 19 85



The NW & SW Corners of Lot 10 and the NE and SE corners of Lot 18 in Block 38 of North Sacramento Subdivision No. 8

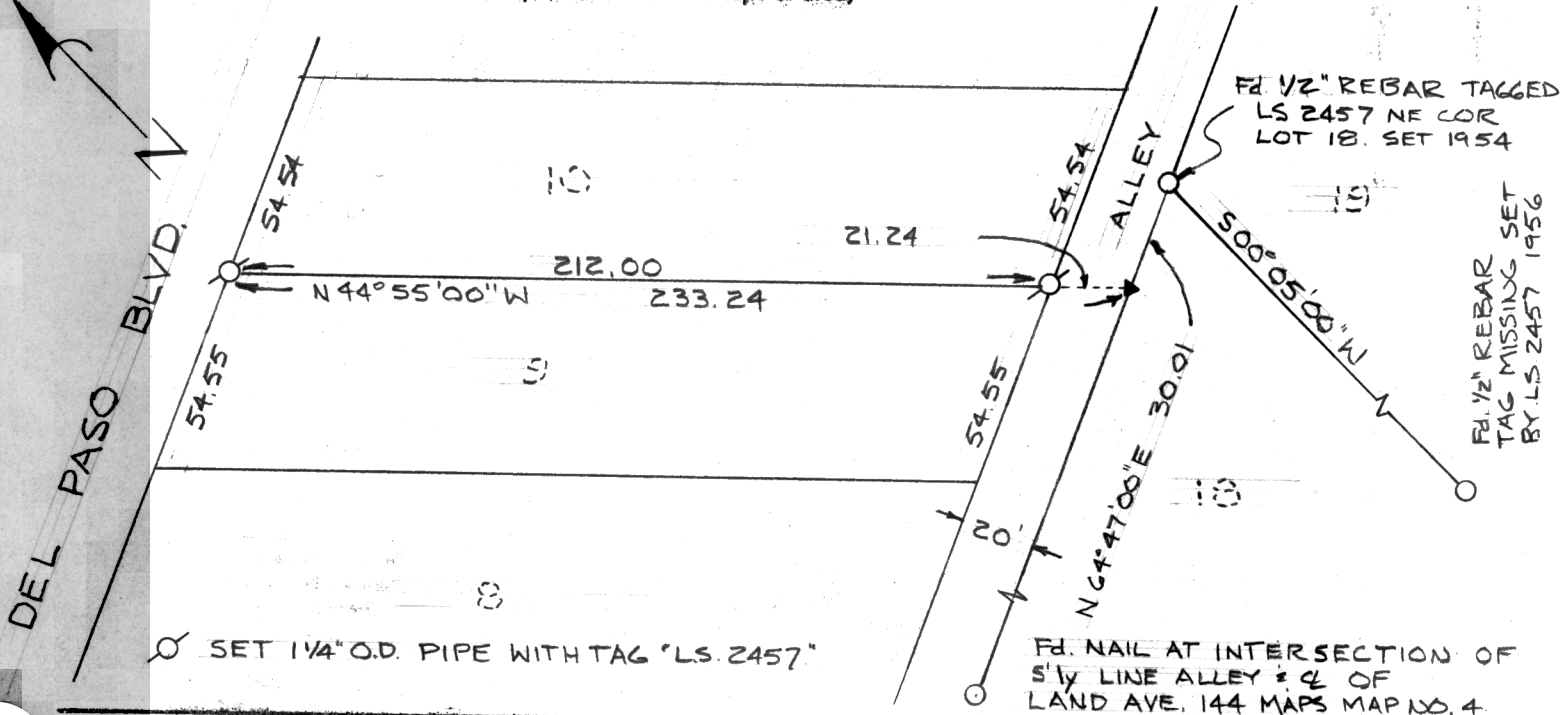
CORNER — LEFT AS FOUND FOUND AND TAGGED REESTABLISHED OBLITERATED CORNER REBUILT

PHYSICAL DESCRIPTION OF CORNER FOUND; EVIDENCE AND METHOD USED TO IDENTIFY OR REESTABLISH
 Corners found are as noted on sketch. Corners set were established from found monuments shown on sketch, existing improvements, and record information from the "Plat of North Sacramento Subdivision No. 8", filed in Book 19 of Maps, Map No. 10, Sacramento County, and "Plat of Cannon Industrial Park", filed in Book 144 of Maps, Map No. 4, Sacramento County.

PHYSICAL DESCRIPTION OF MONUMENTS; REBUILT OR PERPETUATED
 1 1/4" O.D. iron pipe monuments with tag "L.S. 2457" were set as shown on sketch.

CALIFORNIA COORDINATE SYSTEM ORDER: FIRST SECOND THIRD
 STATIONS USED: NGS (BSC & GS) STATE COUNTY OTHER STATION _____ STATION _____
 ZONE _____ ELEVATION _____ NORTHINGS (Y) _____ EASTINGS (X) _____

SKETCH: (Include reference to or witness points, remarks and topo of area)



SURVEYOR'S CERTIFICATE

THIS CORNER RECORD WAS PREPARED BY ME OR UNDER MY DIRECTION IN CONFORMANCE WITH THE LAND SURVEYORS ACT ON October 2, 19 85

SIGNED: Jonathan S. Dean
 L.S. or R.C.E. No. L.S. 2457

SEAL

COUNTY SURVEYOR'S CERTIFICATE

THE CORNER RECORD WAS RECEIVED _____ 19 _____ AND EXAMINED AND FILED _____ 19 _____

BY: _____ TITLE: _____

DOCUMENT No. 51

STATEMENT ON BACK OF SHEET

YES NO