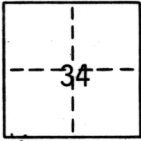


River Rock

CORNER RECORD

COUNTY OF Sacramento T. 10N R. 7E M.D.M. MERIDIAN CALIFORNIA
 CORNER TYPE: GOV'T. CORNER MEANDER RANCHO CONTROL OTHER property
 CORNER IDENTIFICATION - DATE OF VISIT August 29 19 85



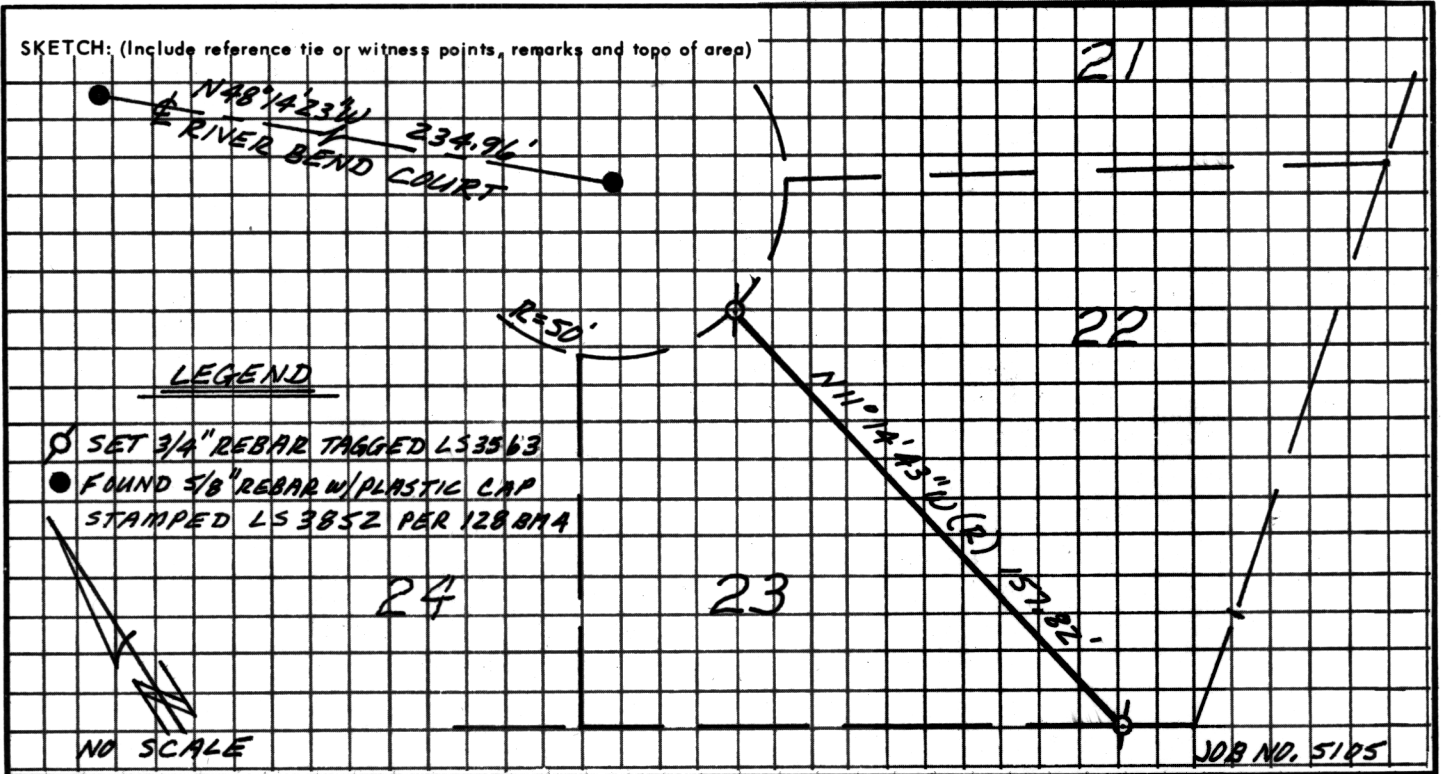
RIVER ROCK LOTS 22 & 23

CORNER - LEFT AS FOUND FOUND AND TAGGED REESTABLISHED OBLITERATED CORNER REBUILT

PHYSICAL DESCRIPTION OF CORNER FOUND: EVIDENCE AND METHOD USED TO IDENTIFY OR REESTABLISH _____
Found 5/8" rebar w/plastic cap stamped L.S. 3852 per 128 Maps 4 at the EC and
cul-de-sac of River Bend Court

PHYSICAL DESCRIPTION OF MONUMENTS REBUILT OR PERPETUATED _____
Set 3/4" rebar tagged L.S. 3563 at the corners common to Lots 22 and 23 per 128 Maps 4

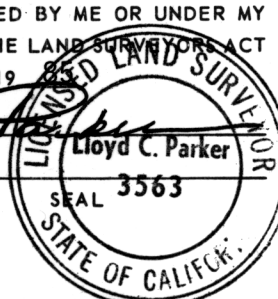
CALIFORNIA COORDINATE SYSTEM ORDER: FIRST SECOND THIRD
 STATIONS USED: NGS (USC & GS) STATE COUNTY OTHER STATION _____ STATION _____
 ZONE _____ ELEVATION _____ NORTHINGS (Y) _____ EASTINGS (X) _____



SURVEYOR'S CERTIFICATE

THIS CORNER RECORD WAS PREPARED BY ME OR UNDER MY DIRECTION IN CONFORMANCE WITH THE LAND SURVEYOR ACT ON September 19 85

SIGNED: Lloyd C. Parker
 L.S. or R.C.E. No.: L.S. 3563



COUNTY SURVEYOR'S CERTIFICATE

THIS CORNER RECORD WAS RECEIVED 9-9 1985 AND EXAMINED AND FILED 19-24 1985

BY: [Signature]
 TITLE: Surveying Engineer, 2nd
 DOCUMENT No. 50
 STATEMENT ON BACK OF SHEET

YES NO