

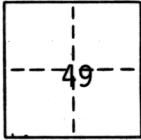
Hillsdale #12

CORNER RECORD

COUNTY OF Sacramento Rancho De l Paso MERIDIAN CALIFORNIA

CORNER TYPE: GOV'T. CORNER MEANDER RANCHO CONTROL OTHER property

CORNER IDENTIFICATION - DATE OF VISIT September 4, 19 85



HILLSDALE #12 LOT 53

CORNER - LEFT AS FOUND FOUND AND TAGGED REESTABLISHED OBLITERATED CORNER REBUILT

PHYSICAL DESCRIPTION OF CORNER FOUND: EVIDENCE AND METHOD USED TO IDENTIFY OR REESTABLISH _____

Found 3/4" I.P. at the intersection of Tamarisk Court and Sagebrush Way and at the center of cul-de-sac Tamarisk Court, no tag, per 98 Maps 19.

PHYSICAL DESCRIPTION OF MONUMENTS REBUILT OR PERPETUATED _____

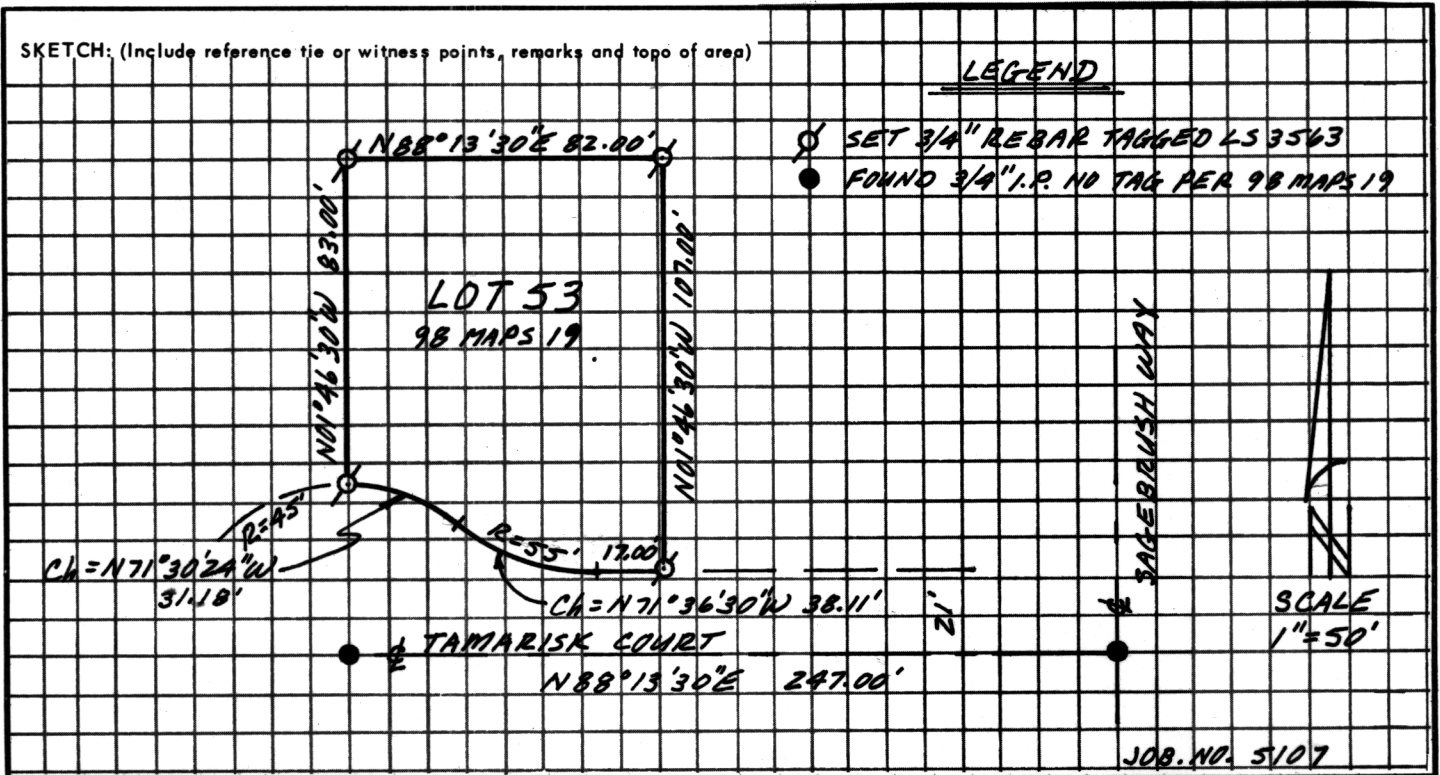
Set 3/4" rebar at the corners of Lot 53, 98 Maps 19

CALIFORNIA COORDINATE SYSTEM ORDER: FIRST SECOND THIRD

STATIONS USED: NGS (USC & GS) STATE COUNTY OTHER STATION _____ STATION _____

ZONE _____ ELEVATION _____ NORTHINGS (Y) _____ EASTINGS (X) _____

SKETCH: (Include reference tie or witness points, remarks and topo of area)



SURVEYOR'S CERTIFICATE

THIS CORNER RECORD WAS PREPARED BY ME OR UNDER MY DIRECTION IN CONFORMANCE WITH THE LAND SURVEY ACT ON September 19 85

SIGNED: _____

L.S. or R.C.E. No.: L.S. 3563



COUNTY SURVEYOR'S CERTIFICATE

THIS CORNER RECORD WAS RECEIVED 9-9 1985 AND EXAMINED AND FILED 9-24 19 85

BY: _____

TITLE: Supervising Engineering Geol

DOCUMENT No. 49

STATEMENT ON BACK OF SHEET

YES NO