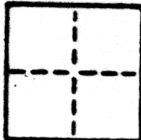


# CORNER RECORD

COUNTY OF Sacramento T. \_\_\_\_\_ R. \_\_\_\_\_ MERIDIAN \_\_\_\_\_ CALIFORNIA

CORNER TYPE: GOVT. CORNER  MEANDER  RANCHO  CONTROL  OTHER

CORNER IDENTIFICATION — DATE OF VISIT \_\_\_\_\_ 19\_\_\_\_



Portion of Lots 149 and 150, Sheffield Estates Unit No. 3, (53B.M.23).

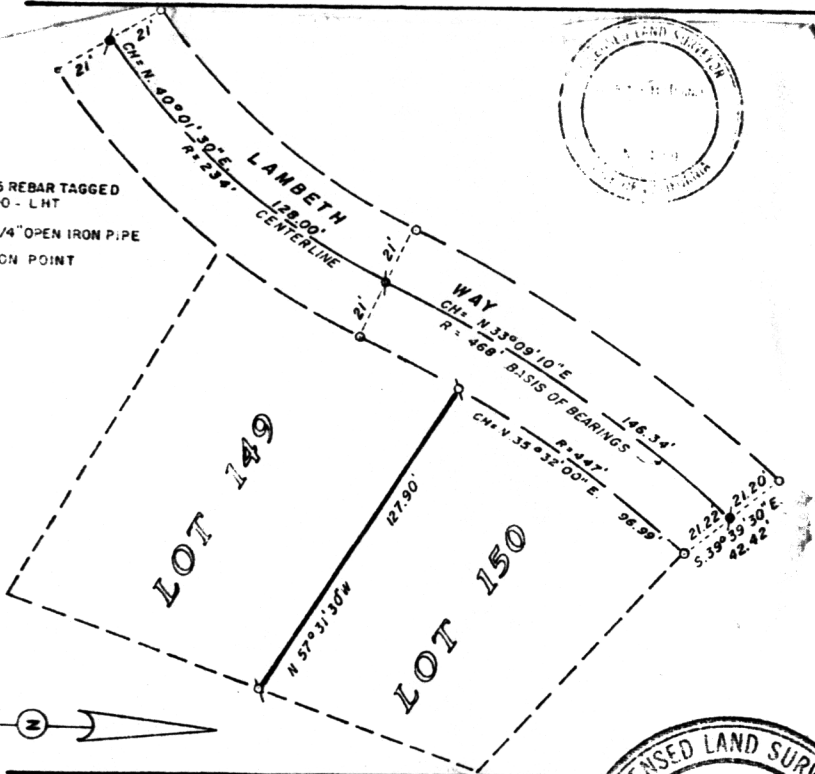
CORNER — LEFT AS FOUND  FOUND AND TAGGED  REESTABLISHED OBLITERATED CORNER  RESULT

PHYSICAL DESCRIPTION OF CORNER FOUND; EVIDENCE AND METHOD USED TO IDENTIFY OR REESTABLISH

PHYSICAL DESCRIPTION OF MONUMENTS RESULT OR PERPETUATED

CALIFORNIA COORDINATE SYSTEM ORDER: FIRST  SECOND  THIRD   
 STATIONS USED: NGS (USC & GS)  STATE  COUNTY  OTHER  STATION \_\_\_\_\_ STATION \_\_\_\_\_  
 ZONE \_\_\_\_\_ ELEVATION \_\_\_\_\_ NORTHINGS (Y) \_\_\_\_\_ EASTINGS (X) \_\_\_\_\_

- LEGEND
- SET NO. 5 REBAR TAGGED L.S. 4900 - LHT
  - FOUND 3/4" OPEN IRON PIPE
  - DIMENSION POINT



**SURVEYOR'S CERTIFICATE**  
 THIS CORNER RECORD WAS PREPARED BY ME OR UNDER MY DIRECTION IN CONFORMANCE WITH THE LAND SURVEYORS ACT ON August 21, 1985 19\_\_\_\_

SIGNED: Laurence H. Turner No. 4900

L.S. ~~XXXXXX~~ 4900

**COUNTY SURVEYOR'S CERTIFICATE**  
 THE CORNER RECORD WAS RECEIVED 8-23 1985  
 AND EXAMINED AND FILED 8-29 1985  
 BY: Stan Baker  
 TITLE: Surveying Engineer

DOCUMENT No. 47

SEAL

STATEMENT ON BACK OF SHEET

YES  NO