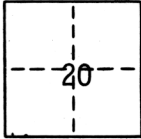


CORNER RECORD

COUNTY OF Sacramento T. 10 N R. 5E MDM MERIDIAN CALIFORNIA

CORNER TYPE: GOV'T. CORNER MEANDER RANCHO CONTROL OTHER Property Corner
 CORNER IDENTIFICATION - DATE OF VISIT July 31, 1985



CORNER - LEFT AS FOUND FOUND AND TAGGED REESTABLISHED OBLITERATED CORNER REBUILT

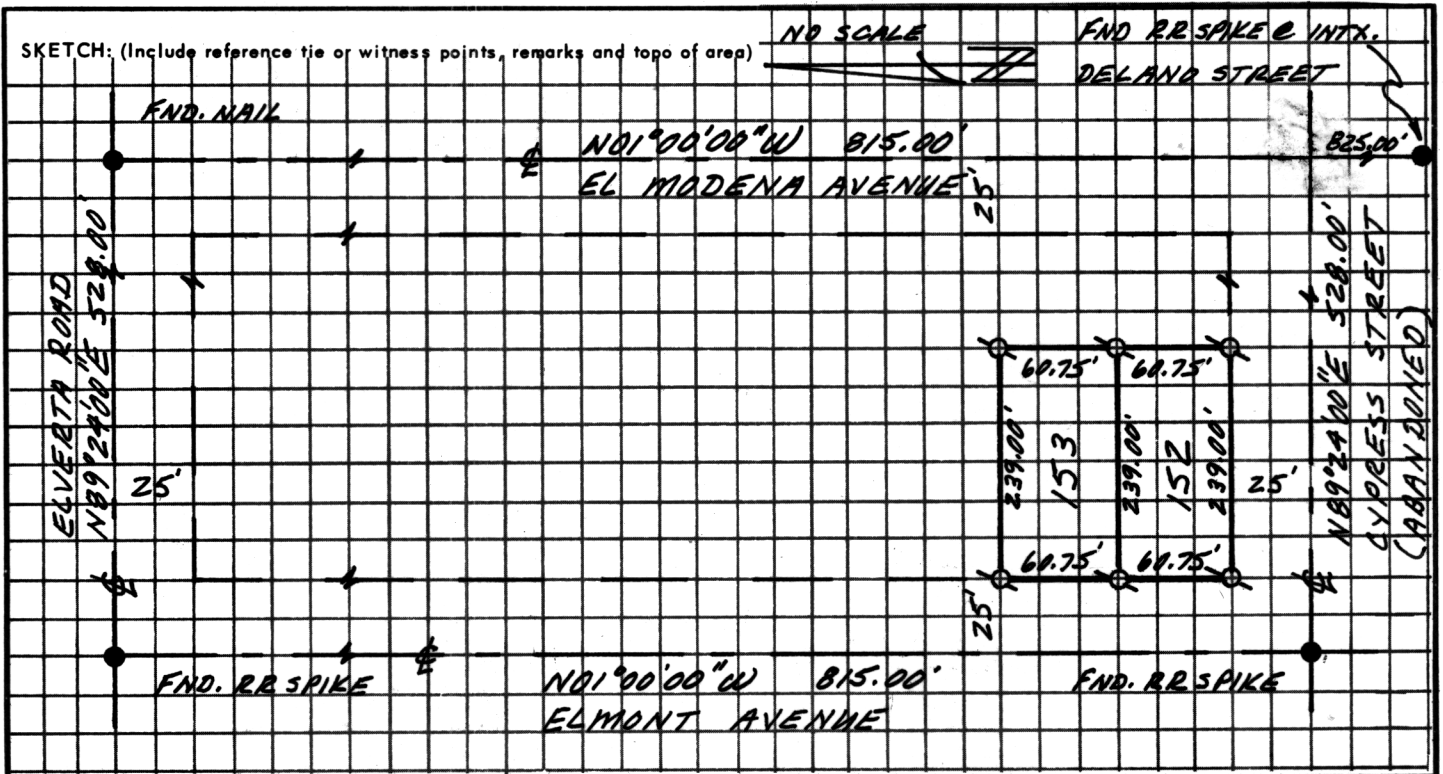
PHYSICAL DESCRIPTION OF CORNER FOUND: EVIDENCE AND METHOD USED TO IDENTIFY OR REESTABLISH _____

Found centerline intersections as shown

PHYSICAL DESCRIPTION OF MONUMENTS REBUILT OR PERPETUATED _____

Set 3/4" rebar tagged LS3563 for the corners of Lots 152 and 153 as shown on the "Plat of Elverta" 8 Maps 40

CALIFORNIA COORDINATE SYSTEM ORDER: FIRST SECOND THIRD
 STATIONS USED: NGS (USC & GS) STATE COUNTY OTHER STATION _____ STATION _____
 ZONE _____ ELEVATION _____ NORTHINGS (Y) _____ EASTINGS (X) _____



SURVEYOR'S CERTIFICATE

THIS CORNER RECORD WAS PREPARED BY ME OR UNDER MY DIRECTION IN CONFORMANCE WITH THE LAND SURVEYORS ACT ON July 31, 1985

SIGNED: Lloyd C. Parker
 LICENSED LAND SURVEYOR
 Lloyd C. Parker
 SEAL 3563

L.S. or R.C.E. No.: LS3563

COUNTY SURVEYOR'S CERTIFICATE

THIS CORNER RECORD WAS RECEIVED Aug 8, 1985 AND EXAMINED AND FILED Aug 8, 1985

BY: [Signature]
 TITLE: Surveying Engineer

DOCUMENT No. 11
 STATEMENT ON BACK OF SHEET

YES NO