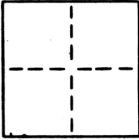


CORNER RECORD

COUNTY OF Sacramento ~~XXX~~ Section 37 ~~XXX~~ Rancho Del Paso ~~XXXXXXX~~ CALIFORNIA

CORNER TYPE: GOV'T. CORNER MEANDER RANCHO CONTROL OTHER PROPERTY CORNER
 CORNER IDENTIFICATION - DATE OF VISIT July 17 19 85

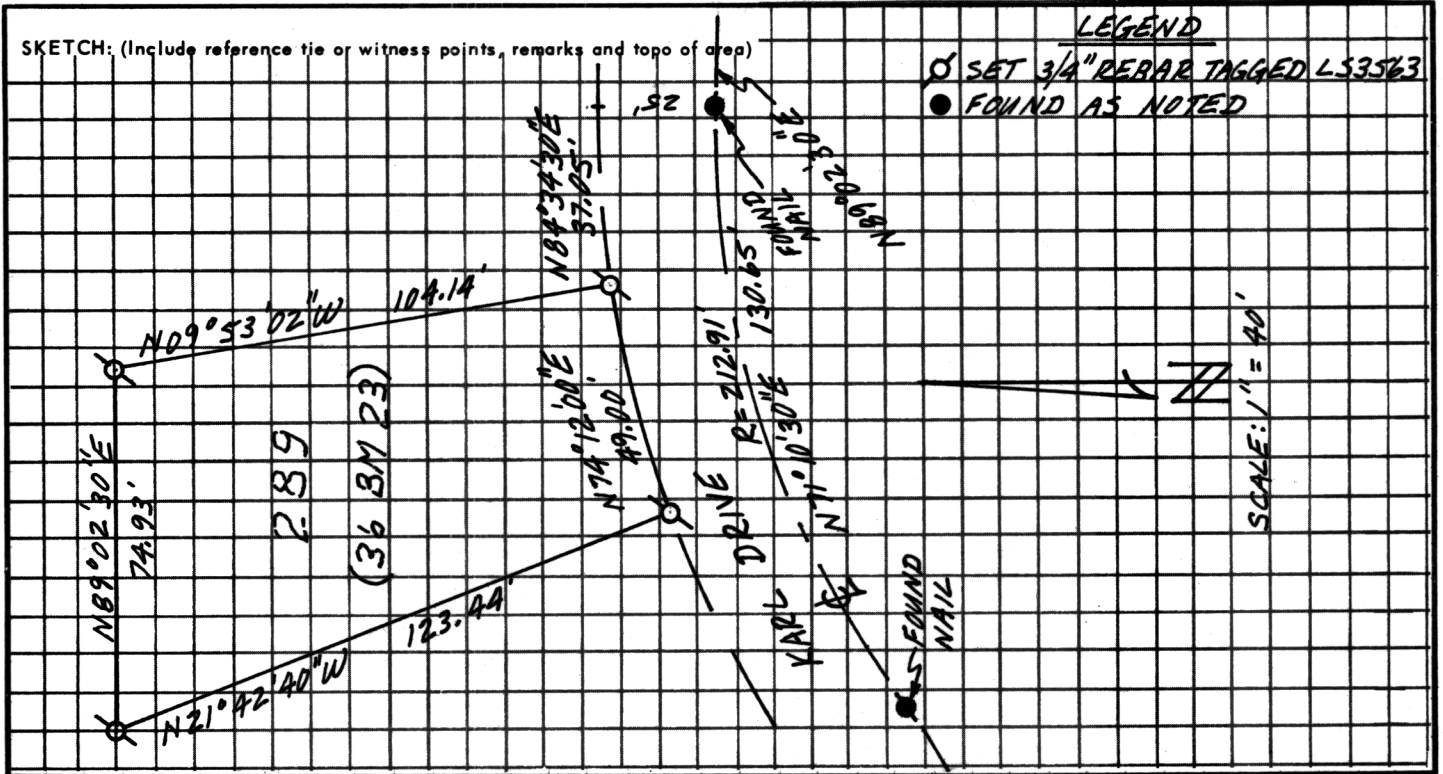


CORNER - LEFT AS FOUND FOUND AND TAGGED REESTABLISHED OBLITERATED CORNER REBUILT

PHYSICAL DESCRIPTION OF CORNER FOUND: EVIDENCE AND METHOD USED TO IDENTIFY OR REESTABLISH _____
 Found concrete nails in the centerline of Karl Drive, nails are
 not of record.

PHYSICAL DESCRIPTION OF MONUMENTS REBUILT OR PERPETUATED _____
 Set 3/4" rebar tagged L.S. 3563 for the corners of Lot 289, 36 Maps 23.
MISSION RANCHO #2

CALIFORNIA COORDINATE SYSTEM ORDER: FIRST SECOND THIRD
 STATIONS USED: NGS (USC & GS) STATE COUNTY OTHER STATION _____ STATION _____
 ZONE _____ ELEVATION _____ NORTHINGS (Y) _____ EASTINGS (X) _____

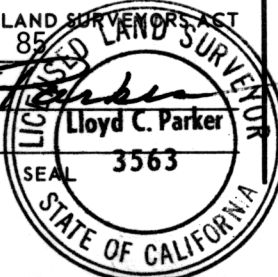


SURVEYOR'S CERTIFICATE

THIS CORNER RECORD WAS PREPARED BY ME OR UNDER MY DIRECTION IN CONFORMANCE WITH THE LAND SURVEYOR'S ACT ON July 17 19 85

SIGNED: _____

L.S. or R.C.E. No.: L.S. 3563



COUNTY SURVEYOR'S CERTIFICATE

THIS CORNER RECORD WAS RECEIVED July 23, 19 85
 AND EXAMINED AND FILED July 23, 19 85

BY: _____

TITLE: Supervising Engineering Geol.

DOCUMENT No. A3
 STATEMENT ON BACK OF SHEET

YES NO