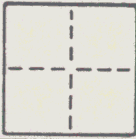


# CORNER RECORD

COUNTY OF Sacramento T. 9N R. 4E Mount Diablo MERIDIAN CALIFORNIA

CORNER TYPE: GOVT. CORNER  MEANDER  RANCHO  CONTROL  OTHER

CORNER IDENTIFICATION — DATE OF VISIT 1985



NW corner of lot 38, NW corner of lot 46, point on the West line of lot 46, and N.R.S. 5, NATOMAS RIVERSIDE SUBDIVISION NO. 2

CORNER — LEFT AS FOUND  FOUND AND TAGGED  REESTABLISHED OBLITERATED CORNER  REBUILT

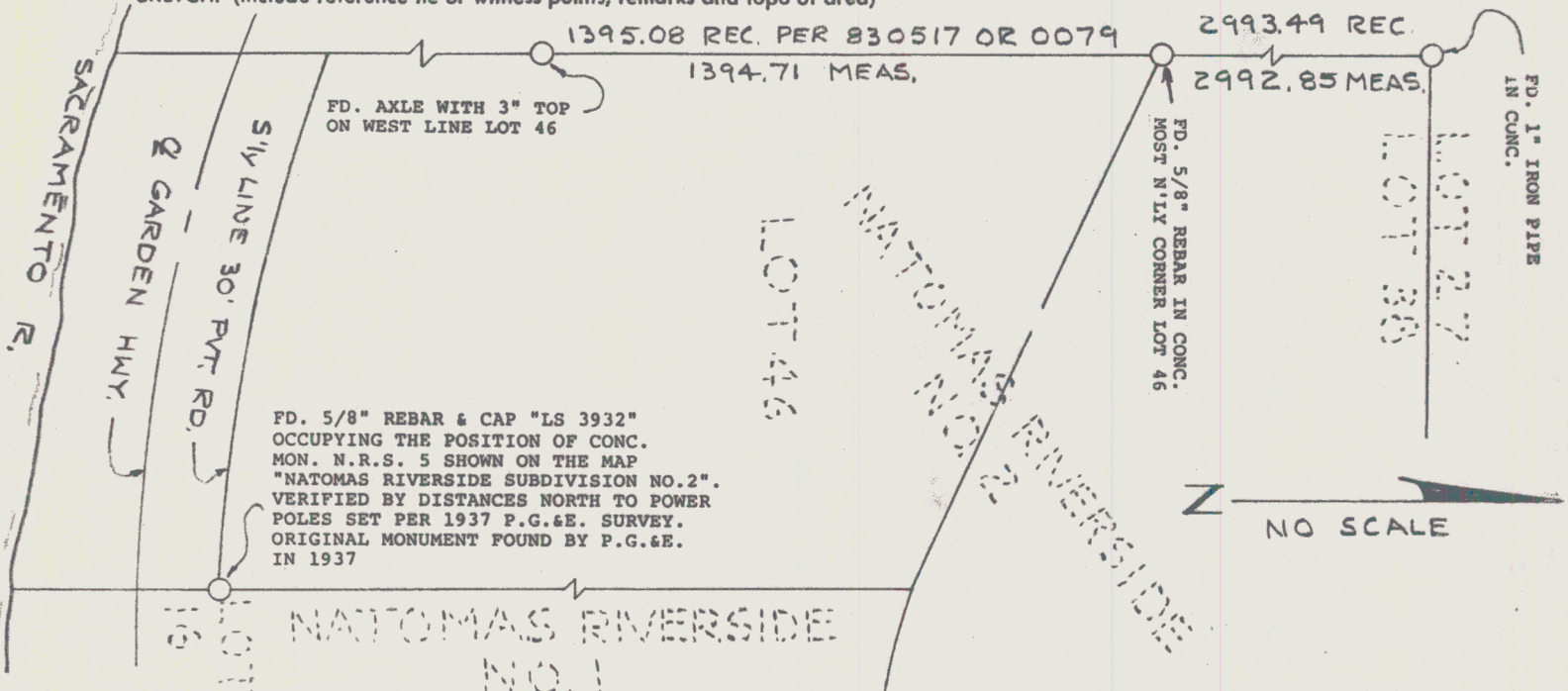
**PHYSICAL DESCRIPTION OF CORNER FOUND; EVIDENCE AND METHOD USED TO IDENTIFY OR REESTABLISH**

Monuments were found as noted on the sketch below. Identification was made per map titled "NATOMAS RIVERSIDE SUBDIVISION NO. 2" filed February 26, 1918 in Book 15 of Maps at page 41 in the Office of the County Recorder of Sacramento County, an unrecorded 1937 P.G. & E. survey, and 830517 OR 0079.

**PHYSICAL DESCRIPTION OF MONUMENTS REBUILT OR PERPETUATED**

CALIFORNIA COORDINATE SYSTEM ORDER: FIRST  SECOND  THIRD   
 STATIONS USED: NGS (USC & GS)  STATE  COUNTY  OTHER  STATION \_\_\_\_\_ STATION \_\_\_\_\_  
 ZONE \_\_\_\_\_ ELEVATION \_\_\_\_\_ NORTHINGS (Y) \_\_\_\_\_ EASTINGS (X) \_\_\_\_\_

**SKETCH: (Include reference tie or witness point:, remarks and topo of area)**



FD. 5/8" REBAR & CAP "LS 3932" OCCUPYING THE POSITION OF CONC. MON. N.R.S. 5 SHOWN ON THE MAP "NATOMAS RIVERSIDE SUBDIVISION NO. 2". VERIFIED BY DISTANCES NORTH TO POWER POLES SET PER 1937 P.G.&E. SURVEY. ORIGINAL MONUMENT FOUND BY P.G.&E. IN 1937

**SURVEYOR'S CERTIFICATE**

THIS CORNER RECORD WAS PREPARED BY ME OR UNDER MY DIRECTION IN CONFORMANCE WITH THE LAND SURVEYORS ACT ON June 21, 1985

SIGNED: J. M. ...

L.S. or R.C.E. No.: LS-2457

SEAL

**COUNTY SURVEYOR'S CERTIFICATE**

THE CORNER RECORD WAS RECEIVED \_\_\_\_\_ 19\_\_\_\_ AND EXAMINED AND FILED \_\_\_\_\_ 19\_\_\_\_

BY: \_\_\_\_\_

TITLE: \_\_\_\_\_

DOCUMENT No. 35

STATEMENT ON BACK OF SHEET

YES  NO