

CORNER RECORD

CITY AND

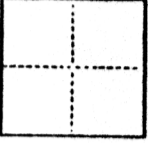
COUNTY OF SACRAMENTO T. _____ R. _____

MERIDIAN

CALIFORNIA

CORNER TYPE: GOV'T. CORNER MEANDER RANCHO CONTROL OTHER

CORNER IDENTIFICATION — DATE OF VISIT _____ 19____



PORTION OF "NORTHGATE UNIT NO. 5", (60B.M.4), WHICH IS A PORTION OF:
SECTIONS 24 & 25, T. 9 N., R. 4 E., & PORTION OF SECTIONS 19 & 30, T. 9 N., R. 5 E.,
M.D.B.&M.

CORNER — LEFT AS FOUND FOUND AND TAGGED REESTABLISHED OBLITERATED CORNER RESULT

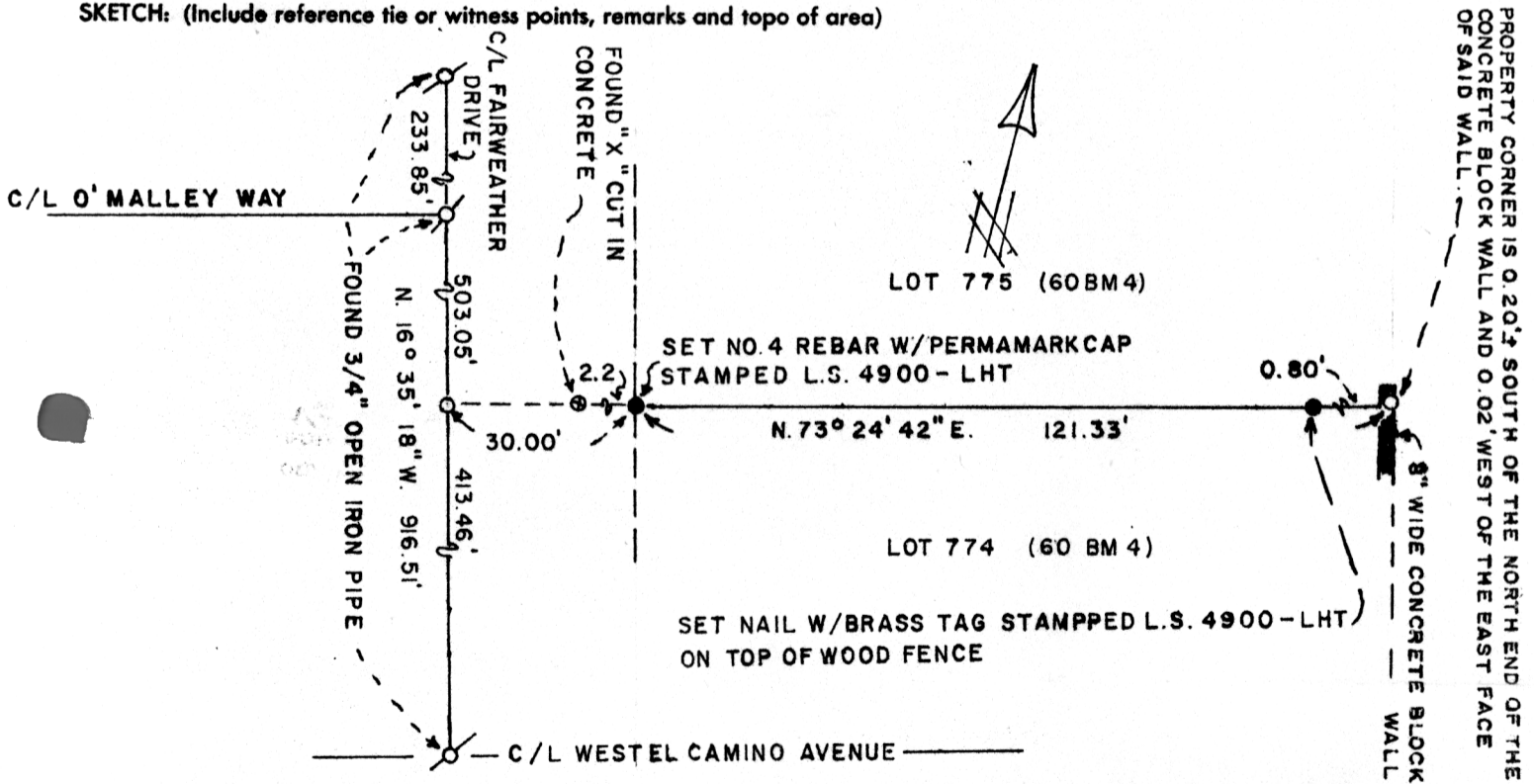
PHYSICAL DESCRIPTION OF CORNER FOUND, EVIDENCE AND METHOD USED TO IDENTIFY OR REESTABLISH

PHYSICAL DESCRIPTION OF MONUMENTS RESULT OR PERPETUATED

CALIFORNIA COORDINATE SYSTEM ORDER: FIRST SECOND THIRD
STATIONS USED: NGS (USC & GS) STATE COUNTY OTHER STATION _____ STATION _____
ZONE _____ ELEVATION _____ NORTHINGS (Y) _____ EASTINGS (X) _____

(Fold)

SKETCH: (Include reference tie or witness points, remarks and topo of area)



SURVEYOR'S CERTIFICATE

THIS CORNER RECORD WAS PREPARED BY ME UNDER DIRECTION IN CONFORMANCE WITH THE LAND SURVEYORS' ACT ON JUNE 5th 1985

SIGNED: Laurence H. Turner

L.S. or R.C.E. No.: 4900



COUNTY SURVEYOR'S CERTIFICATE

THE CORNER RECORD WAS RECEIVED 6-12 1985 AND EXAMINED AND FILED 6-12 1985

BY: Banker TITLE: Surveying Eng Cert

DOCUMENT No. 34

STATEMENT ON BACK OF SHEET

YES NO