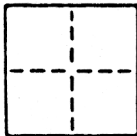


CORNER RECORD

COUNTY OF Sacramento T. 8 N R. 5 E Mt. Diablo MERIDIAN CALIFORNIA

CORNER TYPE: GOVT. CORNER MEANDER RANCHO CONTROL OTHER
 CORNER IDENTIFICATION — DATE OF VISIT May 3, 1985



FOUND IRON PIPE MONS., PER SKETCH
 IN A PORTION OF LOTS 14 & 15, Florin Addition

CORNER — LEFT AS FOUND FOUND AND TAGGED REESTABLISHED OBLITERATED CORNER REBUILT

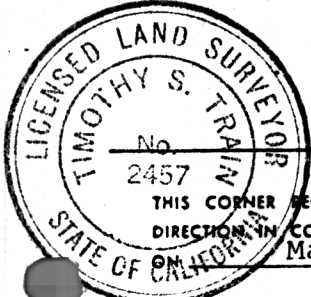
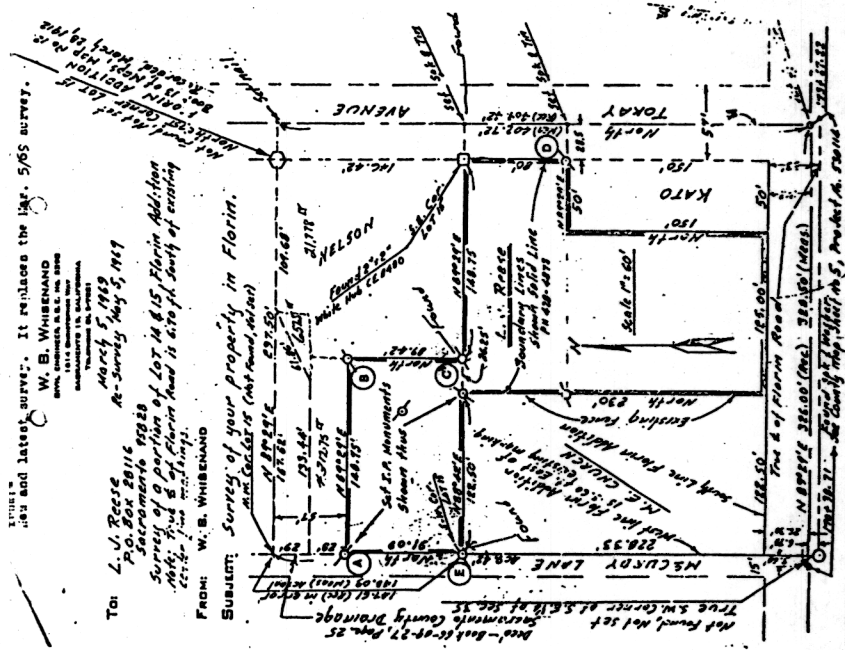
PHYSICAL DESCRIPTION OF CORNER FOUND; EVIDENCE AND METHOD USED TO IDENTIFY OR REESTABLISH
 A Fnd. 1" i.d. pipe - no tag. (Measured A to B 148.66')
 B " " " " " " (Measured B to C 89.20')
 C " " " " " " (Measured C to E 148.54')
 D " 3/4" " " - tagged RCE 5290.
 E Fnd. 1" i.d. pipe - no tag. (Measured A to E 90.79')

PHYSICAL DESCRIPTION OF MONUMENTS REBUILT OR PERPETUATED

CALIFORNIA COORDINATE SYSTEM ORDER: FIRST SECOND THIRD
 STATIONS USED: NGS (USC & GS) STATE COUNTY OTHER STATION _____ STATION _____
 ZONE _____ ELEVATION _____ NORTHINGS (Y) _____ EASTINGS (X) _____

SKETCH: (Include reference tie or witness points, remarks and topo of area)

A reduction of a 8 1/2" x 11" sketch in possession of Tom Davis (Owner).
 Circled letters A to E added.



SURVEYOR'S CERTIFICATE
 THIS CORNER RECORD WAS PREPARED BY ME OR UNDER MY DIRECTION IN CONFORMANCE WITH THE LAND SURVEYORS ACT
 May 7 1985
 SIGNED: Timothy S. Train
 L.S. or R.C.E. No.: L.S. No. 2457

COUNTY SURVEYOR'S CERTIFICATE
 THE CORNER RECORD WAS RECEIVED 6-11 19 85
 AND EXAMINED AND FILED 6-12 19 85
 BY: [Signature]
 TITLE: Surveying Eng. Tech
 DOCUMENT No. 33

STATEMENT ON BACK OF SHEET YES NO