

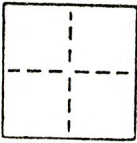
CORNER RECORD

329

COUNTY OF SACRAMENTO

CORNER TYPE: GOVT. CORNER MEANDER RANCHO CONTROL OTHER MERIDIAN CALIFORNIA

CORNER IDENTIFICATION - DATE OF VISIT AUGUST 1, 1991



PARCEL "B" PER 15 PM 50

CORNER - LEFT AS FOUND FOUND AND TAGGED REESTABLISHED OBLITERATED CORNER RESULT

PHYSICAL DESCRIPTION OF CORNER FOUND; EVIDENCE AND METHOD USED TO IDENTIFY OR REESTABLISH

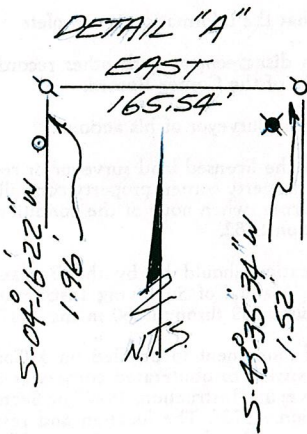
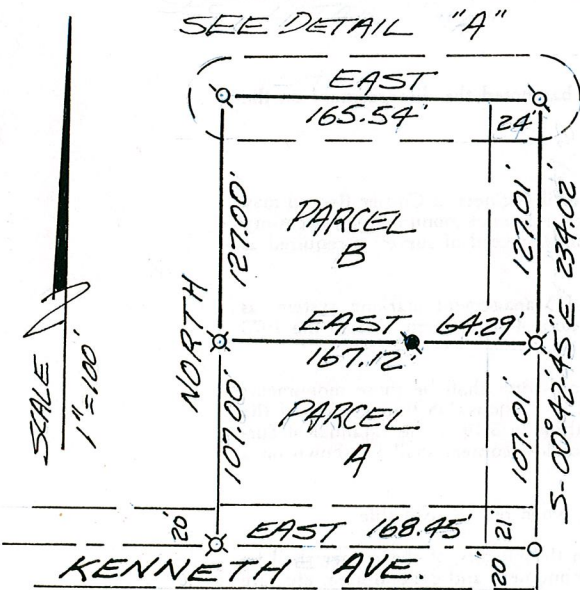
SEE SKETCH

PHYSICAL DESCRIPTION OF MONUMENTS REBUILT OR PERPETUATED

SEE SKETCH

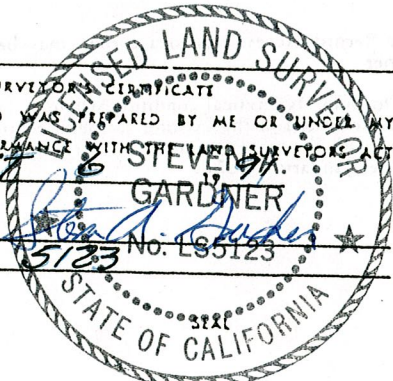
CALIFORNIA COORDINATE SYSTEM ORDER: FIRST SECOND THIRD
STATIONS USED: NGS (USC & GS) STATE COUNTY OTHER STATION _____
ZONE _____ ELEVATION _____ NORTHINGS (N) _____ EASTINGS (E) _____

SKETCH: (Include reference tie or witness points, remarks and topo of area)



LEGEND

- ⊗ = FND 1/2" RB, NO TAG
- ⊙ = FND 3/4" IP, NO TAG
- ⊗ = FND 1" STEEL PIN, NO TAG
- = DIMENSION POINT
- ⊗ = SET 3/4" RB, LS 5123
- = SET 40d SPIKE



SURVEYOR'S CERTIFICATE
THIS CORNER RECORD WAS PREPARED BY ME OR UNDER MY DIRECTION IN CONFORMANCE WITH THE LAND SURVEYOR ACT ON AUGUST 1, 1991

SIGNED: Steven A. Gardner
L.S. or R.C.E. No.: 5123 No. LS5123

COUNTY SURVEYOR'S CERTIFICATE
THE CORNER RECORD WAS RECEIVED AUG 14, 1991 AND EXAMINED AND FILED AUG 15, 1991

BY: David Parker
TITLE: Supervising Engineer, Jahn
DOCUMENT No. 329

STATEMENT ON BACK OF SHEET

YES NO