

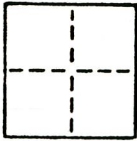
CORNER RECORD

309

COUNTY OF Sacramento T. _____ R. _____ MERIDIAN CALIFORNIA

CORNER TYPE: GOVT. CORNER MEANDER RANCHO CONTROL OTHER

CORNER IDENTIFICATION - DATE OF VISIT 11-1 1990



NW CORNER PARCEL MAP 76-4

CORNER - LEFT AS FOUND FOUND AND TAGGED REESTABLISHED OBLITERATED CORNER REBUILT

PHYSICAL DESCRIPTION OF CORNER FOUND; EVIDENCE AND METHOD USED TO IDENTIFY OR REESTABLISH

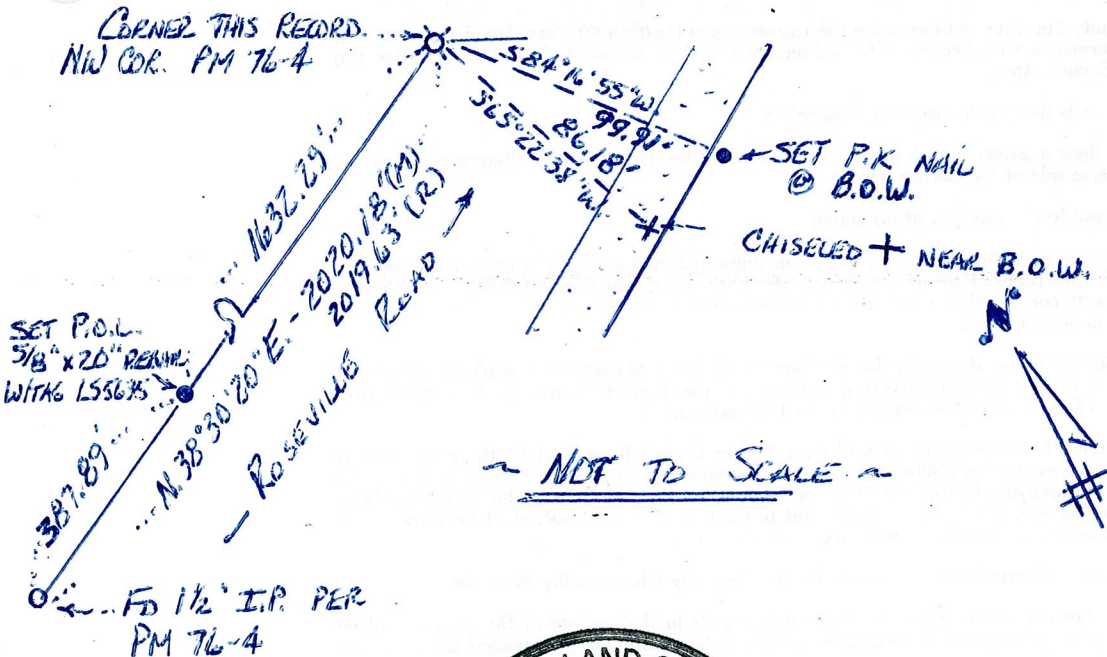
Found 1 1/2" Iron Pipe Tagged with L.S. 2651 Brass Washer and Tack. Pipe was bent over and in my attempt to straighten it, it broke off.

PHYSICAL DESCRIPTION OF MONUMENTS REBUILT OR PERPETUATED

Set In the center of the remaining portion of pipe in the ground, I drove a 5/8" x 24" rebar flush to the ground and tagged with a copper wire and brass washer marked L.S. 5635.

CALIFORNIA COORDINATE SYSTEM ORDER: FIRST SECOND THIRD
STATIONS USED: NGS (USC & GS) STATE COUNTY OTHER STATION _____ STATION _____
ZONE _____ ELEVATION _____ NORTHINGS (Y) _____ EASTINGS (X) _____

SKETCH: (Include reference tie or witness points, remarks and topo of area)



SURVEYED AND DRAWN BY ME OR UNDER MY DIRECTION IN CONFORMANCE WITH THE LAND SURVEYORS ACT ON 11-1-90

SIGNED: _____
L.S. or R.C.E. No.: _____



COUNTY SURVEYOR'S CERTIFICATE

THE CORNER RECORD WAS RECEIVED NOV. 6, 1990 AND EXAMINED AND FILED NOV 8 19 90

BY: [Signature] TITLE: Supervising Engineering Tech

DOCUMENT No. 309

STATEMENT ON BACK OF SHEET

YES NO