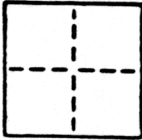


CORNER RECORD

COUNTY OF SACRAMENTO T. _____ R. _____ MERIDIAN _____ CALIFORNIA

CORNER TYPE: GOVT. CORNER MEANDER RANCHO CONTROL OTHER

CORNER IDENTIFICATION — DATE OF VISIT JULY 26 1990



LOT 243 OF ARDEN OAKS #5, 29 BM 16.

CORNER — LEFT AS FOUND FOUND AND TAGGED REESTABLISHED OBLITERATED CORNER REBUILT

PHYSICAL DESCRIPTION OF CORNER FOUND; EVIDENCE AND METHOD USED TO IDENTIFY OR REESTABLISH

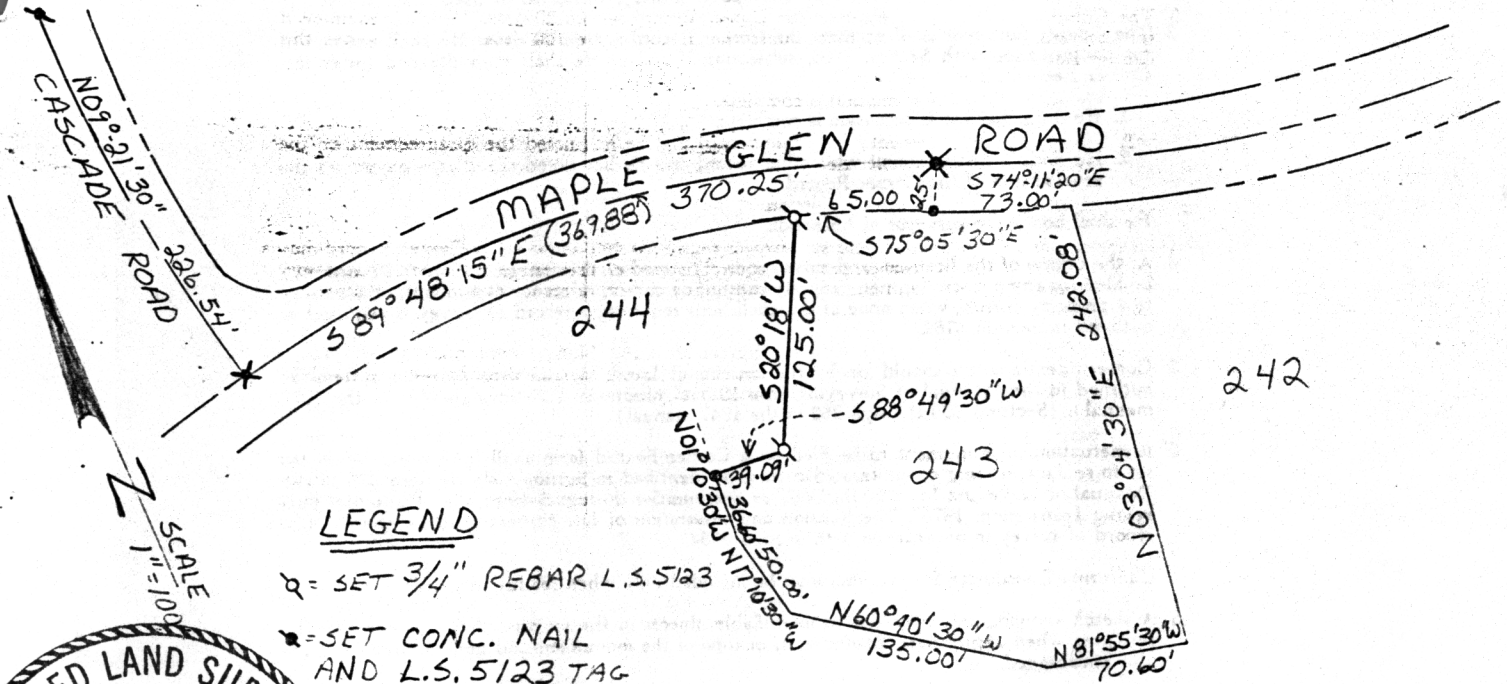
SEE SKETCH

PHYSICAL DESCRIPTION OF MONUMENTS REBUILT OR PERPETUATED

SEE SKETCH

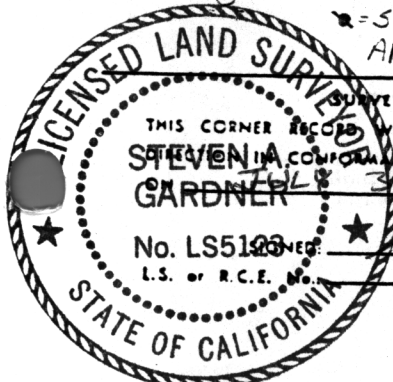
CALIFORNIA COORDINATE SYSTEM ORDER: FIRST SECOND THIRD
 STATIONS USED: NGS (USC & GS) STATE COUNTY OTHER STATION _____ STATION _____
 ZONE _____ ELEVATION _____ NORTHINGS (N) _____ EASTINGS (E) _____

SKETCH: (Include reference tie or witness points, remarks and topo of area)



LEGEND

- Q = SET 3/4" REBAR L.S. 5123
- R = SET CONC. NAIL AND L.S. 5123 TAG



SURVEYOR'S CERTIFICATE
 THIS CORNER RECORD WAS PREPARED BY ME OR UNDER MY SUPERVISION IN COMPLIANCE WITH THE LAND SURVEYORS ACT
 BY Steven A. Gardner 1990
 No. LS5123
 L.S. or R.C.E.

COUNTY SURVEYOR'S CERTIFICATE
 THE CORNER RECORD WAS RECEIVED AUG 10 1990
 AND EXAMINED AND FILED AUG 16 1990
 BY [Signature]
 TITLE: Surveying Engineering Job
 DOCUMENT No. 293

STATEMENT ON BACK OF SHEET YES NO