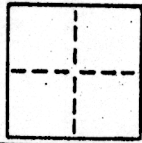


CORNER RECORD

COUNTY OF SACRAMENTO T. 7N R. 5E M.D.B MERIDIAN CALIFORNI
 CORNER TYPE: GOVT. CORNER MEANDER RANCHO CONTROL OTHER
 CORNER IDENTIFICATION — DATE OF VISIT _____ 19____



SOUTHGATE EAST

CORNER — LEFT AS FOUND FOUND AND TAGGED REESTABLISHED OBLITERATED CORNER REBUILT

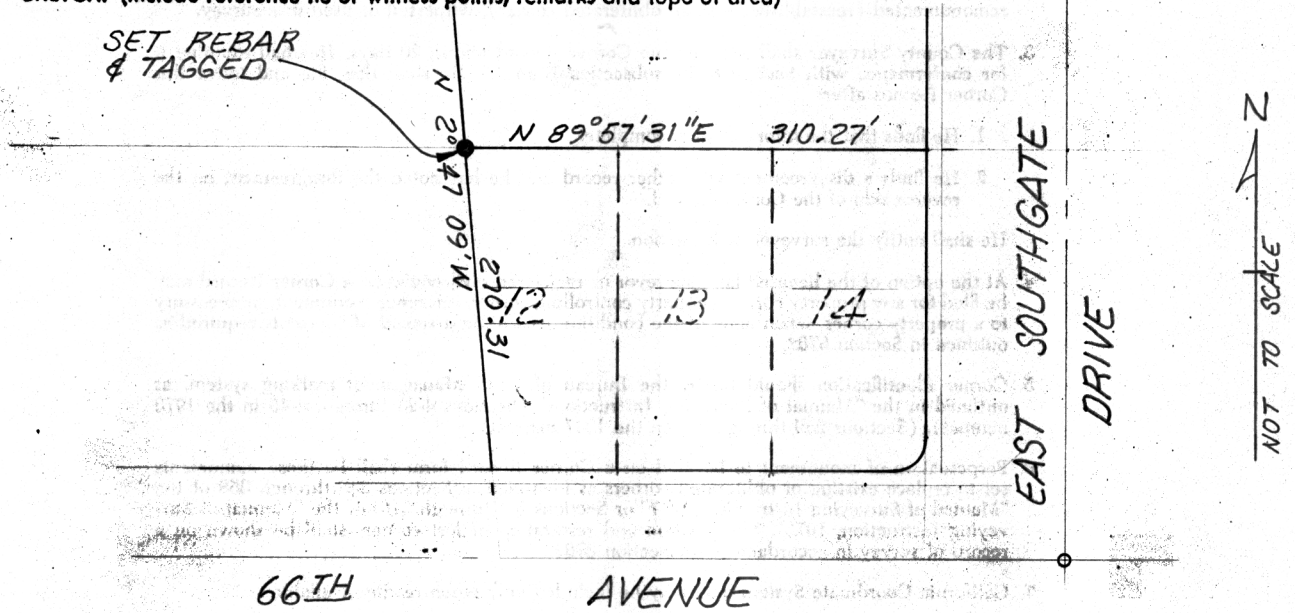
PHYSICAL DESCRIPTION OF CORNER FOUND, EVIDENCE AND METHOD USED TO IDENTIFY OR REESTABLISH

PHYSICAL DESCRIPTION OF MONUMENTS REBUILT OR PERPETUATED

5/8" REBAR TAGGED P.C.E. 22993 @ THE NORTHWEST CORNER OF LOT 12 OF SOUTHGATE EAST FILED IN BOOK 74 OF MAPS, MAP NO. 3 SACRAMENTO COUNTY RECORDS.

CALIFORNIA COORDINATE SYSTEM ORDER: FIRST SECOND THIRD
 STATIONS USED: NGS (USC & GS) STATE COUNTY OTHER STATION _____ STATION _____
 ZONE _____ ELEVATION _____ NORTHINGS (Y) _____ EASTINGS (X) _____

SKETCH: (Include reference tie or witness points, remarks and topo of area)



SURVEYOR'S CERTIFICATE
 THIS CORNER RECORD WAS PREPARED BY ME OR UNDER MY DIRECTION IN CONFORMANCE WITH THE LAND SURVEYORS ACT ON Feb. 12 1985.
 SIGNED: [Signature]
 L.S. or R.C.E. No.: 22993 (P.C.E.)

SEAL

COUNTY SURVEYOR'S CERTIFICATE
 THE CORNER RECORD WAS RECEIVED 4-1 1985 AND EXAMINED AND FILED 4-1 1985.
 BY: [Signature]
 TITLE: Sup Eng Lab
 DOCUMENT No. 28

STATEMENT ON BACK OF SHEET YES NO