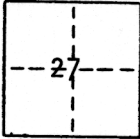


CORNER RECORD

COUNTY OF Sacramento T. 8 N. R. 5 E M.D.M. MERIDIAN CALIFORNIA

CORNER TYPE: GOV'T. CORNER MEANDER RANCHO CONTROL OTHER Property Corner
 CORNER IDENTIFICATION - DATE OF VISIT September 14 19 89



AVONDALE SUB #2 BLOCK 9 LOTS 12 & 13

CORNER - LEFT AS FOUND FOUND AND TAGGED REESTABLISHED OBLITERATED CORNER REBUILT

PHYSICAL DESCRIPTION OF CORNER FOUND: EVIDENCE AND METHOD USED TO IDENTIFY OR REESTABLISH

Found 5/8" rebar, no tag, at the Southwest corner of Lot 13 ^{Block 9} and the Southeast corner of Lot 12 of "Avondale Subdivision Unit No. 2" (19 maps 35) as shown on 39 O.S. 14.

PHYSICAL DESCRIPTION OF MONUMENTS REBUILT OR PERPETUATED

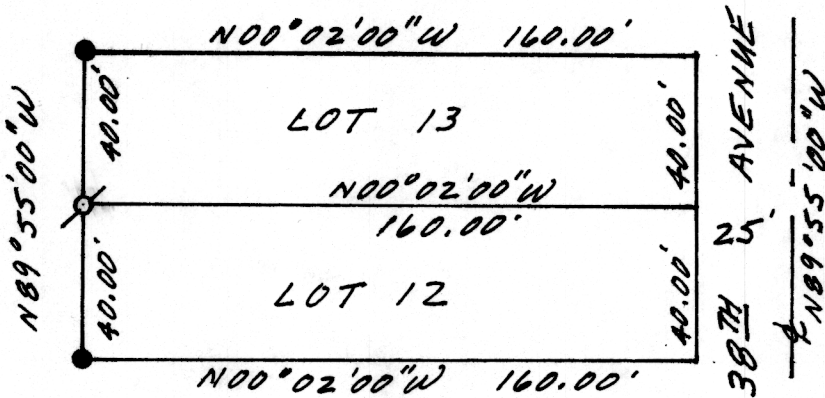
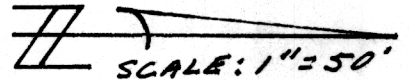
Set monument as shown

CALIFORNIA COORDINATE SYSTEM ORDER: FIRST SECOND THIRD

STATIONS USED: NGS (USC & GS) STATE COUNTY OTHER STATION _____ STATION _____

ZONE _____ ELEVATION _____ NORTHINGS (Y) _____ EASTINGS (X) _____

SKETCH: (Include reference tie or witness points, remarks and topo of area)



LEGEND

- FOUND 5/8" REBAR, NO TAG, PER 39 O.S. 14
- ⊕ SET 3/4" REBAR TAGGED L.S. 5109

890106

SURVEYOR'S CERTIFICATE

THIS CORNER RECORD WAS PREPARED BY ME OR UNDER MY DIRECTION IN CONFORMANCE WITH THE LAND SURVEYING ACT ON September 15 19 89

SIGNED: *Gerald D. Dishinger*

L.S. or R.C.E. No.: L.S. 5109

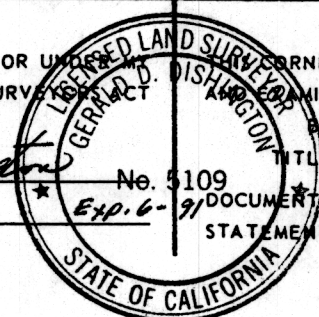
COUNTY SURVEYOR'S CERTIFICATE

THIS CORNER RECORD WAS RECEIVED Sep. 18 19 89 EXAMINED AND FILED Sep 18 19 89

TITLE: Supervising Engineering Tech

DOCUMENT No. 259

STATEMENT ON BACK OF SHEET



SEAL

YES NO