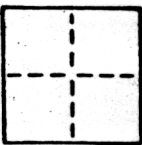


CORNER RECORD

COUNTY OF SACRAMENTO T. _____ S. _____ MERIDIAN CALIFORNIA
 CORNER TYPE: GOVT. CORNER MEANDER RANCHO CONTROL OTHER
 CORNER IDENTIFICATION — DATE OF VISIT AUG. 7 1989



LOT 365 OF ARDEN OAKS VISTA #2, 34BM23

CORNER — LEFT AS FOUND FOUND AND TAGGED REESTABLISHED OBLITERATED CORNER REBUILT

PHYSICAL DESCRIPTION OF CORNER FOUND; EVIDENCE AND METHOD USED TO IDENTIFY OR REESTABLISH

SEE SKETCH

PHYSICAL DESCRIPTION OF MONUMENTS REBUILT OR PERPETUATED

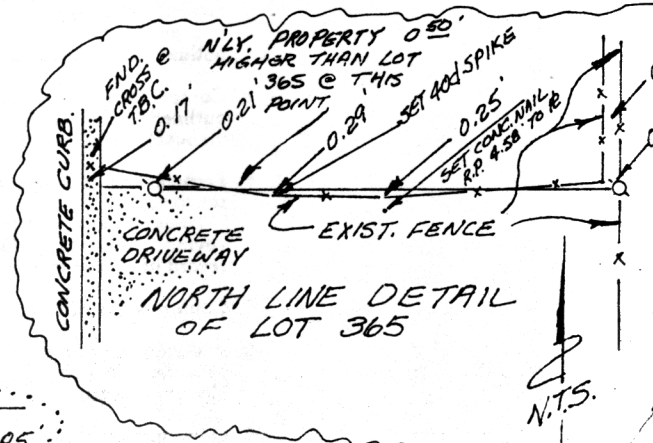
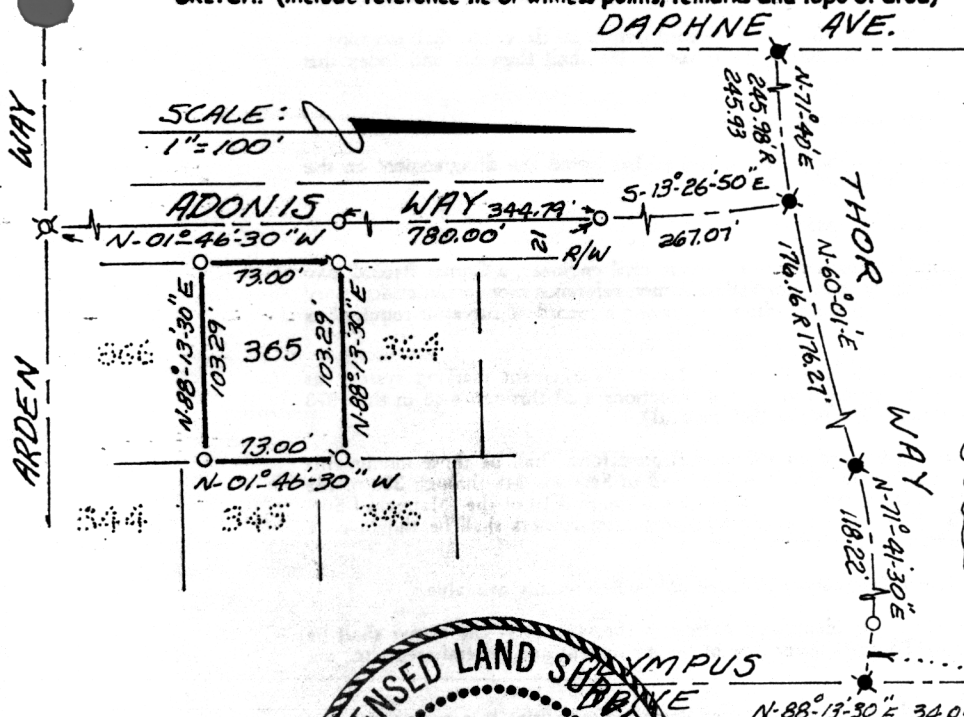
SEE SKETCH

CALIFORNIA COORDINATE SYSTEM ORDER: FIRST SECOND THIRD
 STATIONS USED: NGS (USC & GS) STATE COUNTY OTHER STATION _____ STATION _____
 ZONE _____ ELEVATION _____ NORTHINGS (N) _____ EASTINGS (E) _____

SKETCH: (Include reference tie or witness points, remarks and topo of area)
DAPHNE AVE.

LEGEND

- * = FND. 3/4" IRON PIPE, NO TAG
- ⊗ = FND. NAIL & SHINER
- = DIMENSION POINT
- ⊙ = SET 3/4" REBAR, LS 5123



THIS CORNER RECORD WAS PREPARED BY ME OR UNDER MY DIRECTION IN CONFORMANCE WITH THE LAND SURVEYORS ACT ON AUG 10 1989 NO. LS5123

SIGNED Steven A. Gardner STATE OF CALIFORNIA

SEAL

COUNTY SURVEYOR'S CERTIFICATE

THE CORNER RECORD WAS RECEIVED Sept 1 1989 AND EXAMINED AND FILED Sept 6 1989

BY Gave Parker TITLE Supervising Engineering Gal

DOCUMENT No 255

STATEMENT ON BACK OF SHEET

YES NO