

Corner Record

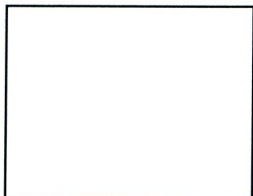
Document Number 2549

City of _____

County of Sacramento, California

Brief Legal Description

The centerline intersection of Eastern Avenue and Las Cruces Way, as shown on the "Plat of Wright & Kimbrough Arden Park Vista Unit No. 12", filed in the Office of the Recorder of the County of Sacramento in Book 32 of Maps, at Page 5.



Corner Type

Coordinates

(Optional)

Government Corner ()	Control ()	N. _____
Meander ()	Property (x)	E. _____
Rancho ()	Other ()	Zone _____ Datum _____
Date of Survey <u>3/18/2009</u>		Elev. _____

Corner- Left as Found () Found and Tagged () Established () Reestablished (x) Rebuilt ()

Identification and Type of Corner Found, Evidence used to Identify or Procedure used to Establish or Reestablish the corner:

Found spike and washer monument at the centerline intersection of Eastern Avenue and Las Cruces Way, west of Eastern Avenue. The "Plat of Wright & Kimbrough Arden Park Vista Unit No. 12", calls for a dimension point. Set 3/4" Sacramento County brass tags in concrete for reference points. Refer to Sacramento County field notes E-233, page RP-6, 3/18/2009.

A Description of the Physical Condition of the Monument as Found and as Set or Reset:

Replaced original monument on 10/8/2010 with 2 1/2" brass disc, stamped "Sacramento Co. Municipal Services, 2010", in monument well after original monument was destroyed as a result of construction.

Surveyor's Statement

This Corner Record was prepared by me or under my direction in conformance with the Land Surveyor's Act on 4/5/2011



Signed [Signature]
Larry S. Savio

LS # 7965

County Surveyor's Statement

This Corner Record was received 4/11, 2011 and examined and filed 4/12, 2011

Signed [Signature]
William M Carmack - LS #5887

Title: Principal Land Surveyor



County Surveyor's Comments:

AC OVERLAY PROJECT

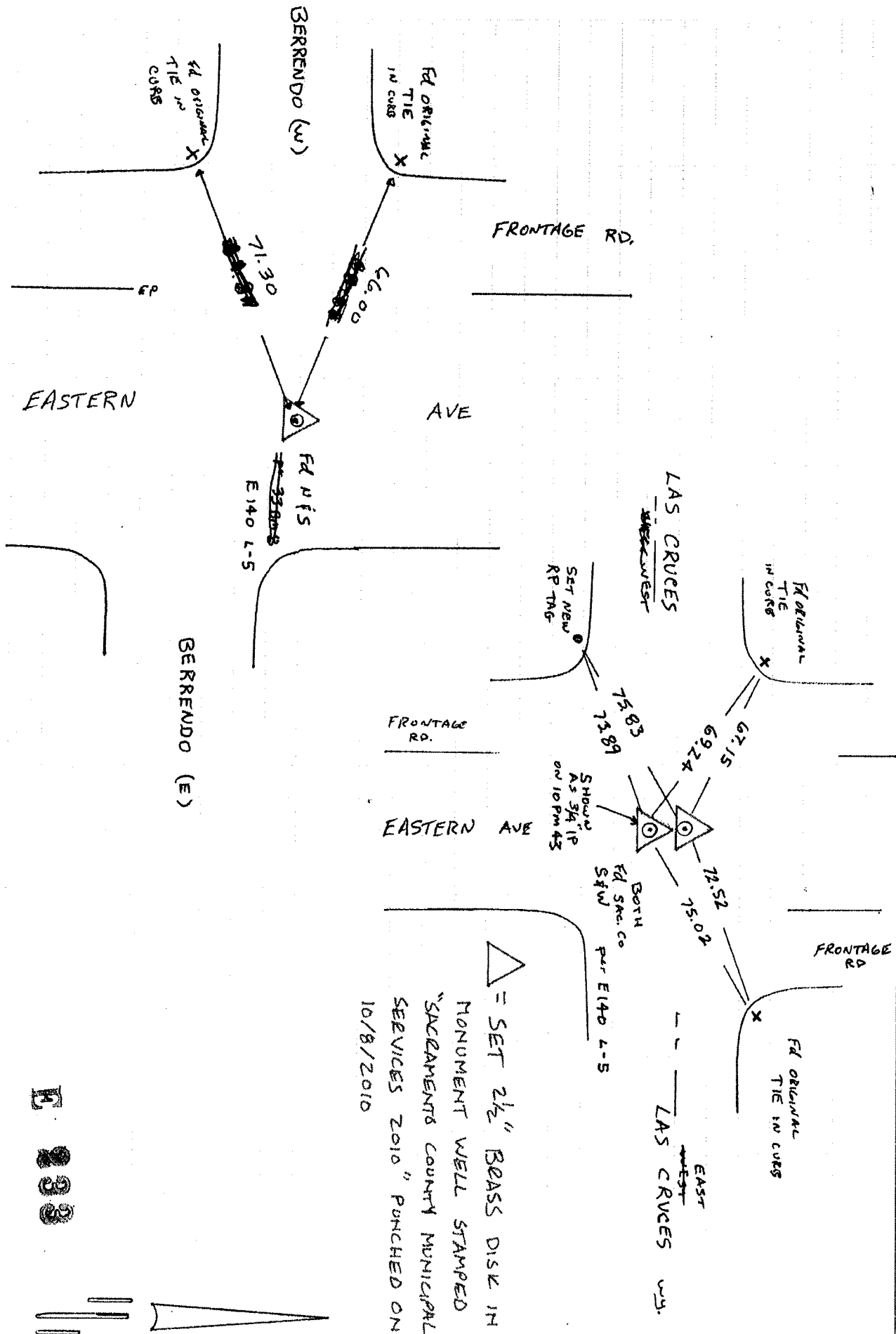
Crew: DOUG BEAN

Date: 3-18-09

Project: EASTERN AVE - F.O.B. to ADDEN way

SHAWN MURRAY

Page: RP-6



E 233