

CORNER RECORD

254

COUNTY OF SACRAMENTO

CORNER TYPE: GOVT. CORNER MEANDER BANCRO CONTROL OTHER MERIDIAN CALIFORNIA

CORNER IDENTIFICATION - DATE OF VISIT 19



1 PM 19 PARCEL "B"

CORNER - LEFT AS FOUND FOUND AND TAGGED REESTABLISHED OBLITERATED CORNER RESULT

PHYSICAL DESCRIPTION OF CORNER FOUND, EVIDENCE AND METHOD USED TO IDENTIFY OR REESTABLISH

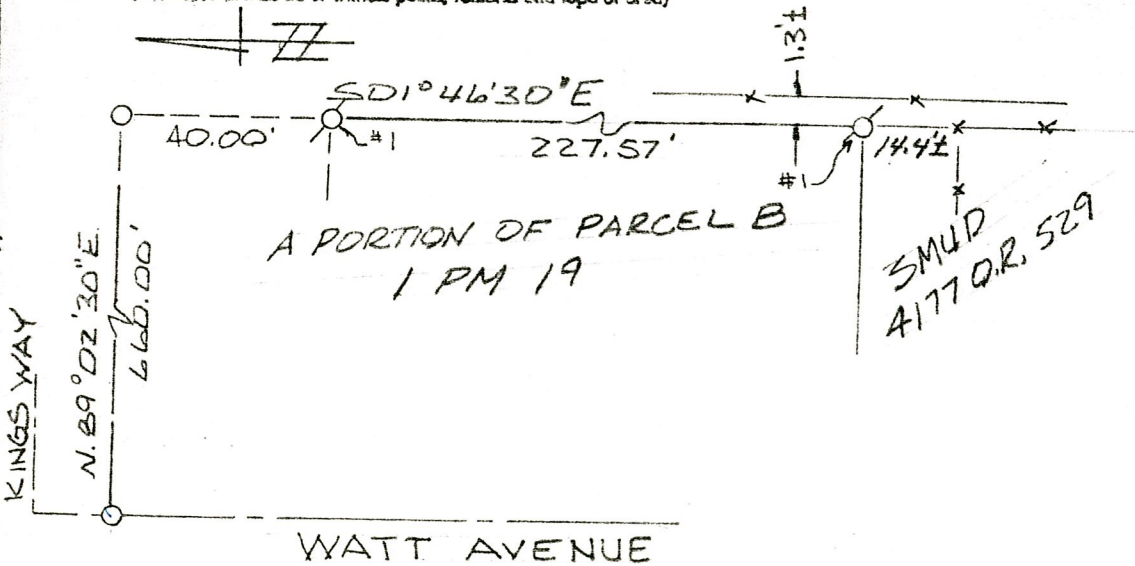
PHYSICAL DESCRIPTION OF MONUMENTS RESULT OR PERPETUATED

NO. 1 = SET NO. 4 REBAR TAGGED LHT-LS 4900

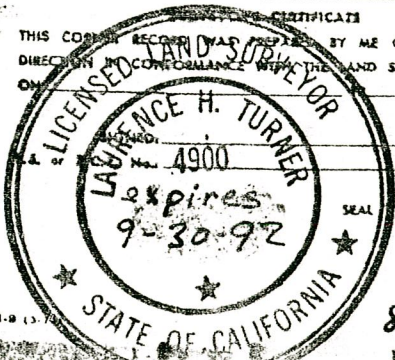
CALIFORNIA COORDINATE SYSTEM ORDER: FIRST SECOND THIRD
STATIONS USED: MGS (USC & GS) STATE COUNTY OTHER STATION _____
ZONE _____ ELEVATION _____ NORTHINGS (N) _____ EASTINGS (E) _____

(Fold)

SKETCH: (Include references to or witness points, remarks and topo of area)



CERTIFICATE
THIS CORNER RECORD WAS RECEIVED BY ME OR UNDER MY DIRECTION IN CONFORMANCE WITH THE LAND SURVEYORS ACT ON



COUNTY SURVEYOR'S CERTIFICATE
THE CORNER RECORD WAS RECEIVED AUG 24, 1989
AND EXAMINED AND FILED AUG 29, 19 89

BY [Signature]
TITLE: Supervising Engineer

DOCUMENT NO. 254

STATEMENT ON BACK OF SHEET

YES NO

8-24-89

Lawrence H. Turner