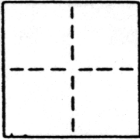


**CORNER RECORD**

COUNTY OF Sacramento T. \_\_\_\_\_ R. \_\_\_\_\_ MERIDIAN CALIFORNIA

CORNER TYPE: GOV'T. CORNER  MEANDER  RANCHO  CONTROL  OTHER  Property Corner  
 CORNER IDENTIFICATION - DATE OF VISIT July 12 89 19\_\_



City of Sacramento

CORNER - LEFT AS FOUND  FOUND AND TAGGED  REESTABLISHED OBLITERATED CORNER  REBUILT

PHYSICAL DESCRIPTION OF CORNER FOUND: EVIDENCE AND METHOD USED TO IDENTIFY OR REESTABLISH \_\_\_\_\_

Found monuments in the centerline of Detroit Blvd. as shown in sketch, no record.

PHYSICAL DESCRIPTION OF MONUMENTS REBUILT OR PERPETUATED \_\_\_\_\_

Set 3/4" Rebar, Tagged L.S. 5109 at the N.E. & N.W. corners of Lot 3 of Southgate Unit No. 1 (56 Maps 16).

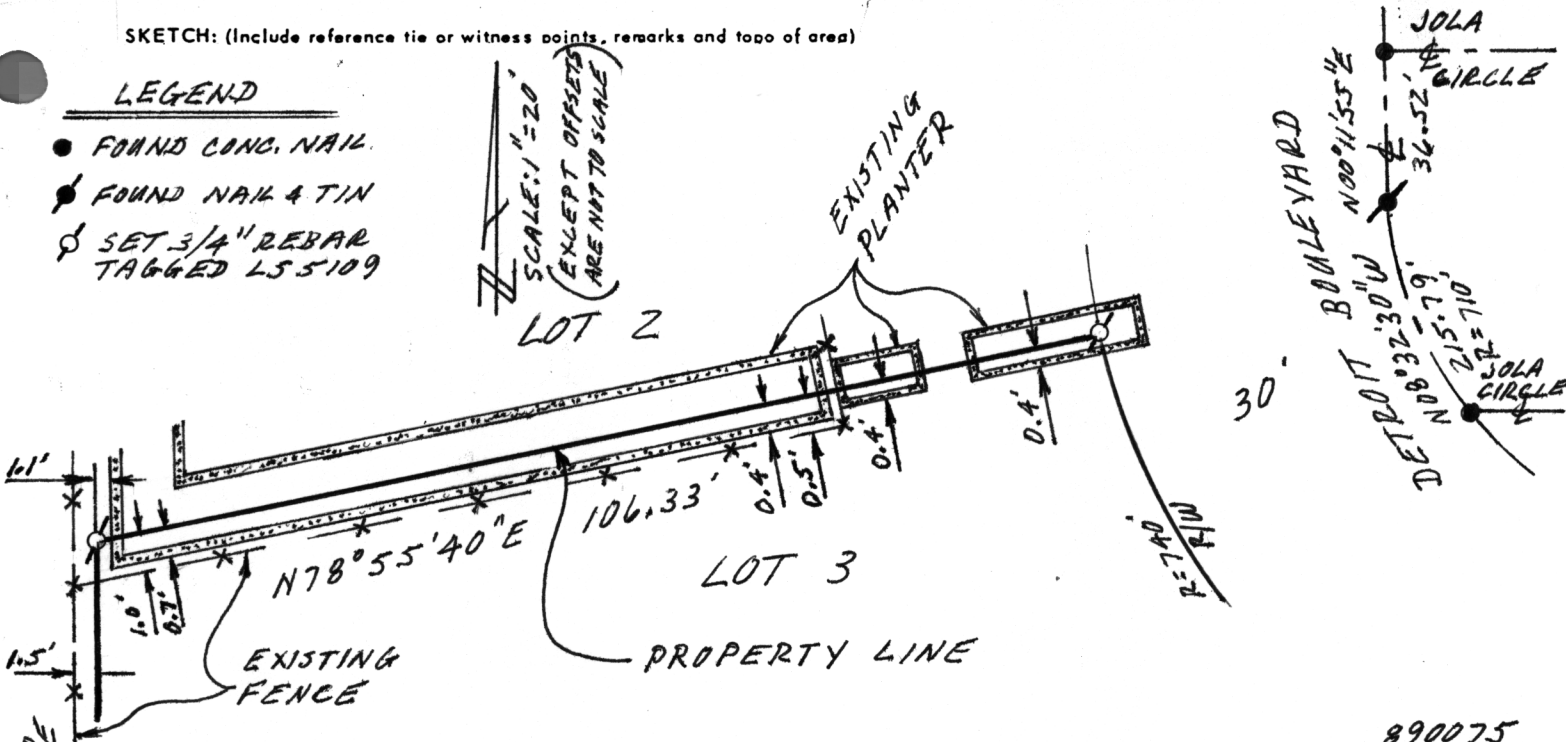
CALIFORNIA COORDINATE SYSTEM ORDER: FIRST  SECOND  THIRD   
 STATIONS USED: NGS (USC & GS)  STATE  COUNTY  OTHER  STATION \_\_\_\_\_ STATION \_\_\_\_\_  
 ZONE \_\_\_\_\_ ELEVATION \_\_\_\_\_ NORTHINGS (Y) \_\_\_\_\_ EASTINGS (X) \_\_\_\_\_

SKETCH: (Include reference tie or witness points, remarks and topo of area)

**LEGEND**

- FOUND CONC. NAIL
- ⊙ FOUND NAIL & TIN
- ⊕ SET 3/4" REBAR TAGGED LS 5109

SCALE: 1" = 20'  
 EXCEPT OFFSETS ARE NOT TO SCALE



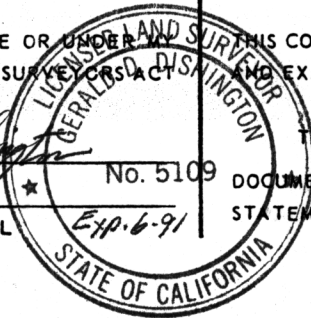
890075

**SURVEYOR'S CERTIFICATE**

THIS CORNER RECORD WAS PREPARED BY ME OR UNDER MY SUPERVISION AND EXAMINED AND FILED IN CONFORMANCE WITH THE LAND SURVEYORS ACT ON July 19 1989  
 SIGNED: Gerald D. Dishington  
 L.S. or R.C.E. No.: L.S. 5109

**COUNTY SURVEYOR'S CERTIFICATE**

THIS CORNER RECORD WAS RECEIVED July 24, 1989  
 AND EXAMINED AND FILED July 28, 1989  
 BY: [Signature]  
 TITLE: Supervising Engineering Geol  
 DOCUMENT No. 250



SEAL

STATEMENT ON BACK OF SHEET

YES  NO