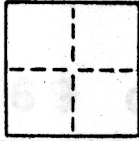


CORNER RECORD

COUNTY OF SACRAMENTO T. 7N R. 5E MDBM MERIDIAN CALIFOR
CORNER TYPE: GOV'T. CORNER MEANDER RANCHO CONTROL OTHER
CORNER IDENTIFICATION - DATE OF VISIT MARCH 1985



LOT 569 LINDALE #5

CORNER - LEFT AS FOUND FOUND AND TAGGED REESTABLISHED OBLITERATED CORNER REBUILT

PHYSICAL DESCRIPTION OF CORNER FOUND; EVIDENCE AND METHOD USED TO IDENTIFY OR REESTABLISH

PRO RATION

PHYSICAL DESCRIPTION OF MONUMENTS REBUILT OR PERPETUATED

SEE MAP

CALIFORNIA COORDINATE SYSTEM ORDER: FIRST SECOND THIRD
STATIONS USED: NGS (USC & GS) STATE COUNTY OTHER STATION _____ STATION _____
ZONE _____ ELEVATION _____ NORTHINGS (Y) _____ EASTINGS (X) _____

SKETCH: (Include reference tie or witness points, remarks and topo of area)

SEE MAP

SURVEYOR'S CERTIFICATE

THIS CORNER RECORD WAS PREPARED BY ME OR UNDER MY DIRECTION IN CONFORMANCE WITH THE LAND SURVEYORS ACT ON MARCH 1985

SIGNED: Robert D. Bergsten

L.S. or R.C.E. No.: 5078

SEAL

COUNTY SURVEYOR'S CERTIFICATE

THE CORNER RECORD WAS RECEIVED 3-25 1985 AND EXAMINED AND FILED 3-28 1985

BY: [Signature]

TITLE: [Signature]

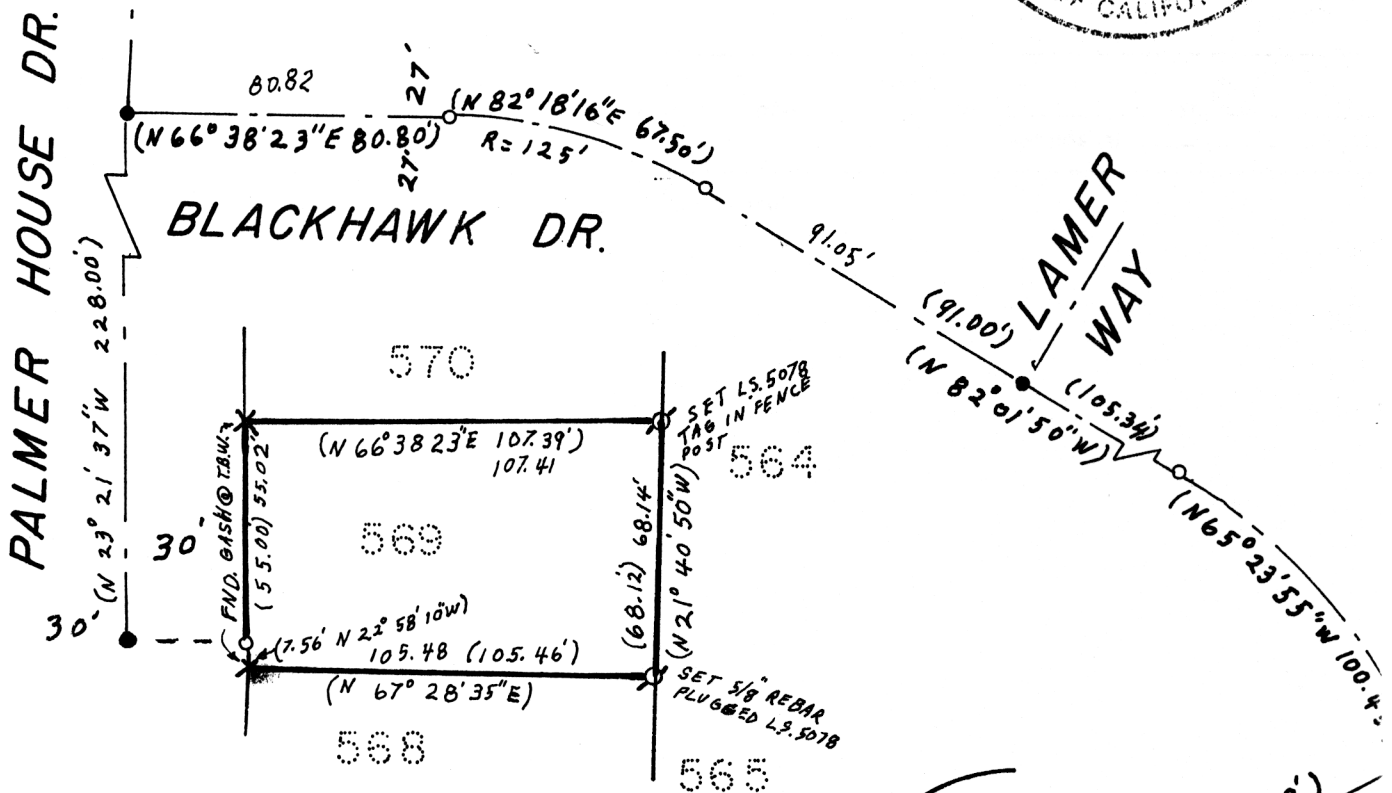
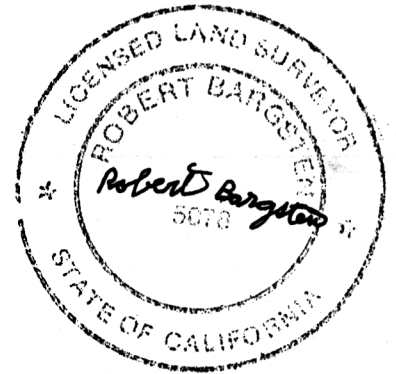
DOCUMENT No. 25

STATEMENT ON BACK OF SHEET

YES NO

LOT 569 of LINDALE UNIT NO. 5 (67 B.M.19.)

R. B. SURVEYS MARCH 1985



F.N.D. 3/4" I. P.

(N 41° 14' E 115.28')
115.30
CHATEAU COURT