

Corner Record

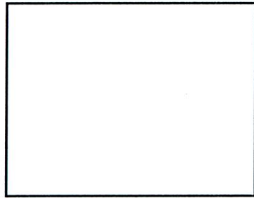
Document Number 2499

City of _____

County of Sacramento, California

Brief Legal Description

The centerline of Galbrath Dr, 106' +/- N.E. of McDermott Dr at the PC, as shown on "Plat of Kirkland Unit 2" filed in the Office of the Recorder of the County of Sacramento in Book 160 of maps, at Page 5.



Corner Type

Coordinates

(Optional)

Government Corner	()	Control	()	N.	_____
Meander	()	Property	(x)	E.	_____
Rancho	()	Other	()	Zone	_____ Datum _____
Date of Survey	<u>3/18/2009</u>	Elev.	_____		

Corner- Left as Found () Found and Tagged () Established () Reestablished (x) Rebuilt ()

Identification and Type of Corner Found, Evidence used to Identify or Procedure used to Establish or Reestablish the corner:

Found 3/4" iron pipe at the centerline of Galbrath Dr, 106' +/- N.E. of McDermott Dr at the PC, the "Plat of Kirkland Unit 2" call for a 3/4" Iron Pipe tagged RCE 28,158. Set 3/4" Sacramento County brass tags in concrete for reference points. Refer to Sacramento County field notes G-130, page RP-7, 3/18/2009.

A Description of the Physical Condition of the Monument as Found and as Set or Reset:

Replaced original monument on 10/15/2010 with 2 1/2" brass disc, stamped "Sacramento Co. Municipal Services, 2010", in monument well after original monument was destroyed as a result of construction.

Surveyor's Statement

This Corner Record was prepared by me or under my direction in conformance with the Land Surveyor's Act on 3/31/2011

Signed *Larry S. Savio*
Larry S. Savio

LS # 7965



County Surveyor's Statement

This Corner Record was received 4/11, ²⁰¹¹/~~2010~~ and examined and filed 4/12, ²⁰¹¹/~~2010~~

Signed *William M Carmack*
William M Carmack - LS #5887

Title: Principal Land Surveyor

County Surveyor's Comments:



COUNTY OF SACRAMENTO

MUNICIPAL SERVICES AGENCY

Crew: B. Bokkaman Date: 3-16-09

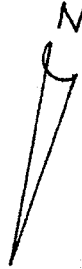
Project: GALBRATH DR (MONUMENT DR TO VALEGA DR)

Page: Pp 7 of 8

R. HAYES

AC OVERLAY PROJECT

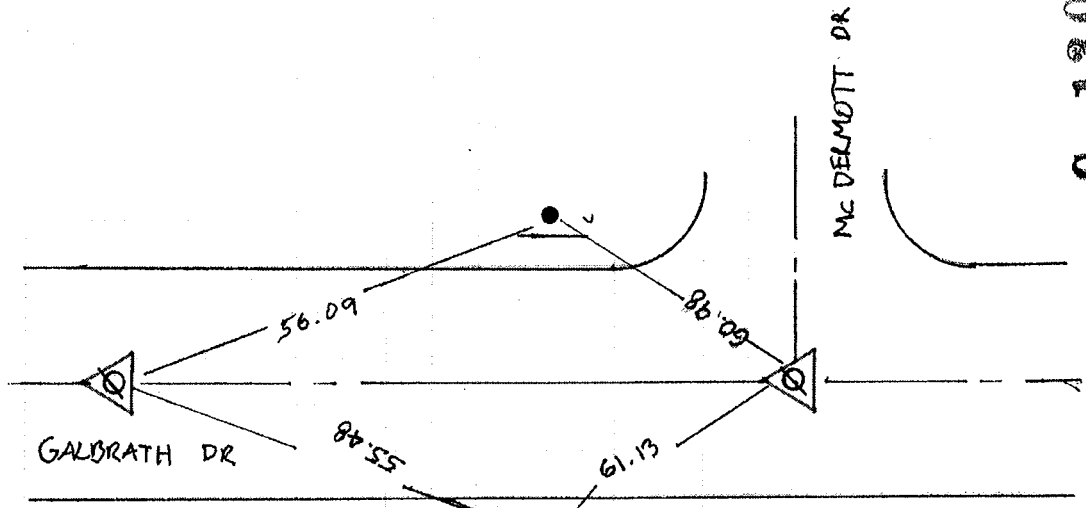
END 3/4" I.P. PER 160 BM 5-A (B.C.)



SET SAC. CO. RP TAG @ TOP BACK VERT CURB (NORTH SIDE)
SET SAC. CO. RP TAG @ TOP BACK ROLL CURB (SOUTH SIDE)

END 3/4" I.P. PER 160 BM 5-A (INTX)

△ = SET 2 1/2" BRASS DISK IN MONUMENT WELL
STAMPED "SACRAMENTO COUNTY MUNICIPAL
SERVICES 2010," PUNCHED ON 10/15/2010



G-130