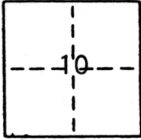


CORNER RECORD

COUNTY OF Sacramento Rancho Del Paso XXXXXXXX CALIFORNIA

CORNER TYPE: GOV'T. CORNER MEANDER RANCHO CONTROL OTHER Property Corner
 CORNER IDENTIFICATION - DATE OF VISIT June 21 19 89



CORNER - LEFT AS FOUND FOUND AND TAGGED REESTABLISHED OBLITERATED CORNER REBUILT

PHYSICAL DESCRIPTION OF CORNER FOUND: EVIDENCE AND METHOD USED TO IDENTIFY OR REESTABLISH _____

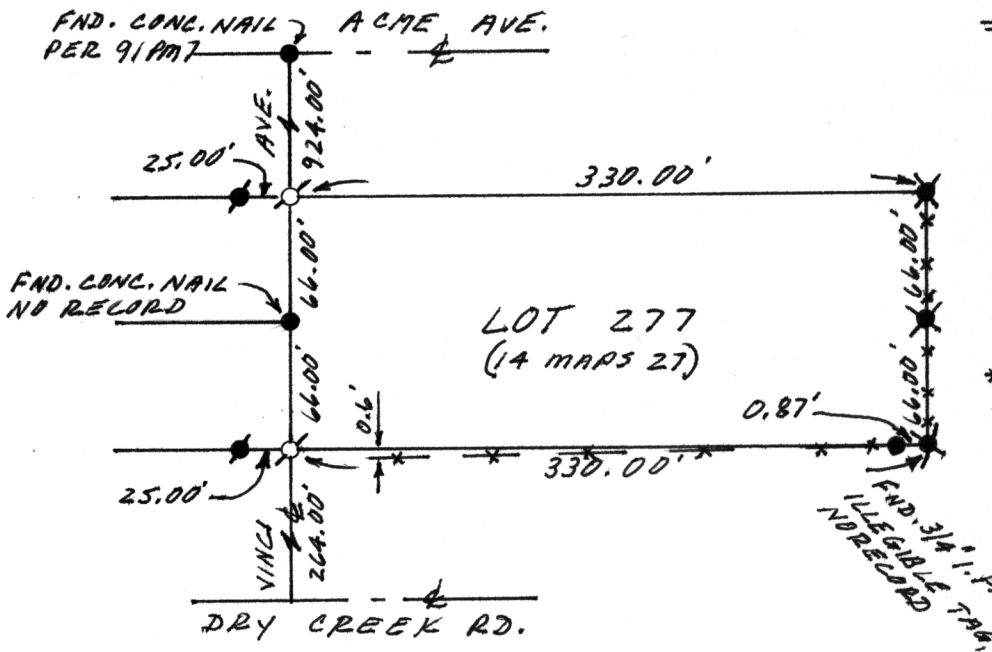
Found monuments as noted in sketch.

PHYSICAL DESCRIPTION OF MONUMENTS REBUILT OR PERPETUATED _____

Set 3/4" Rebar, tagged L.S. 5109, at the S.E. & S.W. corners of Lot 277 of Acme Acres (14 Maps 27).

CALIFORNIA COORDINATE SYSTEM ORDER: FIRST SECOND THIRD
 STATIONS USED: NGS (USC & GS) STATE COUNTY OTHER STATION _____ STATION _____
 ZONE _____ ELEVATION _____ NORTHINGS (Y) _____ EASTINGS (X) _____

SKETCH: (Include reference tie or witness points, remarks and topo of area)



LEGEND

- FOUND AS NOTED
- ✱ FOUND 1/2" REBAR NO TAG, NO RECORD
- FOUND 3/4" REBAR TAGGED LS 5123 PER 91 PM 7
- ♂ SET 3/4" REBAR TAGGED LS 5109
- ✱✱ EXISTING FENCE.

SCALE: 1" = 100'

890062

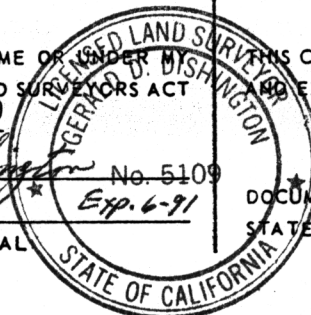
SURVEYOR'S CERTIFICATE

THIS CORNER RECORD WAS PREPARED BY ME OR UNDER MY DIRECTION IN CONFORMANCE WITH THE LAND SURVEYORS ACT ON July 24 19 89

SIGNED: Donald D. Washington No. 5109 Exp. 6-91

L.S. or R.C.E. No.: L.S. 5109

SEAL



COUNTY SURVEYOR'S CERTIFICATE

THIS CORNER RECORD WAS RECEIVED July 24 19 89 EXAMINED AND FILED July 2 19 89

BY: Charles Parker

TITLE: Surveying Engineering Tech

DOCUMENT No. 249

STATEMENT ON BACK OF SHEET

YES NO