

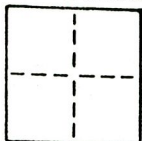
CORNER RECORD

248

COUNTY OF SACRAMENTO T. 9 N R. 6 E MOUNT DIABLO MERIDIAN CALIFORNIA

CORNER TYPE: GOV'T. CORNER [ ] MEANDER [ ] RANCHO [ ] CONTROL [ ] OTHER [x]

CORNER IDENTIFICATION - DATE OF VISIT JUNE 13, 19 89



SET 4 CORNERS OF PARCEL 1, BOOK 8 OF PARCEL MAPS AT PAGE 50, SACRAMENTO COUNTY RECORDS.

CORNER - LEFT AS FOUND [ ] FOUND AND TAGGED [ ] REESTABLISHED OBLITERATED CORNER [ ] REBUILT [ ]

PHYSICAL DESCRIPTION OF CORNER FOUND; EVIDENCE AND METHOD USED TO IDENTIFY OR REESTABLISH

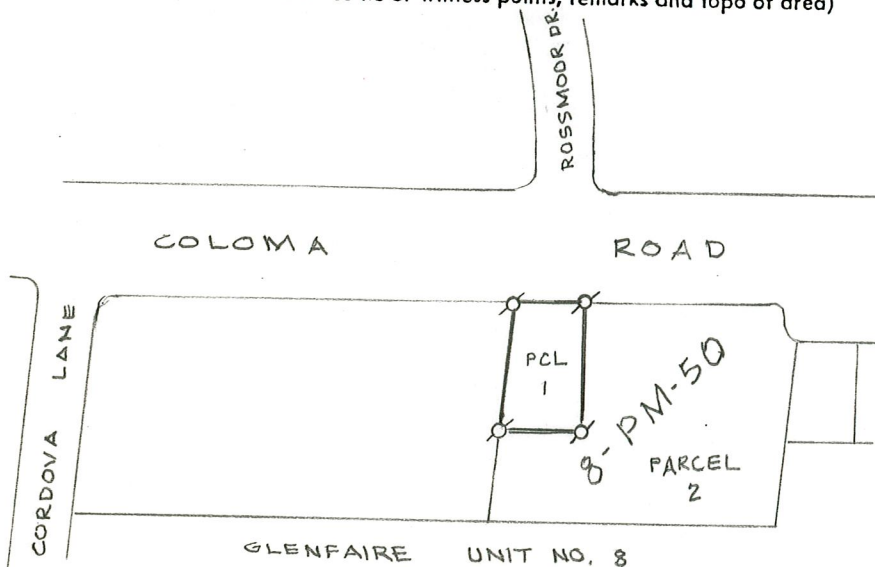
CORNER LOCATIONS WERE DETERMINED FROM MAPS OF RECORD AND SURVEY MONUMENTS FOUND.

PHYSICAL DESCRIPTION OF MONUMENTS REBUILT OR PERPETUATED

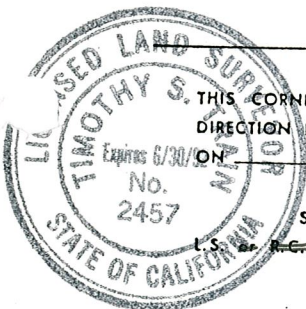
MONUMENTS SET ARE 1/4" O.D. IRON PIPES TAGGED LS 2457.

CALIFORNIA COORDINATE SYSTEM ORDER: FIRST [ ] SECOND [ ] THIRD [ ] STATIONS USED: NGS (USC & GS) [ ] STATE [ ] COUNTY [ ] OTHER [ ] ZONE \_\_\_\_\_ ELEVATION \_\_\_\_\_ NORTHINGS (Y) \_\_\_\_\_ EASTINGS (X) \_\_\_\_\_

SKETCH: (Include reference tie or witness points, remarks and topo of area)



Ø 1/4" O.D. IRON PIPE TAGGED LS 2457 SET.



SURVEYOR'S CERTIFICATE THIS CORNER RECORD WAS PREPARED BY ME OR UNDER MY DIRECTION IN CONFORMANCE WITH THE LAND SURVEYORS ACT Expires 6/30/00 No. 2457 JUNE 15 1989. SIGNED: Timothy S. Dahn L.S. No. R.C.P. No.: 2457

SEAL

COUNTY SURVEYOR'S CERTIFICATE

THE CORNER RECORD WAS RECEIVED 7-20 19 89 AND EXAMINED AND FILED 7-21 19 89

BY: [Signature] TITLE: [Signature]

DOCUMENT No. 248

STATEMENT ON BACK OF SHEET

YES [ ] NO [x]