

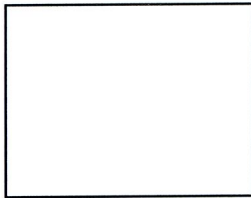
# Corner Record

Document Number 2479

City of \_\_\_\_\_ County of Sacramento, California

### Brief Legal Description

A point on the centerline of Macready Avenue N89°29'53"E 2.0' along said centerline from the intersection of the centerlines of Macready Avenue and Bleckely Street as shown in Book 59 of Surveys, at Page 27, filed in the office of the Recorder of the of the County of Sacramento, State of California.



### Corner Type

### Coordinates (Optional)

Government Corner  Control  N. \_\_\_\_\_  
 Meander  Property  E. \_\_\_\_\_  
 Rancho  Other  Zone \_\_\_\_\_ Datum \_\_\_\_\_  
 Date of Survey 03-14-2007 Elev. \_\_\_\_\_

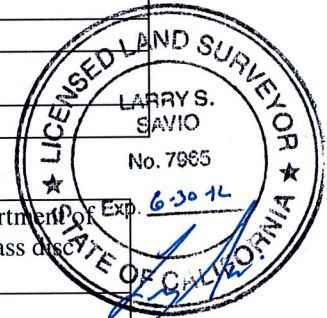
Corner- Left as Found  Found and Tagged  Established  Reestablished  Rebuilt

### Identification and Type of Corner Found, Evidence used to Identify or Procedure used to Establish or Reestablish the corner:

Found 4" brass disc stamped "U.S.E.D." in monument well with a 5" diameter pipe cap at a point on the centerline of Macready Avenue N89°29'53"E 2.0' along said centerline from the intersection of the centerlines of Macready Avenue and Bleckely Street. This is shown as an iron pin in a monument well (4" diameter pipe w/ lid) per Book 59 of Surveys, at Page 27, filed in the office of the Recorder of the County of Sacramento, State of California. Verified position of 4" disc by measurements from points shown on attached sketch filed in the Sacramento County survey department per M313; Page R.P.13, 04/05/2010.

### A Description of the Physical Condition of the Monument as Found and as Set or Reset:

Replaced 4" brass disc on 03/22/2007 with a 2" brass disc Stamped "Sacramento County Department of Exp. Public Works" set in concrete, in a monument well and in the same position as the found 4" brass disc after the 4" brass disc was destroyed as a result of construction.



### Surveyor's Statement

This Corner Record was prepared by me or under my direction in conformance with the Professional Land Surveyor's Act on 04/05/2010

Signed Ryan L. Ming LS 8409



### County Surveyor's Statement

This Corner Record was received 4/5 3/19 2011, 2010 and examined and filed 3/25, 2010 2011

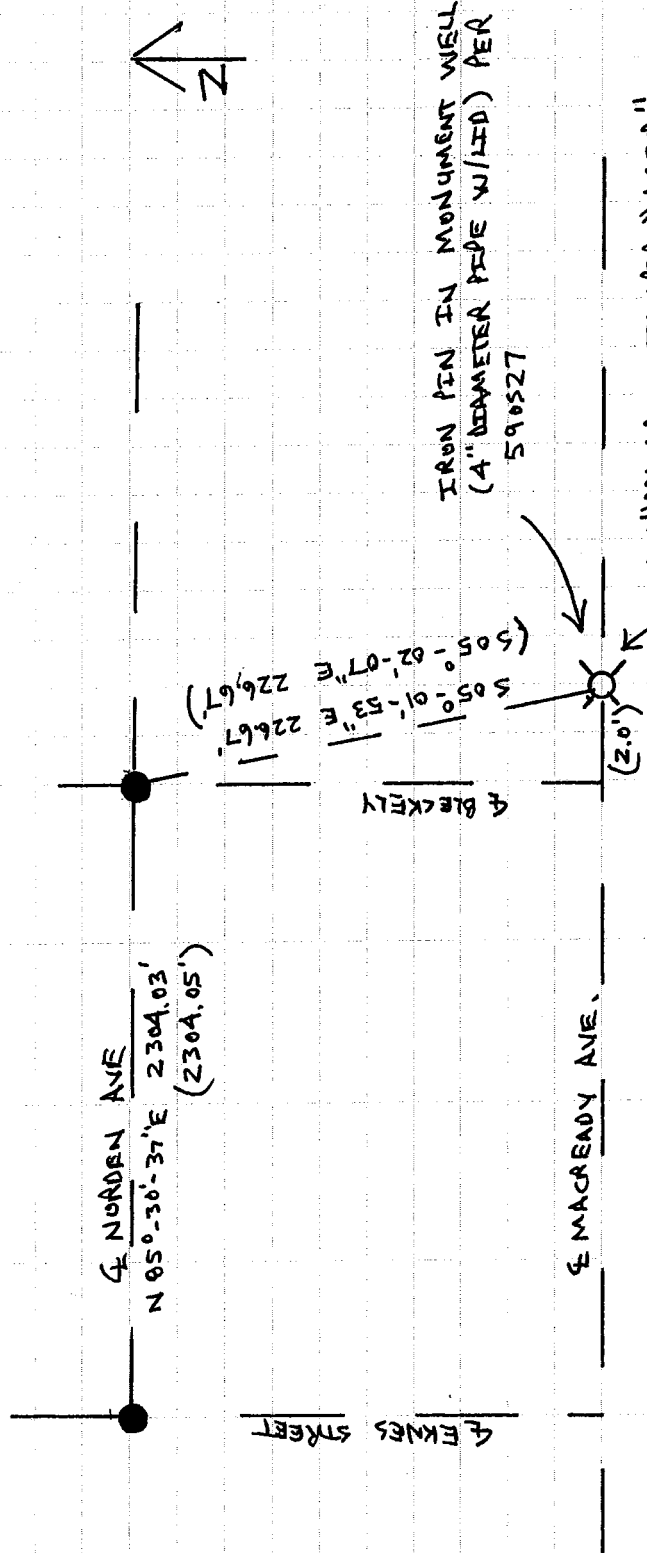
Signed Larry Savio Title : Associate Land Surveyor

LEGEND

● - FND 2" BRASS DISC STAMPED "SAC. CO. DEPT. PUB. WORKS, L.S. 4166" SET IN CONCRETE IN MONUMENT WELL PER 590527

⊗ - SET 2" BRASS DISC STAMPED "SAC. CO. DEP. PUBLIC WORKS" SET IN CONCRETE IN MONUMENT WELL

( ) - RECORD DATA PER 590527



FND 4" BRASS DISC STAMPED "U.S.R.D." IN MONUMENT WELL WITH 5" DIAMETER PIPE CAP (11-7-05) REPLACED WITH 2" BRASS DISC STAMPED "SAC. CO. DEP. PUBLIC WORKS" IN MONUMENT WELL (3-22-07)