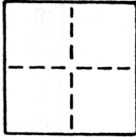


CORNER RECORD

COUNTY OF SACRAMENTO T. _____ R. _____ MERIDIAN _____ CALIFORNIA

CORNER TYPE: GOVT. CORNER MEANDER RANCHO CONTROL OTHER

CORNER IDENTIFICATION — DATE OF VISIT JUNE 1989



SET ALL CORNERS OF LOT 27 & 27A OF THE AMENDED MAP OF VINELAND.

CORNER — LEFT AS FOUND FOUND AND TAGGED REESTABLISHED OBLITERATED CORNER REBUILT

PHYSICAL DESCRIPTION OF CORNER FOUND; EVIDENCE AND METHOD USED TO IDENTIFY OR REESTABLISH

(SEE BACK OF THIS SHEET)

PHYSICAL DESCRIPTION OF MONUMENTS REBUILT OR PERPETUATED

(SEE BACK OF THIS SHEET)

CALIFORNIA COORDINATE SYSTEM ORDER: FIRST SECOND THIRD
STATIONS USED: NGS (USC & GS) STATE COUNTY OTHER STATION _____ STATION _____
ZONE _____ ELEVATION _____ NORTHINGS (Y) _____ EASTINGS (X) _____

SKETCH: (Include reference tie or witness points, remarks and topo of area)

(SEE BACK OF THIS SHEET)



SURVEYOR'S CERTIFICATE

THIS CORNER RECORD WAS PREPARED BY ME OR UNDER MY DIRECTION IN CONFORMANCE WITH THE LAND SURVEYORS ACT

SIGNED: Ronald L. Hoffman
C.E. No.: L.S. 5671

SEAL

COUNTY SURVEYOR'S CERTIFICATE

THE CORNER RECORD WAS RECEIVED 7-20 1989 AND EXAMINED AND FILED 7-29 1989

BY: [Signature]
TITLE: Supervising Engineer

DOCUMENT No. 246

STATEMENT ON BACK OF SHEET

YES NO

S89° 59' 49" W 330.13'
 (S89° 59' 49" W 330.13')

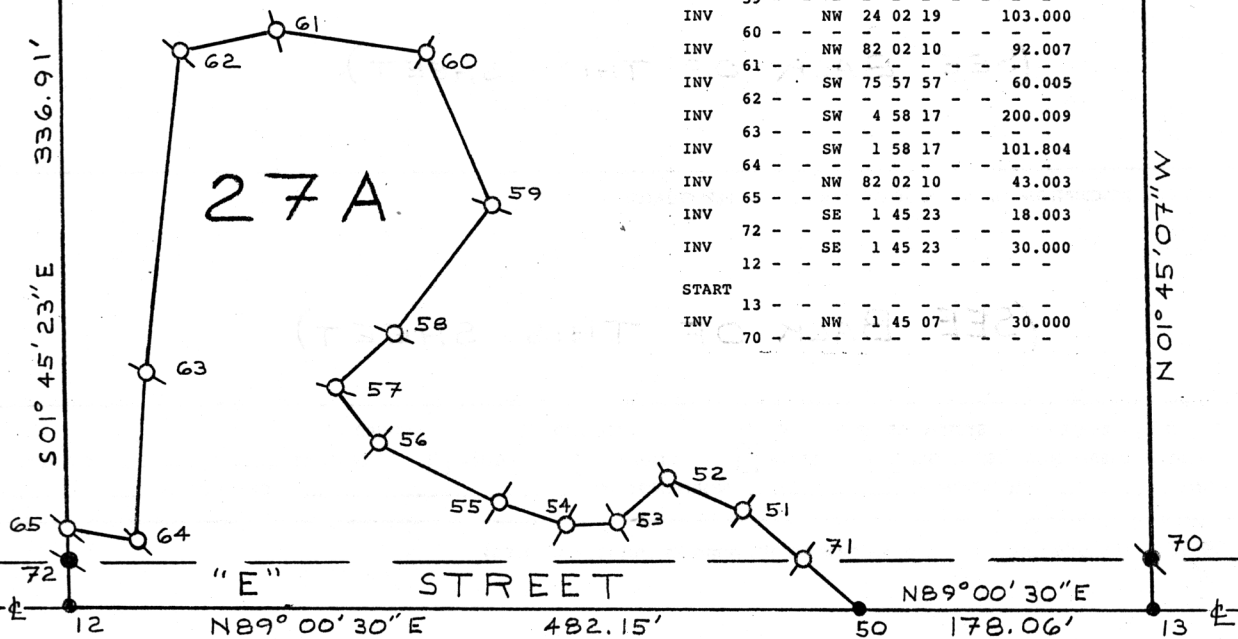
S88° 59' 49" W 330.13'
 (S88° 59' 49" W 330.13')

275.14'
 275.14'
 S01° 45' 23" E
 (S01° 46' 06" E)

336.91'
 S01° 45' 23" E

630.18'

N01° 45' 07" W



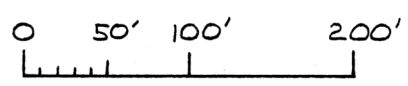
POINT	QUAD	BEARING	DISTANCE
START			
INV 50	- -	- - - -	- - - -
INV 71	- -	NW 51 02 17	46.713
INV 51	- -	NW 51 02 17	45.291
INV 52	- -	NW 68 02 13	51.003
INV 53	- -	SW 48 58 06	40.004
INV 54	- -	SW 85 57 54	32.003
INV 55	- -	NW 74 32 12	43.003
INV 56	- -	NW 63 32 14	81.005
INV 57	- -	NW 39 02 18	44.001
INV 58	- -	NE 47 57 54	47.996
INV 59	- -	NE 35 57 50	98.992
INV 60	- -	NW 24 02 19	103.000
INV 61	- -	NW 82 02 10	92.007
INV 62	- -	SW 75 57 57	60.005
INV 63	- -	SW 4 58 17	200.009
INV 64	- -	SW 1 58 17	101.804
INV 65	- -	NW 82 02 10	43.003
INV 72	- -	SE 1 45 23	18.003
INV 12	- -	SE 1 45 23	30.000
START			
INV 13	- -	- - - -	- - - -
INV 70	- -	NW 1 45 07	30.000

27

27A

LEGEND

- : SET 5/8" REBAR, TAGGED L.S. 5671.
- : SET 1/4" O.D. IRON PIPE, TAGGED L.S. 5671.
- ⊗: FND 1/2" REBAR, TAGGED L.S. 2878.
- ⊗: FND 1" IRON PIPE, TAGGED L.S. 2457.
- : DIMENSION PT. ONLY, NOTHING FND. OR SET.
- (): RECORD DATA PER 59/P.M./35.



SURVEY OF
 LOT 27 AND 27A OF THE
 AMENDED MAP OF VINELAND
 (BK. 15 OF MAPS, NO. 46)
 JUNE 1989
 COUNTY OF SACRAMENTO, CA.



TIMOTHY S. TRAIN LAND SURVEYOR 2604 21 st STREET SACRAMENTO, CA. 95818 PHONE: 451-7793	Dr. <u>RLH</u> Date <u>6-16-89</u>
	Ch. _____ Date _____
	Field Bk. <u>237 PG 15</u>
	W.O. No. <u>8906-01</u>
	File No. _____