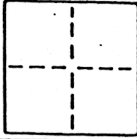


CORNER RECORD

COUNTY OF SACRAMENTO T. _____ R. _____ MERIDIAN _____ CALIFORNIA

CORNER TYPE: GOVT. CORNER MEANDER RANCHO CONTROL OTHER

CORNER IDENTIFICATION — DATE OF VISIT JAN 11, 1989



SET CORNERS BETWEEN LOTS 45 AND 46, PLAT OF SWANSTON PALMS UNIT No. 5

CORNER — LEFT AS FOUND FOUND AND TAGGED REESTABLISHED OBLITERATED CORNER REBUILT

PHYSICAL DESCRIPTION OF CORNER FOUND; EVIDENCE AND METHOD USED TO IDENTIFY OR REESTABLISH

CORNERS ESTABLISHED PER OFFICIAL PLAT OF SWANSTON PALMS UNIT No. 5, FOUND MONUMENTS.

PHYSICAL DESCRIPTION OF MONUMENTS REBUILT OR PERPETUATED

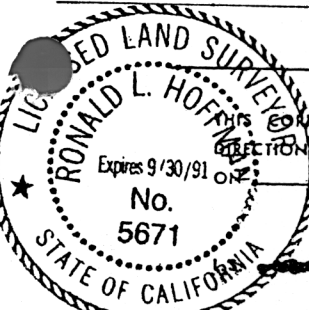
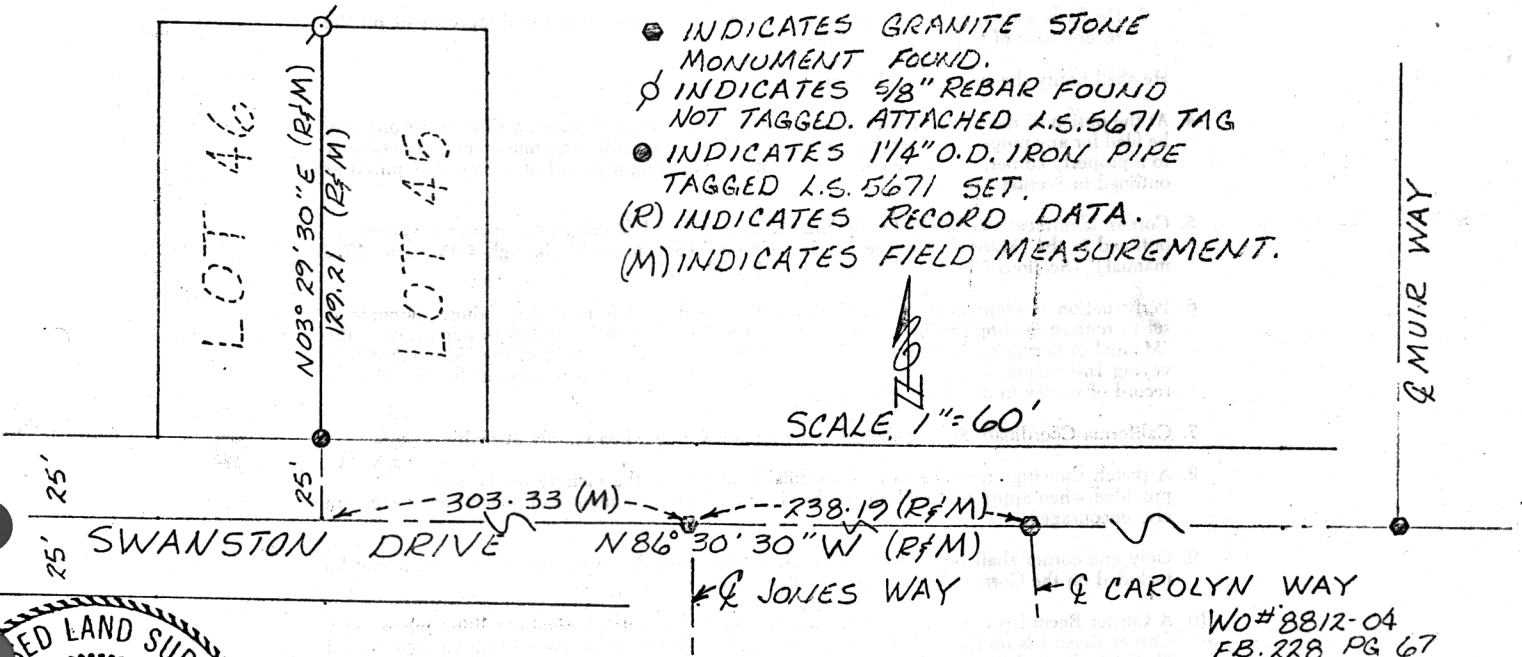
SEE SKETCH BELOW

CALIFORNIA COORDINATE SYSTEM ORDER: FIRST SECOND THIRD
 STATIONS USED: NGS (USC & GS) STATE COUNTY OTHER STATION _____ STATION _____
 ZONE _____ ELEVATION _____ NORTHINGS (Y) _____ EASTINGS (X) _____

SKETCH: (Include reference tie or witness points; remarks and topo of area)

LEGEND

- INDICATES GRANITE STONE MONUMENT FOUND.
- ⊙ INDICATES 5/8" REBAR FOUND NOT TAGGED. ATTACHED I.S. 5671 TAG
- ⊙ INDICATES 1 1/4" O.D. IRON PIPE TAGGED I.S. 5671 SET.
- (R) INDICATES RECORD DATA.
- (M) INDICATES FIELD MEASUREMENT.



SURVEYOR'S CERTIFICATE

THIS CORNER RECORD WAS PREPARED BY ME OR UNDER MY DIRECTION IN CONFORMANCE WITH THE LAND SURVEYORS ACT

JAN. 19 89

SIGNED: Ronald L. Hoffman
 No. 5671

COUNTY SURVEYOR'S CERTIFICATE

THE CORNER RECORD WAS RECEIVED AND EXAMINED AND FILED

BY: [Signature]
 TITLE: Supervising Engineer

DOCUMENT No. 245

STATEMENT ON BACK OF SHEET 10