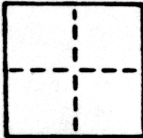


CORNER RECORD

COUNTY OF SACRAMENTO T. _____ R. _____ MERIDIAN _____ CALIFORNIA
 CORNER TYPE: GOVT. CORNER MEANDER RANCHO CONTROL OTHER
 CORNER IDENTIFICATION — DATE OF VISIT JUNE 21 1989



LOT 242 OF ARDEN OAKS #5, 29 BM16

CORNER — LEFT AS FOUND POUND AND TAGGED REESTABLISHED OBLITERATED CORNER REBUILT

PHYSICAL DESCRIPTION OF CORNER FOUND; EVIDENCE AND METHOD USED TO IDENTIFY OR REESTABLISH

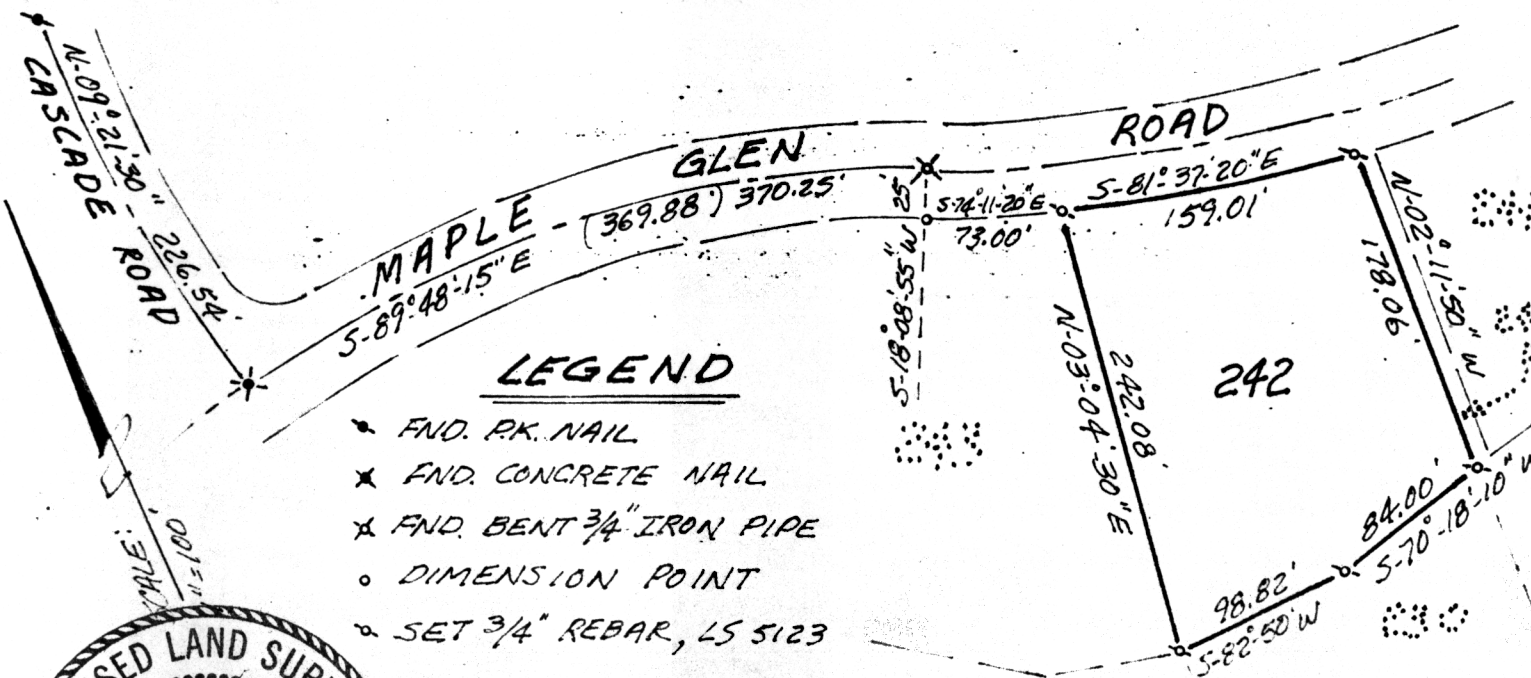
SEE SKETCH

PHYSICAL DESCRIPTION OF MONUMENTS REBUILT OR PERPETUATED

SEE SKETCH

CALIFORNIA COORDINATE SYSTEM ORDER: FIRST SECOND THIRD
 STATIONS USED: NGS (USC & GS) STATE COUNTY OTHER STATION _____ STATION _____
 ZONE _____ ELEVATION _____ NORTHINGS (Y) _____ EASTINGS (X) _____

SKETCH: (Include reference tie or witness points, remarks and topo of area)



SURVEYOR'S CERTIFICATE
 THIS RECORD WAS PREPARED BY ME OR UNDER MY
 PERSONAL SUPERVISION AND IN ACCORDANCE WITH THE LAND SURVEYORS ACT
 OF CALIFORNIA, CHAPTER 5, SECTION 5123, AS AMENDED.
 DATE OF RECORDING 7-7-89
 SURVEYOR'S SIGNATURE: Steven A. Gardner
 LICENSE NO. LS 5123

COUNTY SURVEYOR'S CERTIFICATE
 THE CORNER RECORD WAS RECEIVED 7-7-1989
 AND EXAMINED AND FILED DIP 1989
 BY: Paul Parker
 TITLE: Engineering
 DOCUMENT No. 240
 STATEMENT ON BACK OF SHEET