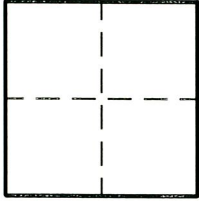


CORNER RECORD

Document Number 2379
County of SACRAMENTO, California

City of ELK GROVE

Brief Legal Description _____



CORNER TYPE

Government Corner Control
Meander Property
Rancho Other
Date of Survey May 11, 2010

CORNER TYPE (Optional)

N. _____
E. _____
Zone _____ Datum _____
Elev. _____

Corner - Left as found Found and tagged Established Reestablished Rebuilt

Identification and type of corner found: Evidence used to identify or procedure used to establish or reestablish the corner.
FOUND 3/4" IRON PIPE IN CENTERLINE OF ELK GROVE-FLORIN ROAD PER 148 RM 15, S.C.R.,
VERIFIED ON JULY 27, 2010.

A description of the physical condition of the monument as found and as set or reset. _____

SURVEYOR'S STATEMENT

This Corner Record was prepared by me or under my direction in conformance with
the Land Surveyor's Act on October 27, 2010.

Signed _____ L.S. or R.C.E. Number 5260

COUNTY SURVEYOR'S STATEMENT

This Corner Record was received 11/12 2010.

and filed 11/17 2010.

Signed [Signature] Title ASSOC. C.S.



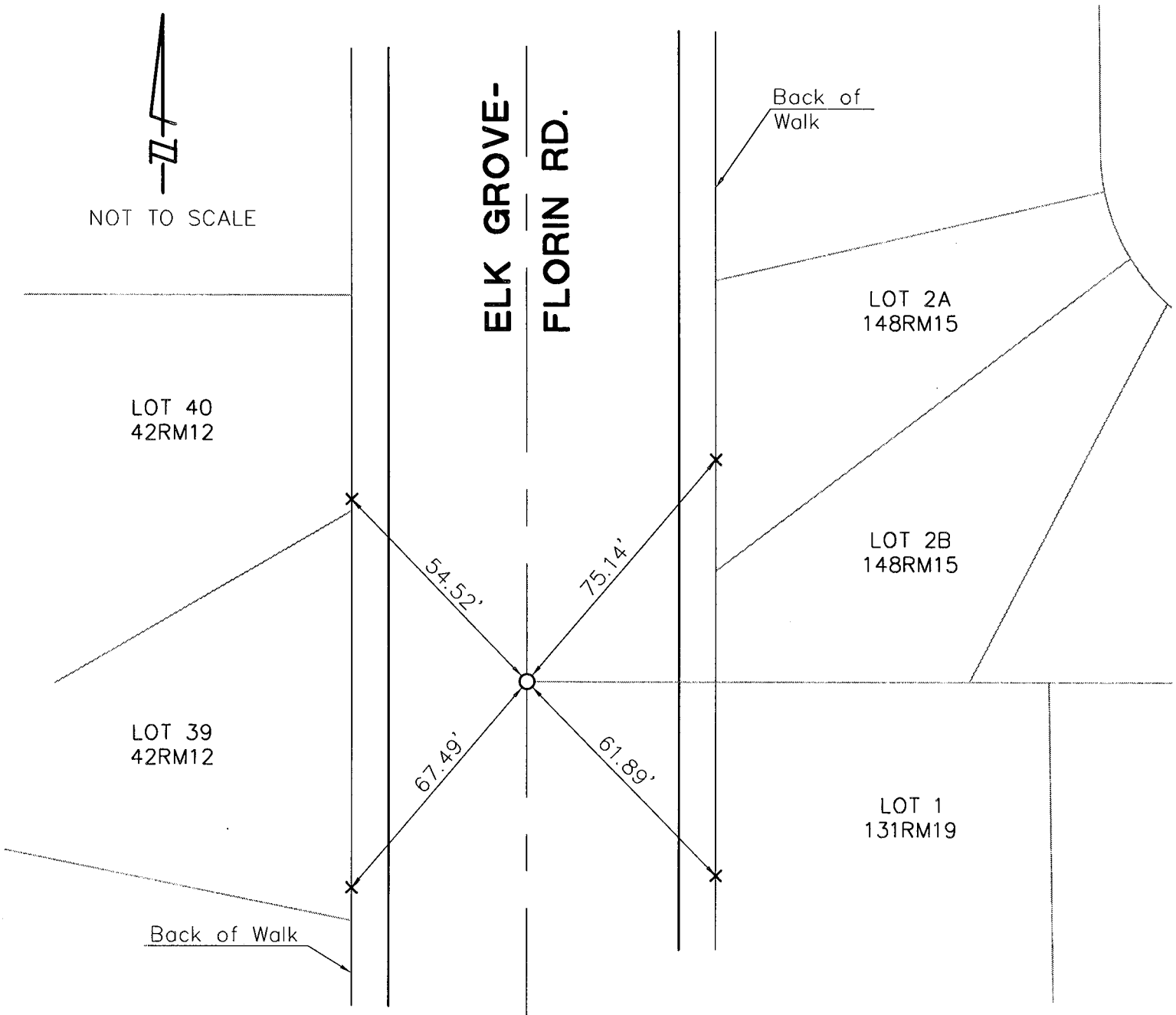
County Surveyor's Comment _____



LEGEND

Document Number _____

- × SET LEAD & TAG STAMPED PSOMAS LS 5260 AT BACK OF WALK
- FOUND 3/4" IRON PIPE, PER 148 RM 15, S.C.R.



The following procedure was followed for setting opposing leads and tags as reference points for the centerline monument: A total station was set over one lead and tag, and the surveyor sighted through a sight set over the center of the centerline monument to set the opposing lead and tag on a point at the back of walk. Thus, opposing leads and tags and the centerline monument lie on a common line. Then, the distances from the instrument to the centerline monument and to the opposing lead and tag were measured and documented as shown hereon.